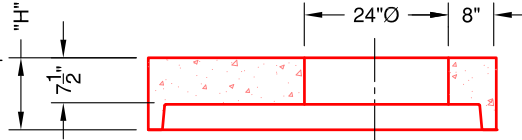




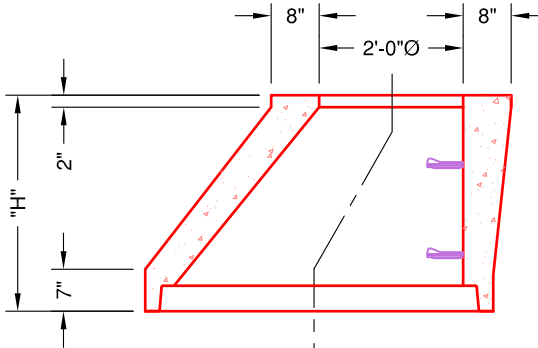
**4' TOP SLAB W/G**

"H" Wt.  
12" - 1760#



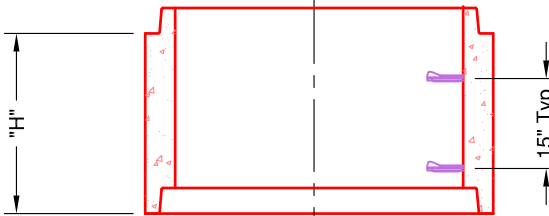
**ECCENTRIC CONICAL**

"H" Wt.  
24" - 1640#  
30" - 2040#  
32" - 2200#  
36" - 2560#



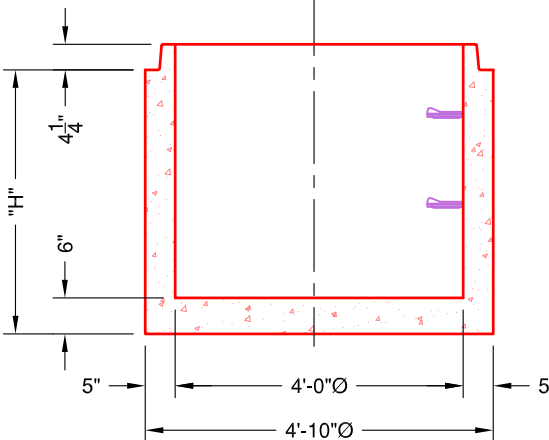
**4' DIA. BARREL**

"H" Wt.  
15" - 1083#  
30" - 2168#  
45" - 3251#  
60" - 4336#



**4' DIA. BASE**

"H" Wt.  
23" - 2730#  
30" - 3236#  
32" - 3380#  
34" - 3524#  
44" - 4238#



**SECTIONAL VIEW**

**SPECIFICATIONS:**

1. Concrete minimum compression strength:  
F'c=5,000 PSI @ 28 days.
2. Reinforcing steel: ASTM A615, Fy=60,000 PSI

ITEMS ARE SUBJECT TO CHANGE WITHOUT NOTICE.