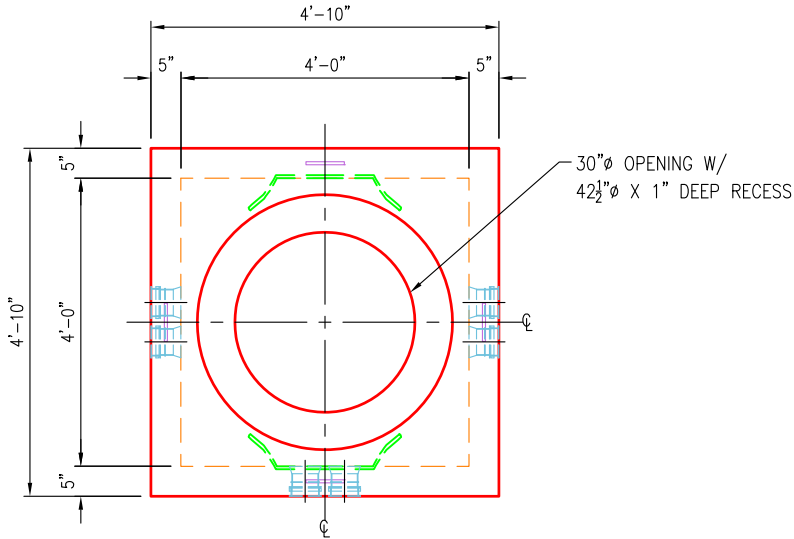
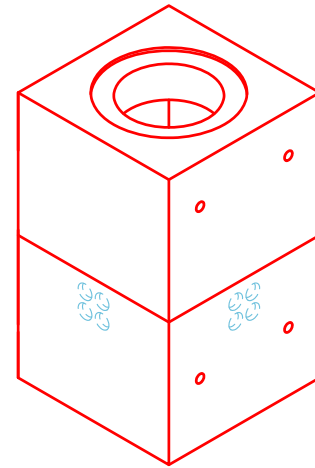


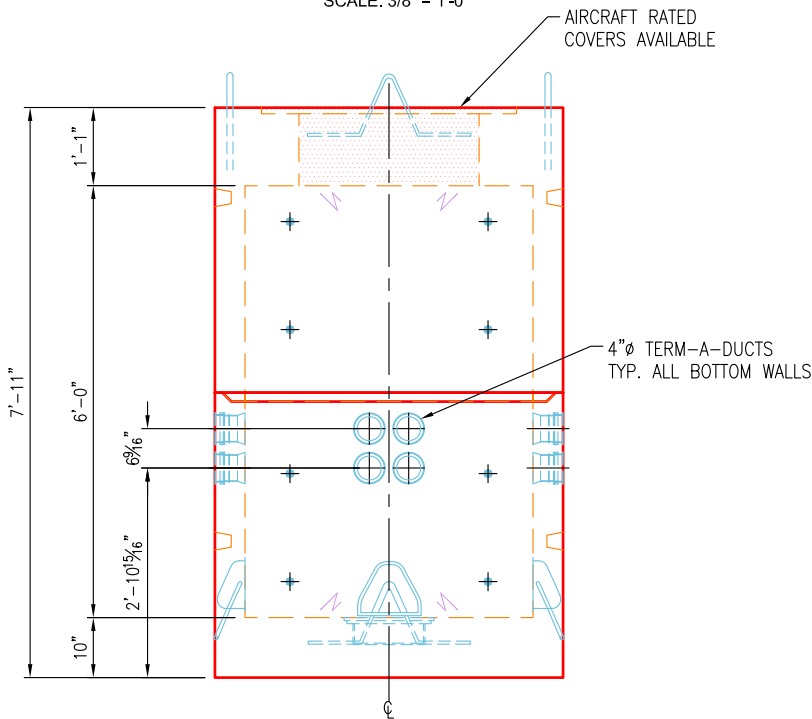
WEIGHTS	
SECTION	WEIGHT
TOP SECTION	6,200 LBS
BASE SECTION	6,400 LBS
TOTAL	12,600 LBS



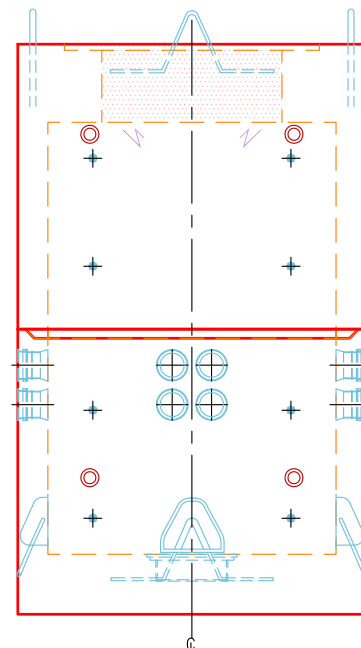
**PLAN VIEW**  
SCALE: 3/8" = 1'-0"



**ISO VIEW**  
SCALE: 3/16" = 1'-0"



**SIDE VIEW**  
SCALE: 3/8" = 1'-0"



**END VIEW**  
SCALE: 3/8" = 1'-0"

**SPECIFICATIONS:**

- Concrete minimum compression strength:  
F'c=5,000 PSI @ 28 days.
- Reinforcing steel: ASTM A615, Fy=60,000 PSI

ITEMS ARE SUBJECT TO CHANGE WITHOUT NOTICE.