

ECCENTRIC CONICAL

"H"	Wt.
48"	4800#

5' TOP SLAB

"H"	Wt.
13"	2875#

5' DIA. BARREL

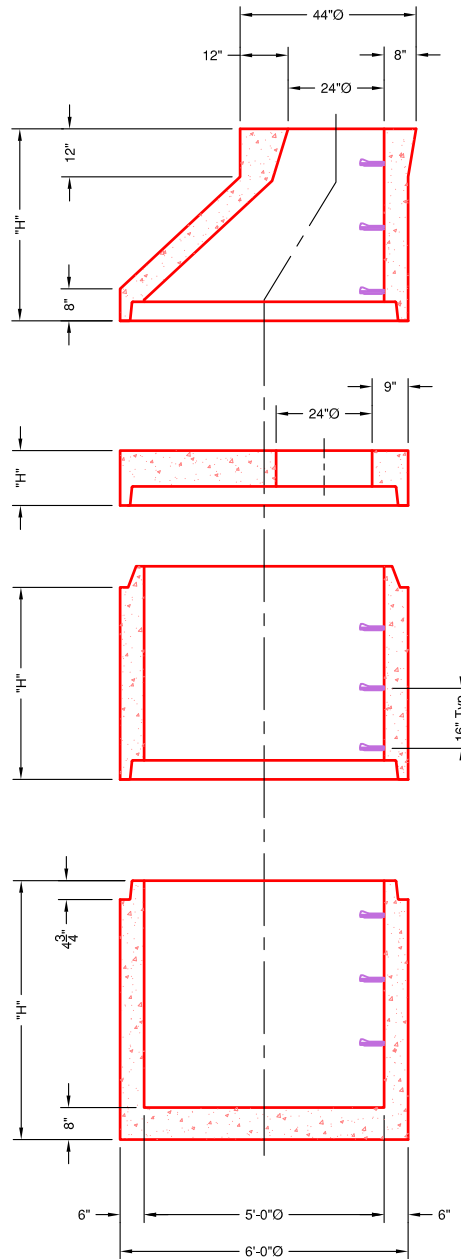
"H"	Wt.
16"	1737#
32"	3460#
48"	5184#
60"	6480#
72"	7775#

*CAN PRODUCE HEIGHTS IN-BETWEEN

5' DIA. BASE

"H"	Wt.
48"	7157#
60"	8453#
72"	9749#

*CAN PRODUCE HEIGHTS IN-BETWEEN



SECTIONAL VIEW

SPECIFICATIONS:

- Concrete minimum compression strength:
F'c=5,000 PSI @ 28 days.
- Reinforcing steel: ASTM A615, Fy=60,000 PSI

ITEMS ARE SUBJECT TO CHANGE WITHOUT NOTICE.