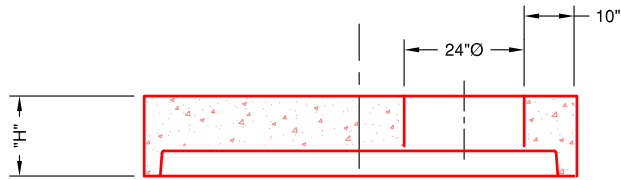


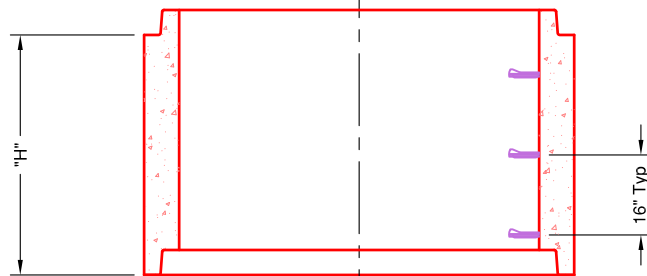
6' TOP SLAB

"H"	Wt.
15"	4924#



6' DIA. BARREL

"H"	Wt.
16"	2410#
32"	4802#
48"	7194#
60"	8992#
72"	10,791#
84"	12,589#
96"	14,387#

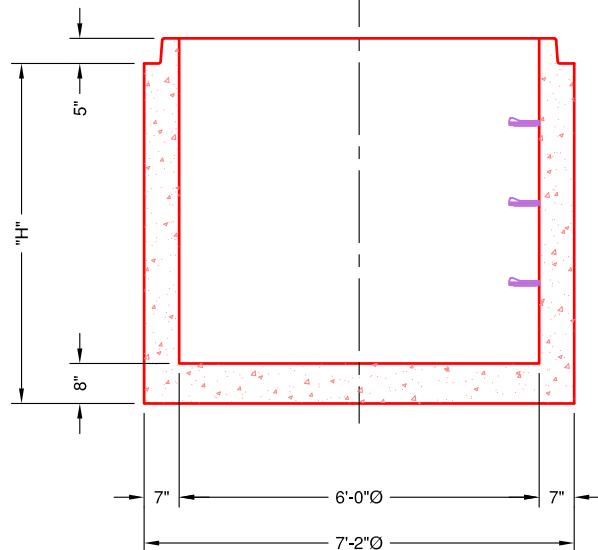


*CAN PRODUCE HEIGHTS IN-BETWEEN

6' DIA. BASE

"H"	Wt.
56"	11,240#
72"	13,632#
84"	15,431#
96"	17,229#

*CAN PRODUCE HEIGHTS IN-BETWEEN



SECTIONAL VIEW

SPECIFICATIONS:

- Concrete minimum compression strength:
F'c=5,000 PSI @ 28 days.
- Reinforcing steel: ASTM A615, Fy=60,000 PSI

ITEMS ARE SUBJECT TO CHANGE WITHOUT NOTICE.