

### 7' TOP SLAB

"H"	Wt.
15"	7002#

### 7' DIA. BARREL

"H"	Wt.
16"	3245#
32"	6466#
48"	9687#
60"	12,108#

### 7' DIA. BARREL

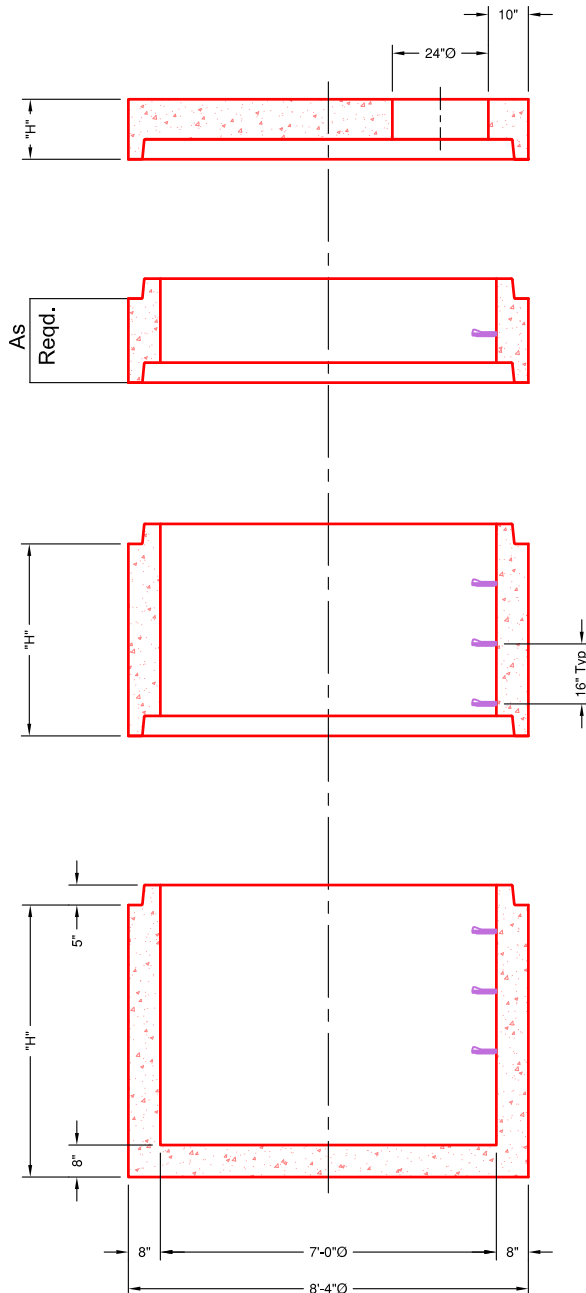
"H"	Wt.
16"	3245#
32"	6466#
48"	9687#
60"	12,108#
72"	14,350#

\*CAN PRODUCE HEIGHTS IN-BETWEEN

### 7' DIA. BASE

"H"	Wt.
48"	13,554#
60"	15,900#
72"	18,310#
80"	20,020#

\*CAN PRODUCE HEIGHTS IN-BETWEEN



### SECTIONAL VIEW

#### SPECIFICATIONS:

- Concrete minimum compression strength:  
F'c=5,000 PSI @ 28 days.
- Reinforcing steel: ASTM A615, Fy=60,000 PSI

ITEMS ARE SUBJECT TO CHANGE WITHOUT NOTICE.