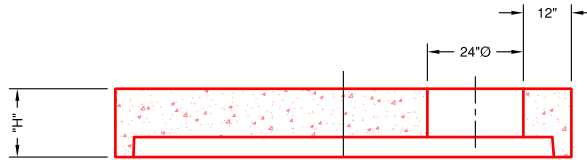


8' TOP SLAB

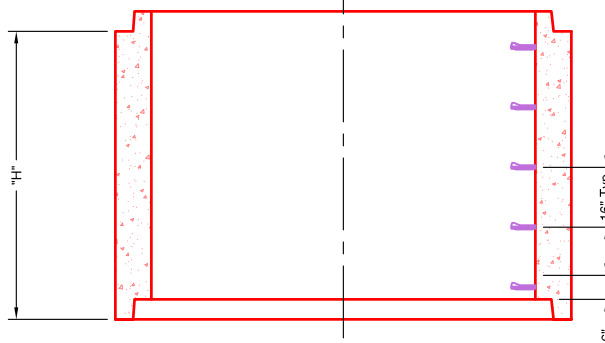
"H"	Wt.
17"	10,890#



8' DIA. BARREL

"H"	Wt.
12"	3093#
24"	6185#
36"	9278#
48"	12,370#
60"	15,463#
72"	18,555#
84"	21,648#
96"	24,740#

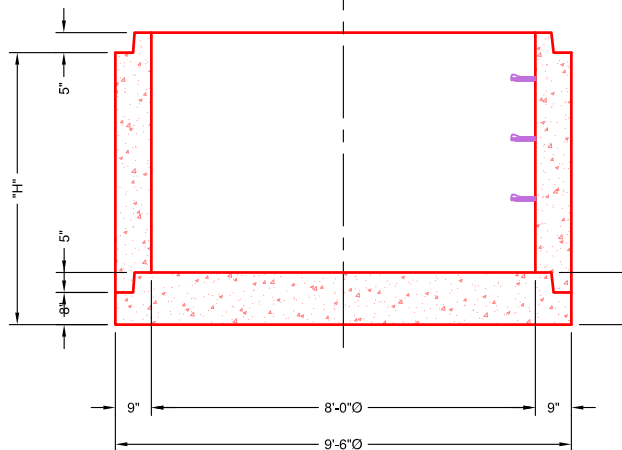
*CAN PRODUCE HEIGHTS IN-BETWEEN



8' DIA. BARREL

"H"	Wt.
12"	3093#
24"	6185#
36"	9278#
48"	12,370#
60"	15,463#
72"	18,555#
84"	21,648#
96"	24,740#

*CAN PRODUCE HEIGHTS IN-BETWEEN



8' DIA. SLAB

"H"	Wt.
8"	10,800#

SECTIONAL VIEW

SPECIFICATIONS:

- Concrete minimum compression strength:
F'c=5,000 PSI @ 28 days.
- Reinforcing steel: ASTM A615, Fy=60,000 PSI

ITEMS ARE SUBJECT TO CHANGE WITHOUT NOTICE.