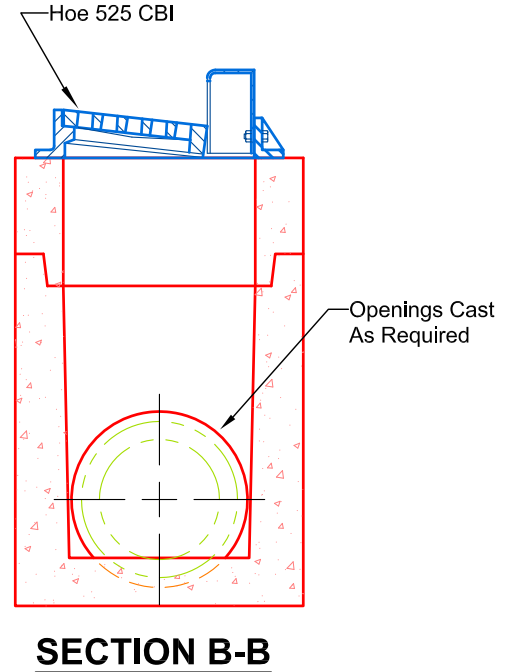
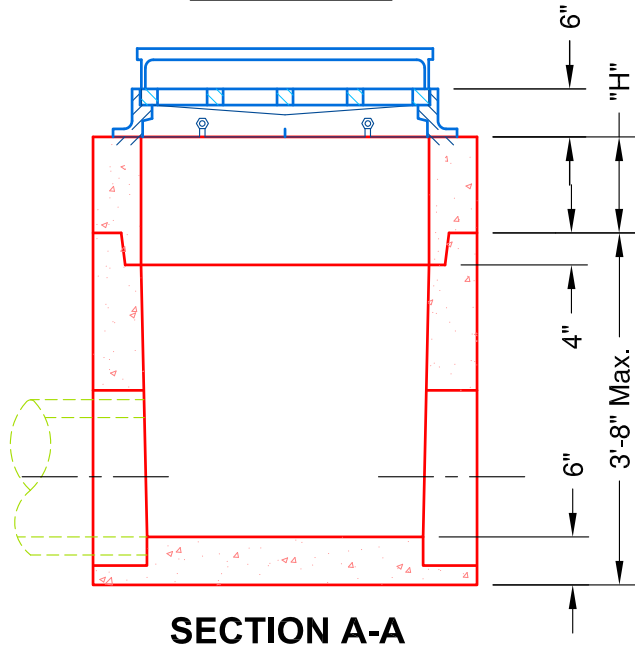
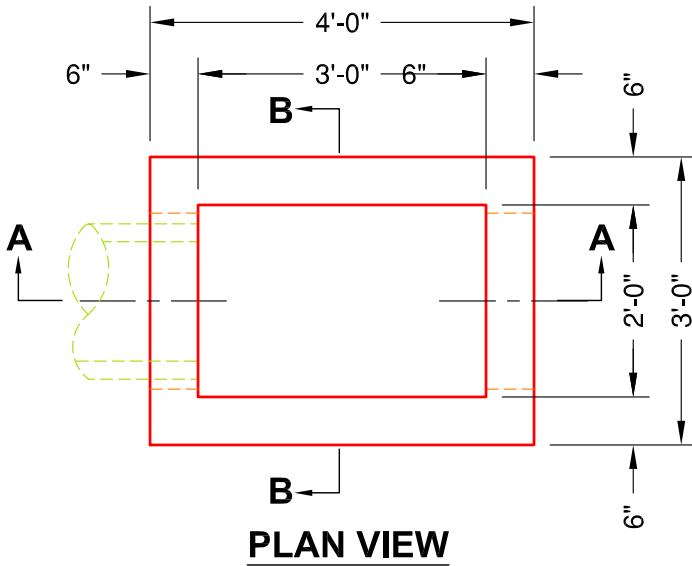

**ISOMETRIC VIEW**

Weights:

"H"	Wt.
6" Riser	450 lbs.
12" Riser	900 lbs.
24" Riser	1800 lbs.
36" Riser	2700 lbs.
44" Base	3750 lbs.


**SPECIFICATIONS:**

1. Concrete minimum compression strength:  
F'c=5,000 PSI @ 28 days.
2. Reinforcing steel: ASTM A615, Fy=60,000 PSI

ITEMS ARE SUBJECT TO CHANGE WITHOUT NOTICE.