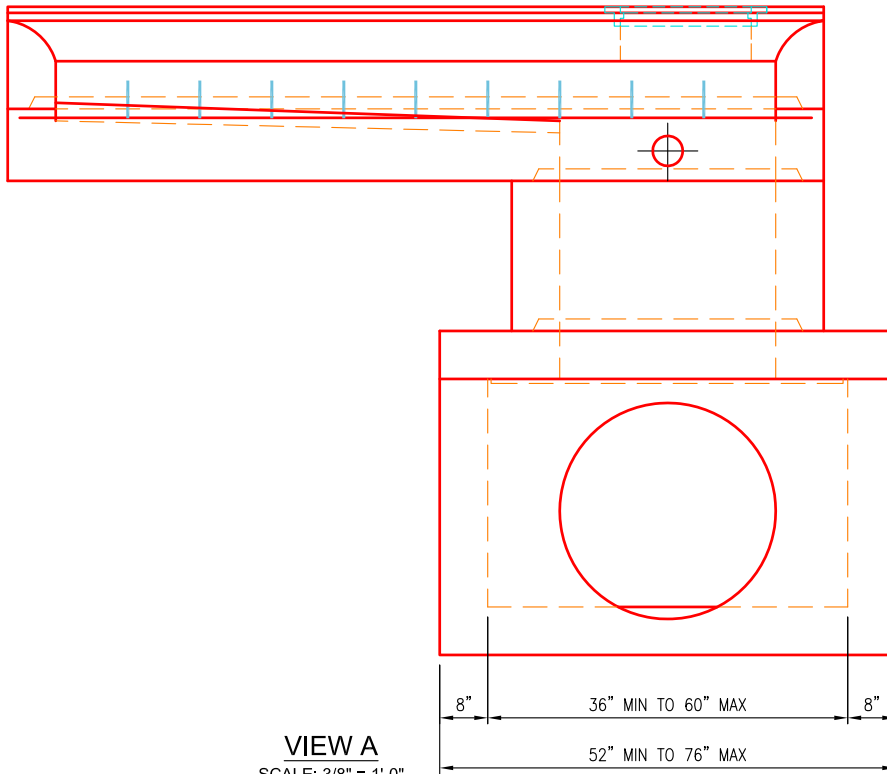
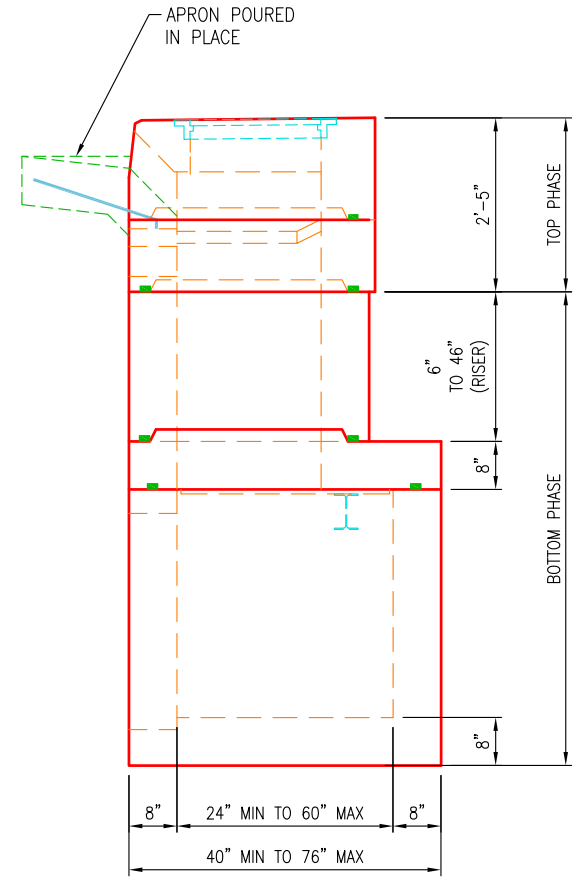

PLAN VIEW
 SCALE: 3/8" = 1'-0"

VIEW A
 SCALE: 3/8" = 1'-0"

VIEW B
 SCALE: 3/8" = 1'-0"

SPECIFICATIONS:

1. Concrete minimum compression strength:
F'c=5,000 PSI @ 28 days.
2. Reinforcing steel: ASTM A615, Fy=60,000 PSI

ITEMS ARE SUBJECT TO CHANGE WITHOUT NOTICE.