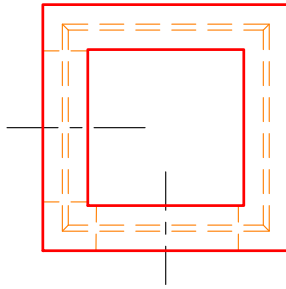




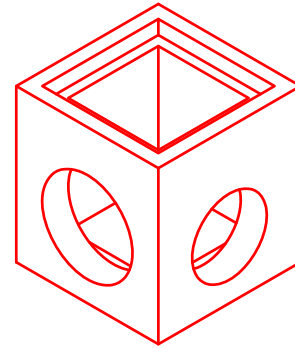
Oldcastle Precast®

WATER

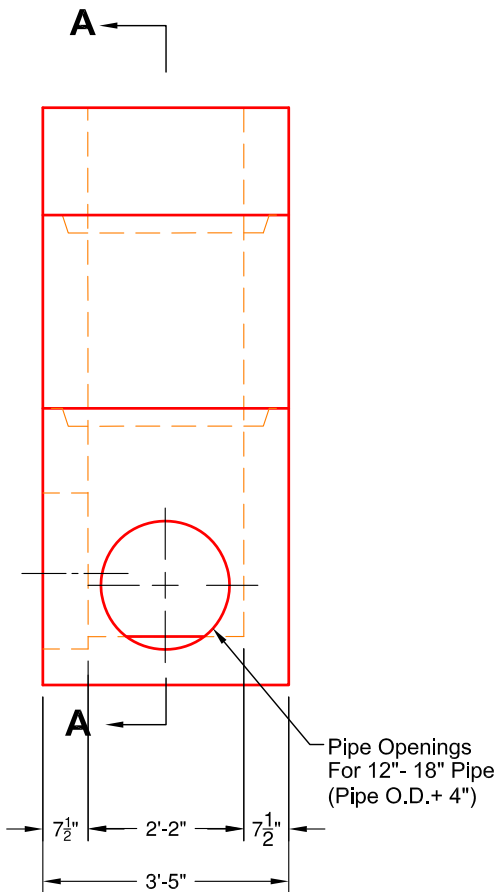
3'-5" x 3'-5" x 12'-2" MAX O.D.
CURB BOX INLET TYPE F KDOT - LFUCG
MODEL #: CBI F - LFUCG-KY



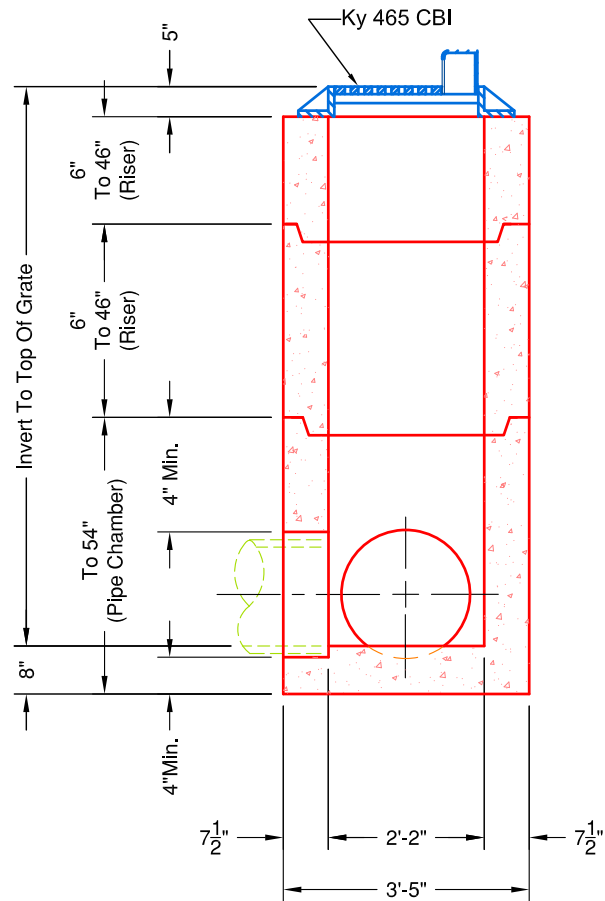
PLAN VIEW



ISO VIEW
SCALE: 1/4" = 1'-0"



ELEVATION VIEW



SECTION A-A

SPECIFICATIONS:

1. Concrete minimum compression strength:
F'c=5,000 PSI @ 28 days.
2. Reinforcing steel: ASTM A615, Fy=60,000 PSI

ITEMS ARE SUBJECT TO CHANGE WITHOUT NOTICE.

Oldcastle Precast
Tri-State Region

For more information about our products
please visit us on the web at:
oldcastleprecast.com/plant/lexington/
Copyright © 2016 Oldcastle Precast, Inc.

Lexington, KY
859-259-1484