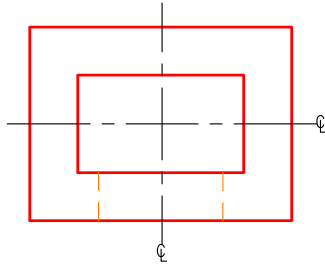




**Oldcastle Precast®**

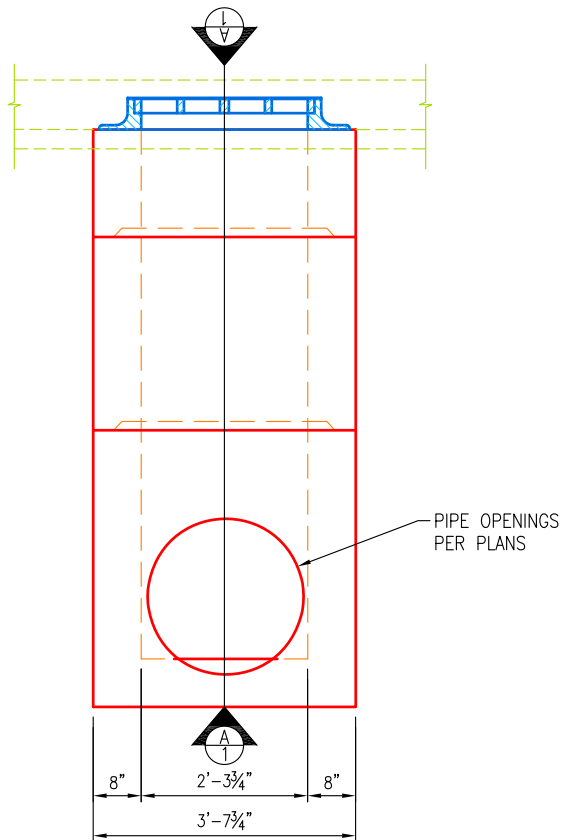
**WATER**

3'-7 3/4" x 2'-8 1/4" x 8'-0" MAX O.D.  
DROP BOX INLET TYPE 10 KDOT  
MODEL #: DROP BI 10 KDOT-KY

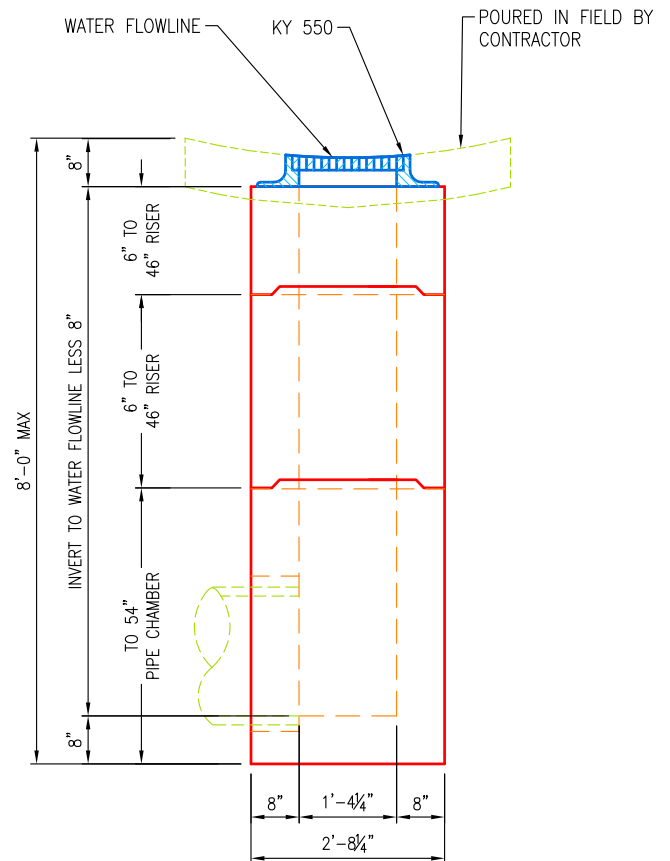


**PLAN VIEW**  
SCALE: 3/8" = 1'-0"

WEIGHTS	
SECTION	WEIGHT
46" PIPE CHAMBER	4, 147 LBS
RISER	1,000 LBS / FT.



**SIDE VIEW**  
SCALE: 3/8" = 1'-0"



**SECTION A-A**  
SCALE: 3/8" = 1'-0"

**SPECIFICATIONS:**

1. Concrete minimum compression strength:  
F'c=5,000 PSI @ 28 days.
2. Reinforcing steel: ASTM A615, Fy=60,000 PSI

ITEMS ARE SUBJECT TO CHANGE WITHOUT NOTICE.

**Oldcastle Precast**  
**Tri-State Region**

For more information about our products  
please visit us on the web at:  
[oldcastleprecast.com/plant/lexington/](http://oldcastleprecast.com/plant/lexington/)  
Copyright © 2016 Oldcastle Precast, Inc.

**Lexington, KY**  
**859-259-1484**