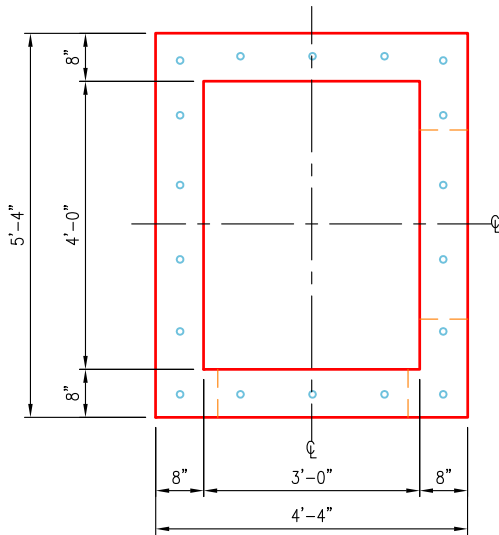




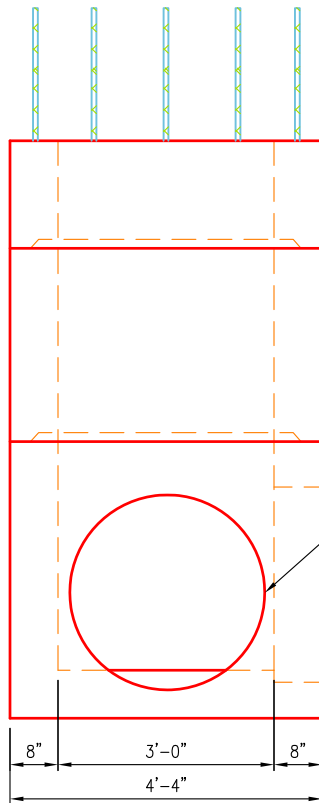
Oldcastle Precast®

WATER

5'-4" x 4'-4" x 12'-0" MAX O.D.
DROP BOX INLET TYPE 2,4,5,6 KDOT
MODEL #: DROP BI 2-4-5-6 KDOT-KY



PLAN VIEW
SCALE: 3/8" = 1'-0"

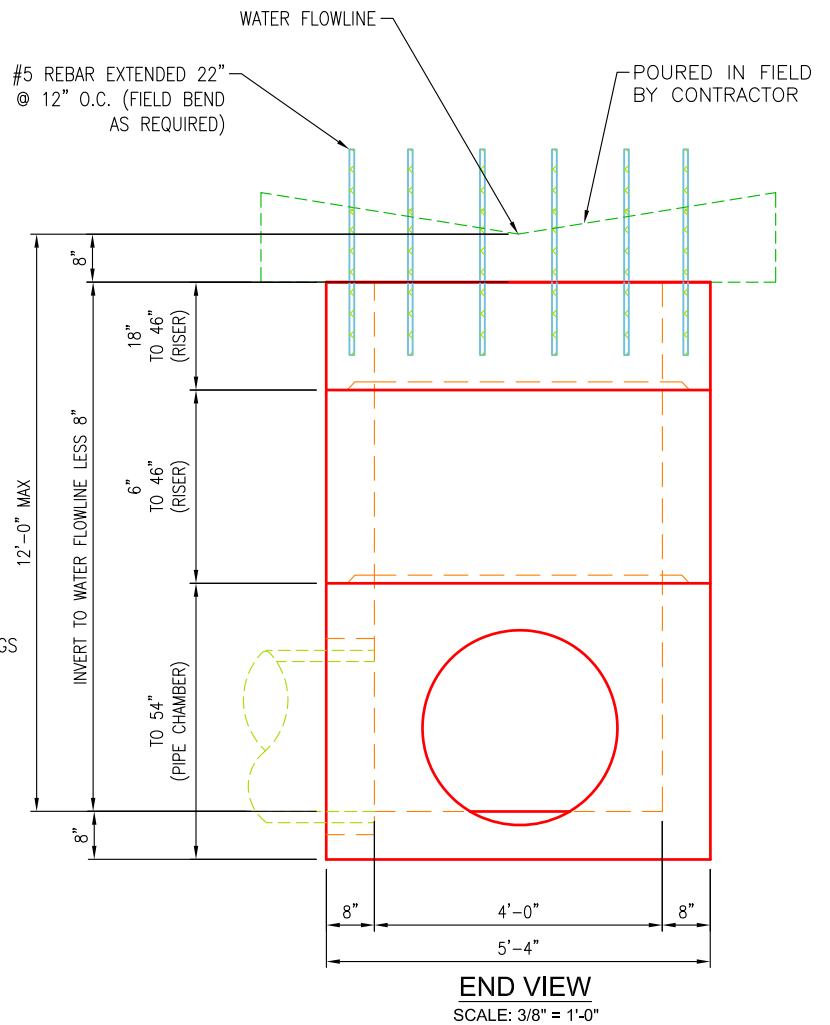


SIDE VIEW
SCALE: 3/8" = 1'-0"

SPECIFICATIONS:

1. Concrete minimum compression strength:
F'c=5,000 PSI @ 28 days.
2. Reinforcing steel: ASTM A615, Fy=60,000 PSI

WEIGHTS	
SECTION	WEIGHT
46" PIPE CHAMBER	7,600 LBS
RISER SECTION	1,900 LBS/FT.



END VIEW
SCALE: 3/8" = 1'-0"

ITEMS ARE SUBJECT TO CHANGE WITHOUT NOTICE.

Oldcastle Precast
Tri-State Region

For more information about our products
please visit us on the web at:
oldcastleprecast.com/plant/lexington/
Copyright © 2016 Oldcastle Precast, Inc.

Lexington, KY
859-259-1484