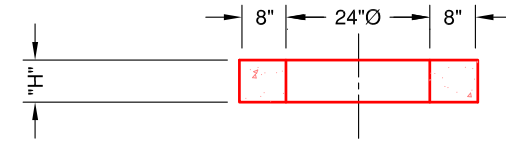


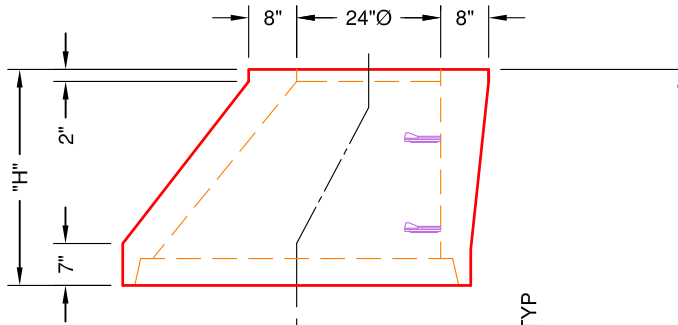
MH GRADE RING

"H"	WT.
2"	140#
4"	280#
6"	480#
8"	560#
12"	730#



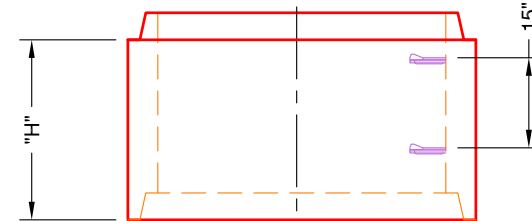
ECCENTRIC CONICAL

"H"	WT.
24"	1280#
30"	1860#
32"	2000#
36"	2440#



4' DIA. BARREL

"H"	WT.
15"	1083#
30"	2168#
45"	3251#



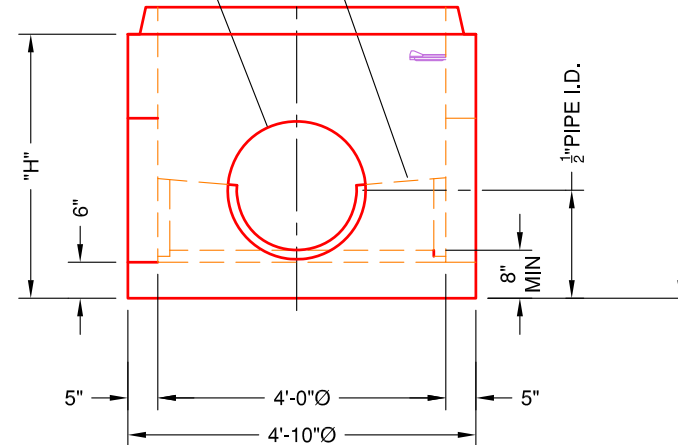
O.D. OF PIPE + 2"-4"

 PREFORMED INVERT
 W/1:12 SLOPE

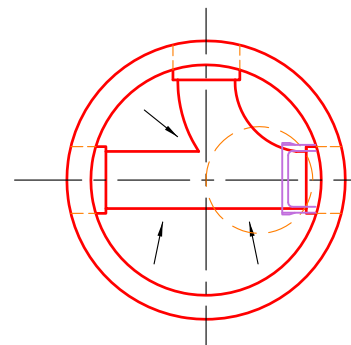
4' DIA. BASE

"H"	Wt.
23"	2730# + INVERT
30"	3236# + INVERT
32"	3380# + INVERT
34"	3524# + INVERT
44"	4238# + INVERT

 OPENINGS CORED OR
 CAST IN AS REQ.

 BASE AVAILABLE WITH
 OPEN BOTTOM


ELEVATION VIEW



PLAN VIEW (BASE ONLY)

9'-1" - 60'-0" MAXIMUM

SPECIFICATIONS:

- Concrete minimum compression strength:
F'c=5,000 PSI @ 28 days.
- Reinforcing steel: ASTM A615, Fy=60,000 PSI

ITEMS ARE SUBJECT TO CHANGE WITHOUT NOTICE.