

FOR MEDIAN BARRIER BOX DESIGNATION:

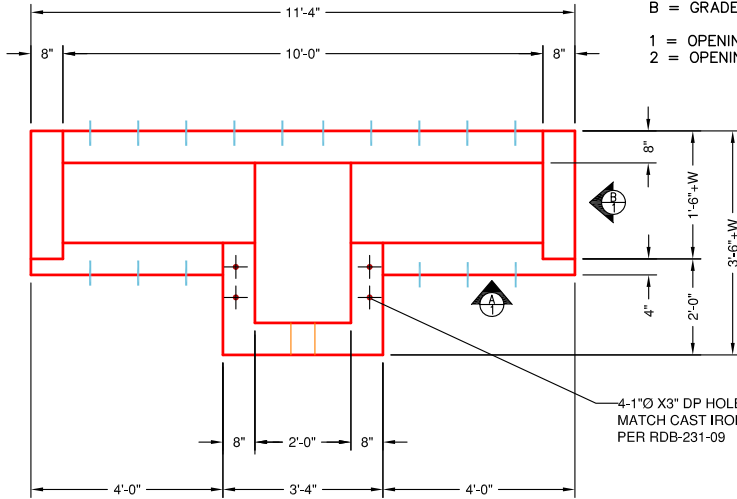
W = 6", 9", 12" OR 14"

A = SAG

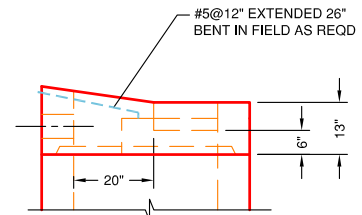
B = GRADE - LEFT OR RIGHT

1 = OPENING ON ONE SIDE OF BOX INLET

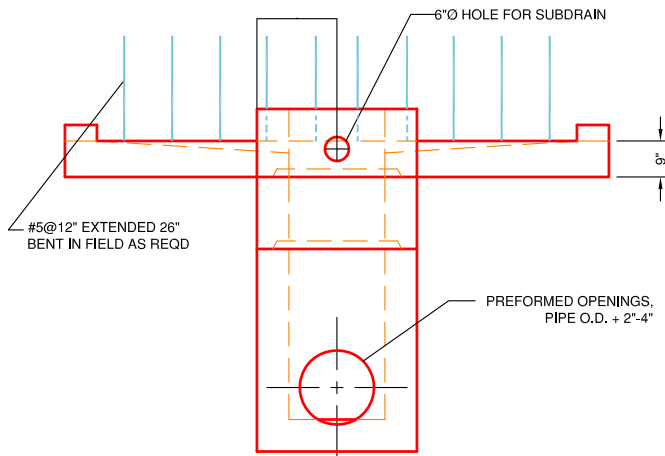
2 = OPENING ON BOTH SIDES OF BOX INLET


**PLAN VIEW**

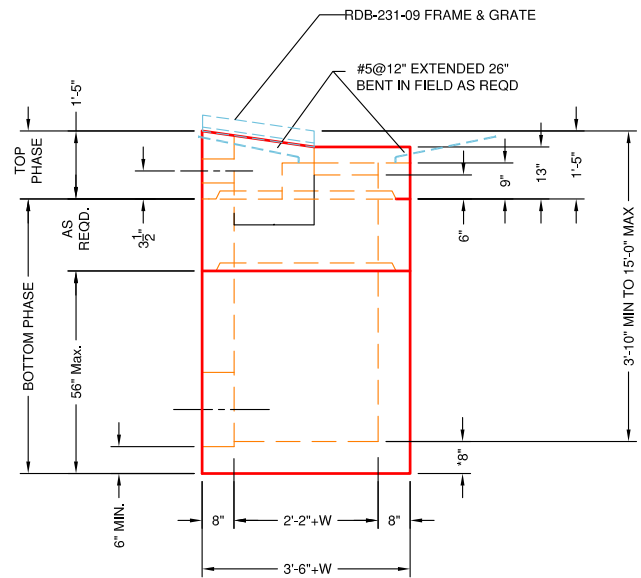
(MEDIAN BARRIER TYPE A2 SHOWN)


**VIEW B**

(MEDIAN BARRIER TYPE A1 SHOWN)


**VIEW A**

(MEDIAN BARRIER TYPE A2 SHOWN)


**VIEW B**

(MEDIAN BARRIER TYPE A2 SHOWN)

**SPECIFICATIONS:**

1. Concrete minimum compression strength:  
F'c=5,000 PSI @ 28 days.
2. Reinforcing steel: ASTM A615, Fy=60,000 PSI

ITEMS ARE SUBJECT TO CHANGE WITHOUT NOTICE.