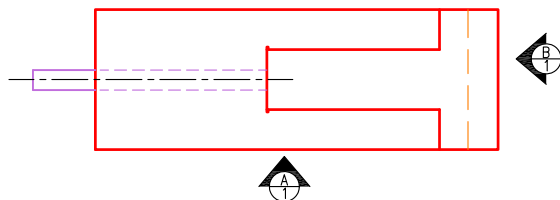
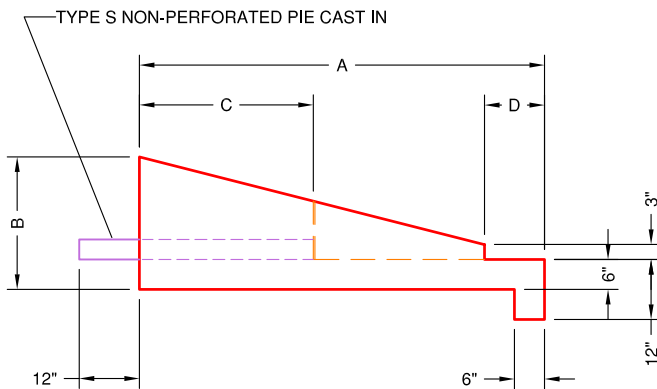
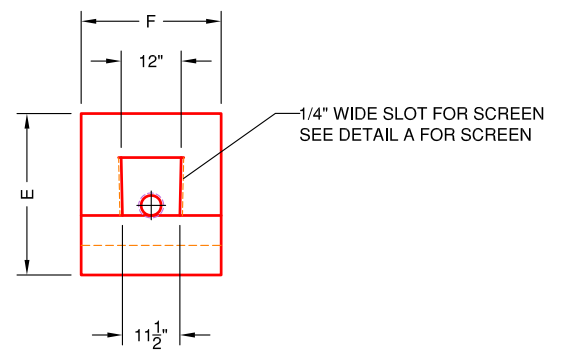

ISO VIEW

PLAN VIEW

TYPE	1	2	3	4	
SLOPE	2:1**		3:1	4:1	6:1
A	43"	45 1/2"	62 1/2"	81 1/2"	86 1/2"
B	26"	28 1/2"	26 1/2"	26 1/2"	21"
C	20"	18 1/2"	26"	35"	18"
D	6"	6"	9"	12"	18"
E	32"	34 1/2"	32 1/2"	32 1/2"	27"
F	29"	29"	28 3/4"	28 1/2"	28 1/2"

** DENOTES SLIGHT VARIATION BETWEEN DIFFERENT MOLDS


VIEW A

VIEW B
SPECIFICATIONS:

- Concrete minimum compression strength:
F'c=5,000 PSI @ 28 days.
- Reinforcing steel: ASTM A615, Fy=60,000 PSI

ITEMS ARE SUBJECT TO CHANGE WITHOUT NOTICE.