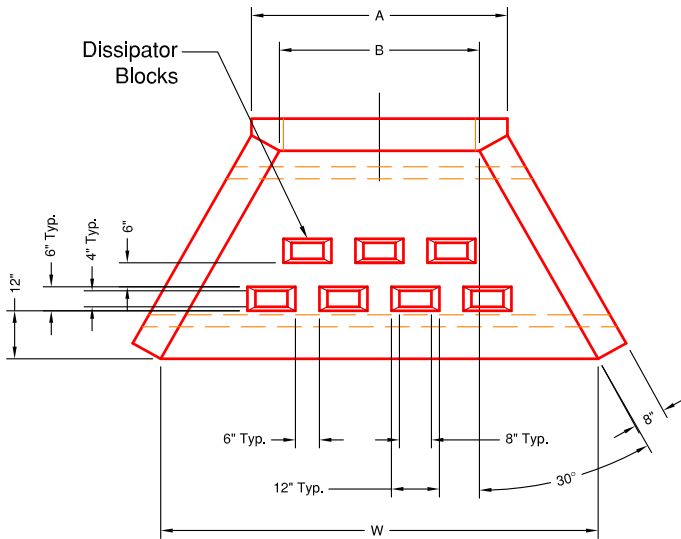
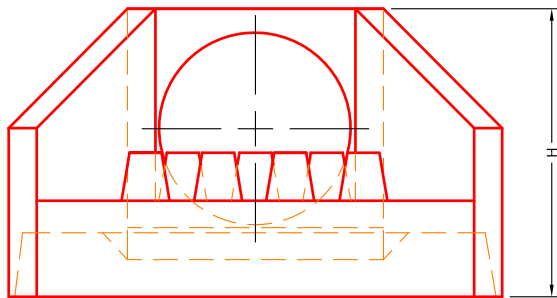


Pipe Size	Hole Size	"W"	"L"	"H"	"A"	"B"	"C"	"D"	"E"	"F"	"G"	Qty Of Dissipators	Weight
30" RCP	40"	110"	60"	72"	64"	50"	48"	18"	13"	14 $\frac{5}{8}$ "	5"	7	9,979 Lbs.
36" RCP	48"								6"	8"	6"	(2 Rows)	
42" RCP	54"	146"	74"	87"	80"	70"	63"	27"	16"	16 $\frac{5}{8}$ "	6"	11	15,637 Lbs.
48" RCP	62"								8"	8"	7"	(2 Rows)	
54" RCP	70"	172"	88"	98"	89"	80"	74"	33"	6"	9"	8"	24	21,676 Lbs.
60" RCP	76"											(3 Rows)	

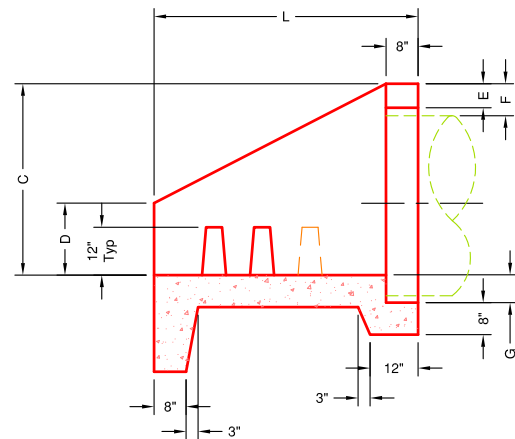
Hole Size For All Other Pipe Types Will Be Pipe O.D.+ 2"-4"



PLAN VIEW



FRONT VIEW



SECTION A-A

SPECIFICATIONS:

- Concrete minimum compression strength:
F'c=5,000 PSI @ 28 days.
- Reinforcing steel: ASTM A615, Fy=60,000 PSI

ITEMS ARE SUBJECT TO CHANGE WITHOUT NOTICE.