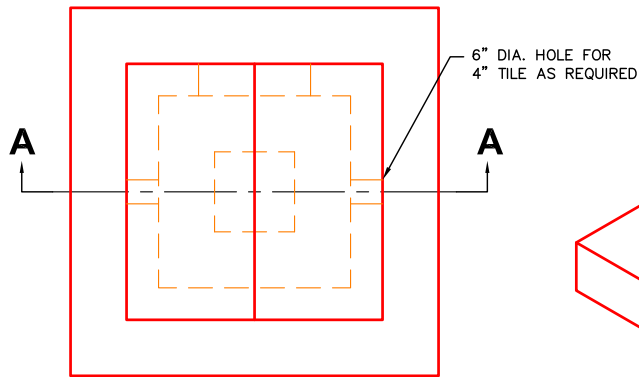
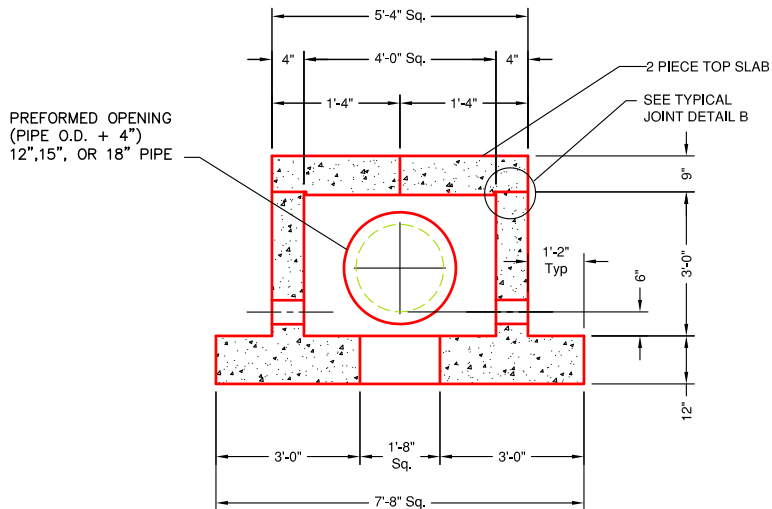
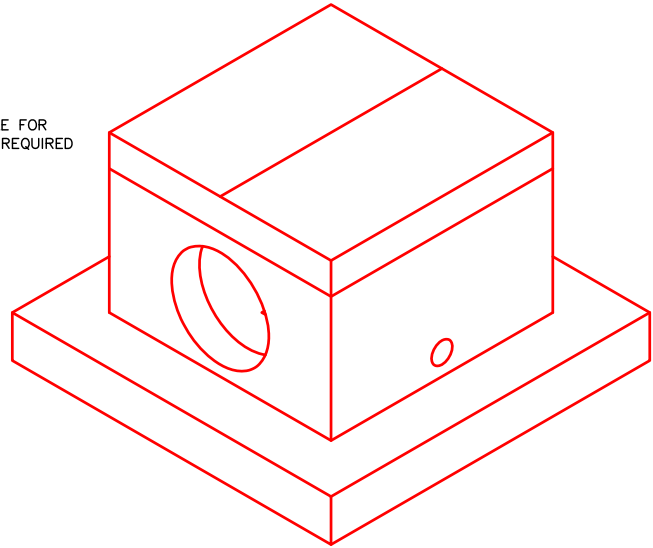
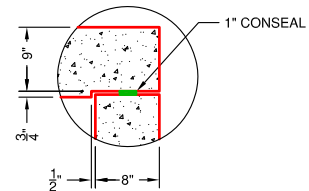


WEIGHTS	
SECTION	WEIGHT
TOP SLAB	2,900 LBS
RISER SECTION	5,700 LBS
BASE SLAB	8,500 LBS


PLAN VIEW

SECTION A-A

TYPICAL JOINT DETAIL B
SPECIFICATIONS:

- Concrete minimum compression strength:
F'c=5,000 PSI @ 28 days.
- Reinforcing steel: ASTM A615, Fy=60,000 PSI

ITEMS ARE SUBJECT TO CHANGE WITHOUT NOTICE.