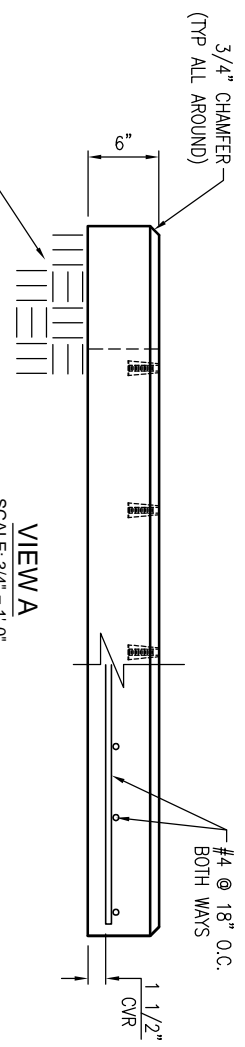


PLAN VIEW
SCALE: 3/4" = 1'-0"



VIEW A
SCALE: 3/4" = 1'-0"

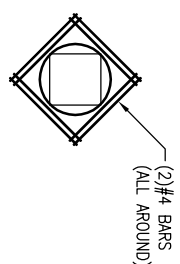
1. USE EXACT BAR SIZE AND SPACING AS NOTED ABOVE.
2. ALL STEEL CUT OUT FOR OPENINGS WILL BE REPLACED, HALF REINFORCEMENT ON EACH SIDE OF OPENING. INCLUDE (2) ADDITIONAL #4 DIAGONAL BARS AROUND OPENING (SEE TYPICAL REINFORCEMENT FOR ALL OPENINGS)

REVISIONS

REV	DATE	BY	SHEET	DESCRIPTION OF REVISION	REQUESTED BY
A					
B					

GENERAL NOTES:

1. CONCRETE: 28 DAY COMPRESSIVE STRENGTH $f'_c = 4,000$ PSI (MIN).
2. REINFORCING: ASTM A-615, GRADE 60.
3. SLAB DESIGNED FOR FDH3000 864 PFP (LARGE) CABINET (180 LBS) LOAD ONLY.
4. SLAB DESIGNED FOR 150 MPH WIND LOAD, IN ACCORDANCE WITH ASCE 7-10, EXPOSURE CATEGORY C, RISK CATEGORY 2.
5. SLAB SHALL BE SUPPORTED IN ACCORDANCE WITH AT&T PROJECT SPECIFICATIONS (I.E. LEVEL AND COMPACTED BEARING SURFACE).



TYPICAL REINFORCEMENT FOR OPENINGS
SCALE: N.T.S.

SECTION	WEIGHT (lb)	Comments
TOTAL	1,300	0.32



THIS DOCUMENT IS THE PROPERTY OF OLDCASTLE PRECAST, INC. IT IS CONFIDENTIAL AND NOT TO BE REPRODUCED OR TRANSMITTED IN ANY FORM OR BY ANY MEANS, ELECTRONIC OR MECHANICAL, INCLUDING PHOTOCOPYING, RECORDING, OR BY ANY INFORMATION STORAGE AND RETRIEVAL SYSTEM. WITHOUT THE WRITTEN PERMISSION OF OLDCASTLE PRECAST, INC. COPYRIGHT © 2014 OLDCASTLE PRECAST, INC. ALL RIGHTS RESERVED.

41X5X6" OD FDH3000 CABINET PAD
SUBMITTAL LAYOUT

864 PFP (LARGE)

CUSTOMER		AT & T (PIN# ATT.100087882)	
DATE	8/28/14	SALES	ENGINEER
DRAWING NUMBER	Lq-FDH 3000 Pad	CHECKED	REVISION
		REV/DATE	1 OF 1