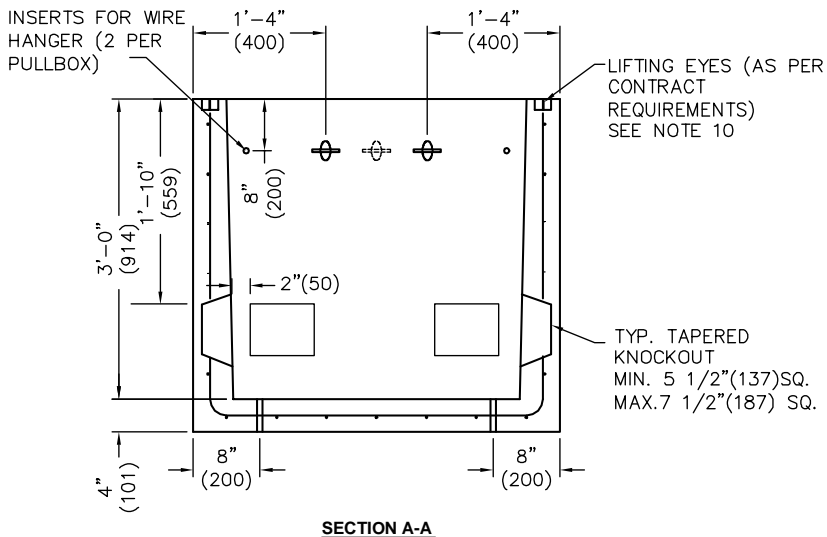


TOP SLAB FRAME AND COVER - SHALL MEET THE REQUIREMENTS SPECIFIED ON/IN THE CONTRACTS ITEM SPEC. OR AS DIRECTED BY DESIGN ENGINEER



GENERAL NOTES

- Unit shall be manufactured in accordance to NYSDOT Standard Specification 723-45.
- Concrete shall have a minimum compressive strength $f'c=3600$ psi (25Mpa) @ 28days with 5.0%-9.0% air content.
- Reinforcement steel shall meet 709-01 and be placed in the center 1/3 of the wall, except knockouts. Minimum cover shall be 1" (25mm)
- Plastic wheel chairs or plastic slab bolsters will be used to maintain concrete cover.
- Units shall be cured in accordance to 704-03. Anticipated method of curing will be moisture retention.
- All dimensions shall be in inches (mm) unless noted otherwise.
- Standard knockouts and insert locations are shown for each pullbox. The contractor may also elect to furnish pullboxes with only the number and size conduit openings and inserts that are required for the particular installation.
- Dimensional Tolerances. The following tolerances shall apply, unless noted on contract documents, approved fabrication drawings or item specification:
 - unit dimensions $\pm 1/2$ inch
 - variations in required spacing of reinforcing steel, not cumulative ± 2 inches
 - concrete cover over reinforcing steel $+5/8$ inch $-1/4$ inch
- Marking. Units shall be marked in accordance to 723-45, on inside of unit, see typical legend.
Oldcastle Precast, M.I.
NYSDOT
Piece ID#
DATE CAST
- Lifters shall be placed on top or side of box as per contract requirements.

