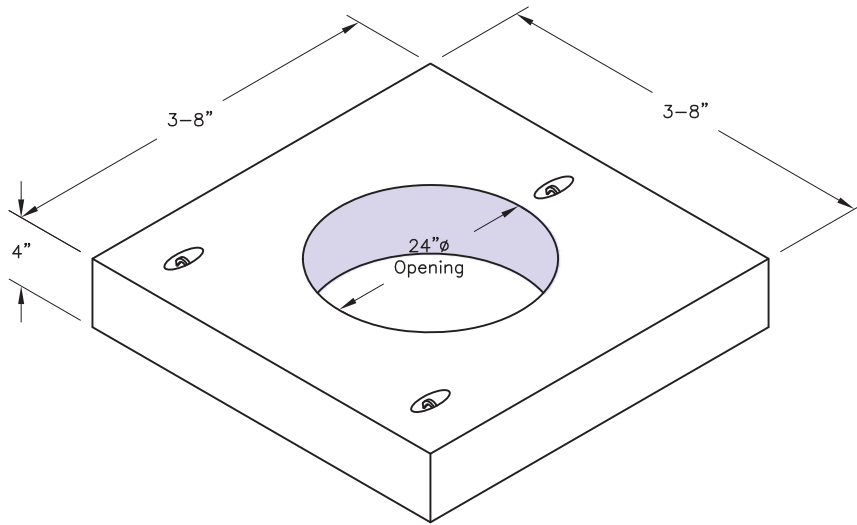
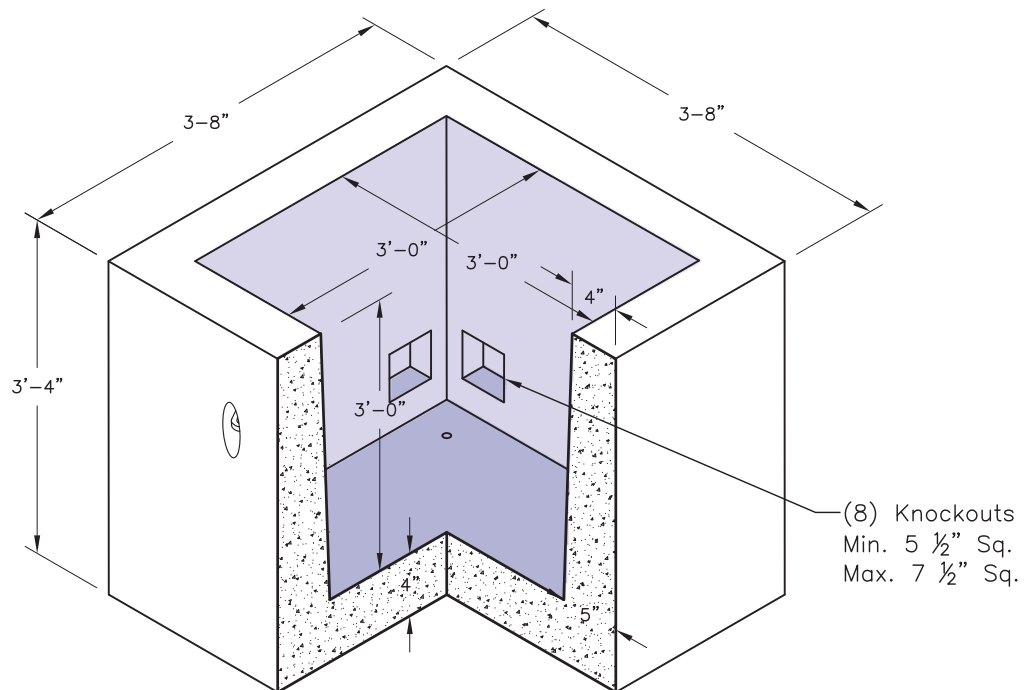


Top Slab

Body

SPECIFICATIONS:

1. Concrete shall be 3000 PSI at 28 day compressive strength with 5.0%-9.0% air content.
2. Steel reinforcement shall meet 709-01 and be placed in the center 1/3 of the wall, except knockouts. Minimum cover shall be 1".
3. Unit shall be manufactured in accordance to NYSDOT Standard Specification 723-45.

GENERAL NOTES:

1. Standard knockouts and insert locations are shown. The contractor may also elect to furnish pull boxes with only the number and size conduit openings and inserts that are required for the particular installation.
2. Lifters shall be placed on top or side of box as per contract requirements.