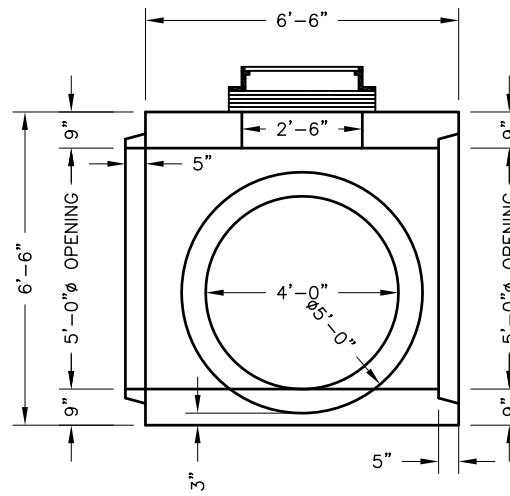
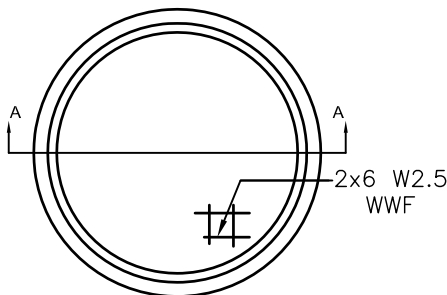
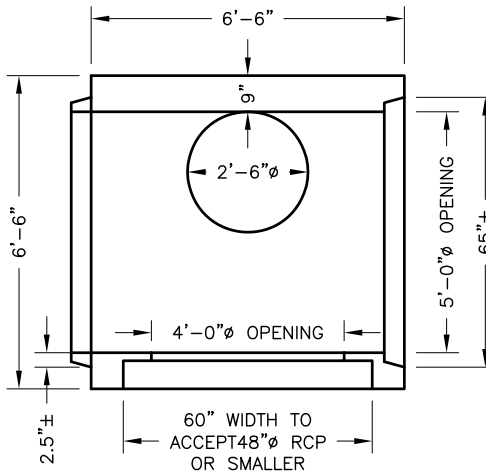
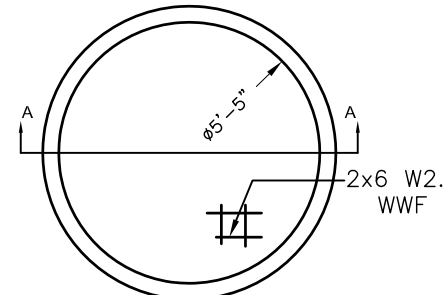
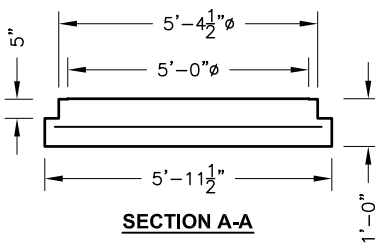
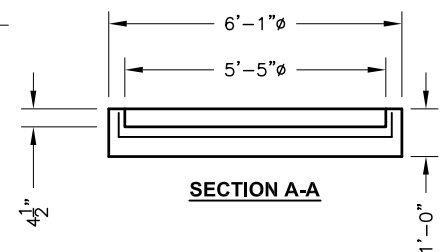

**SIDE VIEW**

**FRONT VIEW**

**PLUG DETAIL**

**PLAN VIEW**

**CAP DETAIL**

**SECTION A-A**

**SECTION A-A**
**SPECIFICATIONS:**

1. Concrete: Has a design strength of 4,000 psi at 28 days.
2. Construction as per latest revision of ASTM C-76 and designed for AASHTO HS-20 truck loading.
3. Wire welded fabric as per ASTM A-185, Grade 70.  
 Inside Steel WWF Reinforcement = 2x8 W6  
 Inside Steel Area = 0.36 in<sup>2</sup>/LF  
 Outside Steel WWF Reinforcement = 3x6 W5  
 Outside Steel Area = 0.20 in<sup>2</sup>/LF

**GENERAL NOTES:**

1. Bell & spigot joints available.
2. Manhole openings available upon request.
3. Any alteration to this drawing must be submitted to Oldcastle Precast, Inc. prior to production.