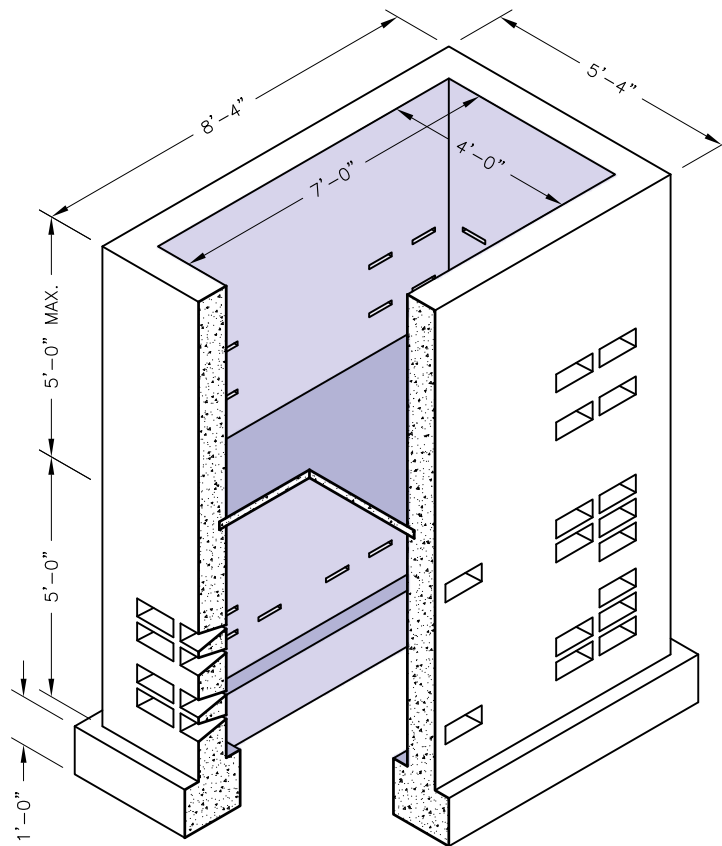


Leaching Basin

SPECIFICATIONS:

1. Concrete: 28 Day Compressive Strength $f'_c = 4,000\text{psi}$.
2. Reinforcement meets ASTM A-615, Grade 60.
3. Refer to SCDPW standard sheet SC100D-88 for all other requirements.

GENERAL NOTES:

1. Total interior wall opening in top section to be 450 sq. in. min. / 850 sq. in. max.
2. Total interior wall opening in bottom section to be 900 sq. in. min. / 1700 sq. in. max.