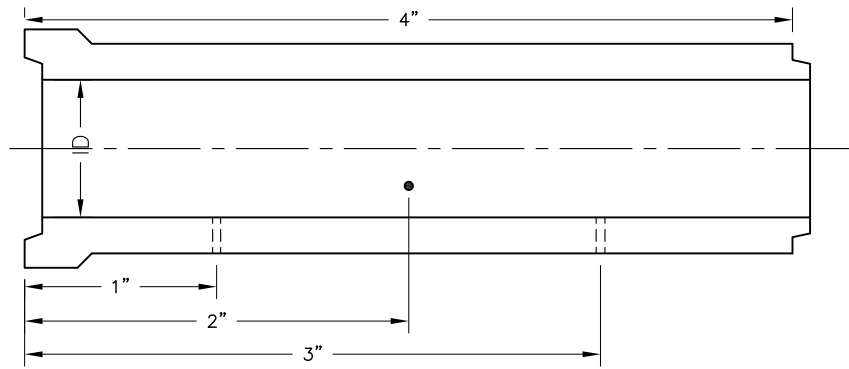


Staggered Pattern
Symmetrical About Centerline
as Listed in Chart below.

No. of Holes Vary Depending
on Diameter; See Chart Below.

Area of Opening Per Foot
Comparable to Design Criteria
of ASTM C444 Using 1" Holes.

Alternate Design Patterns
and/or Openings Available.



Pipe Dia.	# of Rows	# of 1" Holes Per 8' Length	Sym. Stagger Pattern	Open=IN ² /FT	L	O.L.
27"	8	12	1/2/1/2:	1.2	5½"	6⅞"
30"	8	12	1/2/1/2:	1.2	6⅞"	7⅝"
33"	8	12	1/2/1/2:	1.2	6¾"	8⅜"
36"	8	12	1/2/1/2:	1.2	7½"	9"
42"	10	14	1/2/1/2/1:	1.4	6¾"	8⅜"
48"	12	18	2/1/2/1/2/1:	1.8	6¼"	7¾"
54"	14	20	1/2/1/2/1/2/1:	2.0	6"	7⅜"
60"	14	20	1/2/1/2/1/2/1:	2.0	6½"	8⅞"
66"	16	24	2/1/2/1/2/1/2/1:	2.4	6¼"	7¾"
72"	16	24	2/1/2/1/2/1/2/1:	2.4	6⅞"	8⅜"

GENERAL NOTES:

1. Dimensions Shown are Measured from Bell End.
2. Area of Opening Per Foot Comparable to ASTM C444 Using 1" Dia. Holes.