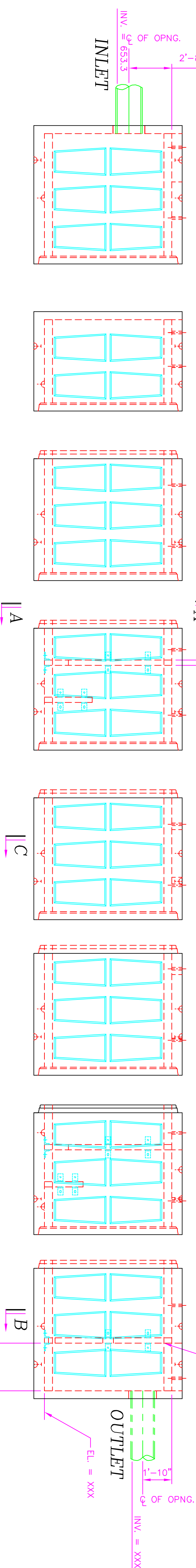
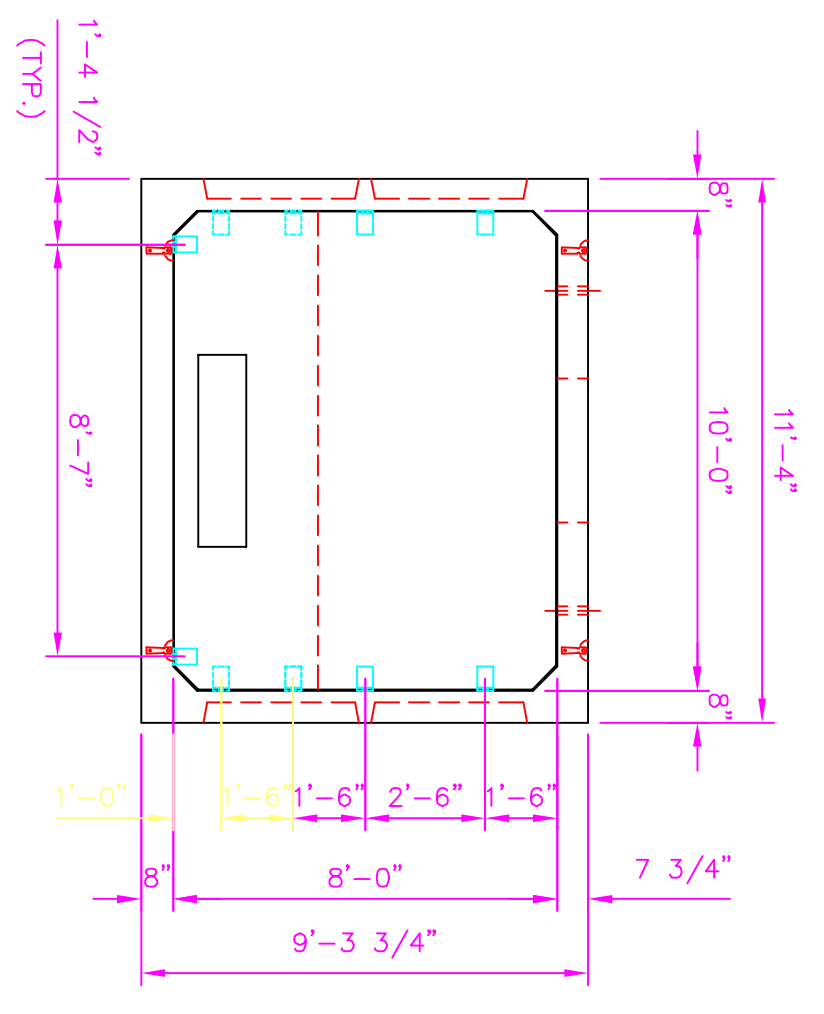


For additional information or assistance with sand filter sizing please contact:
Michael A. Snipas
 Oldcastle Precast-Environmental
 215-453-2490
Michael.Snipas@Oldcastleprecast.com

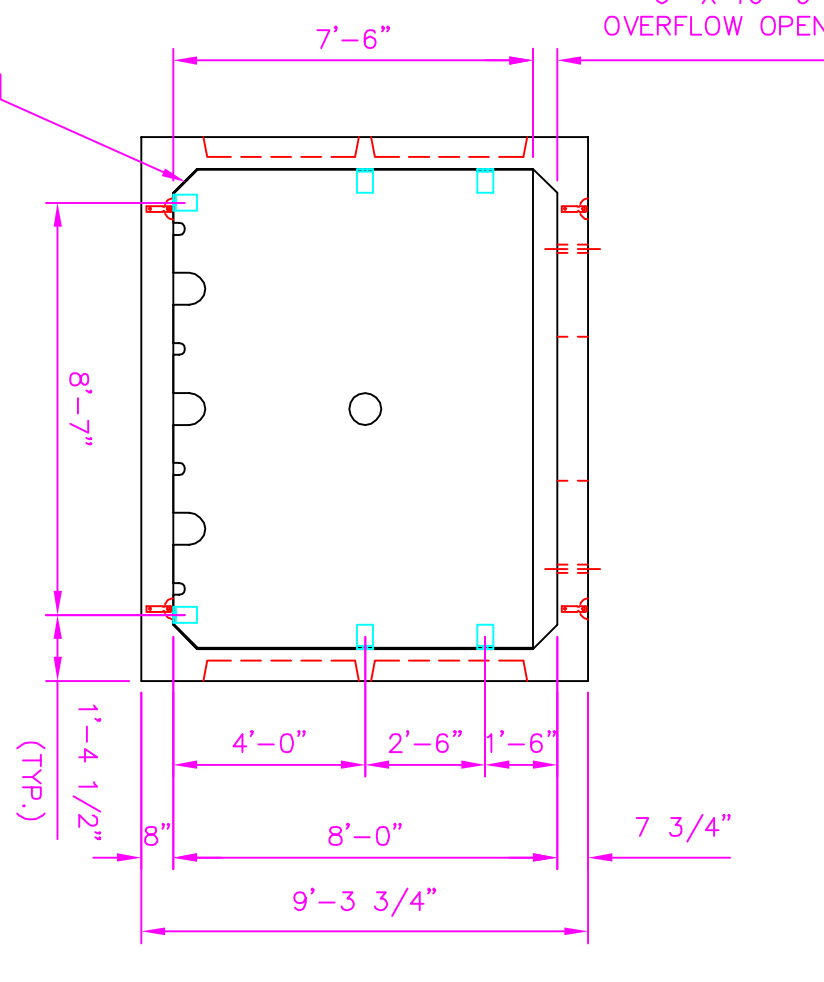


PROFILE

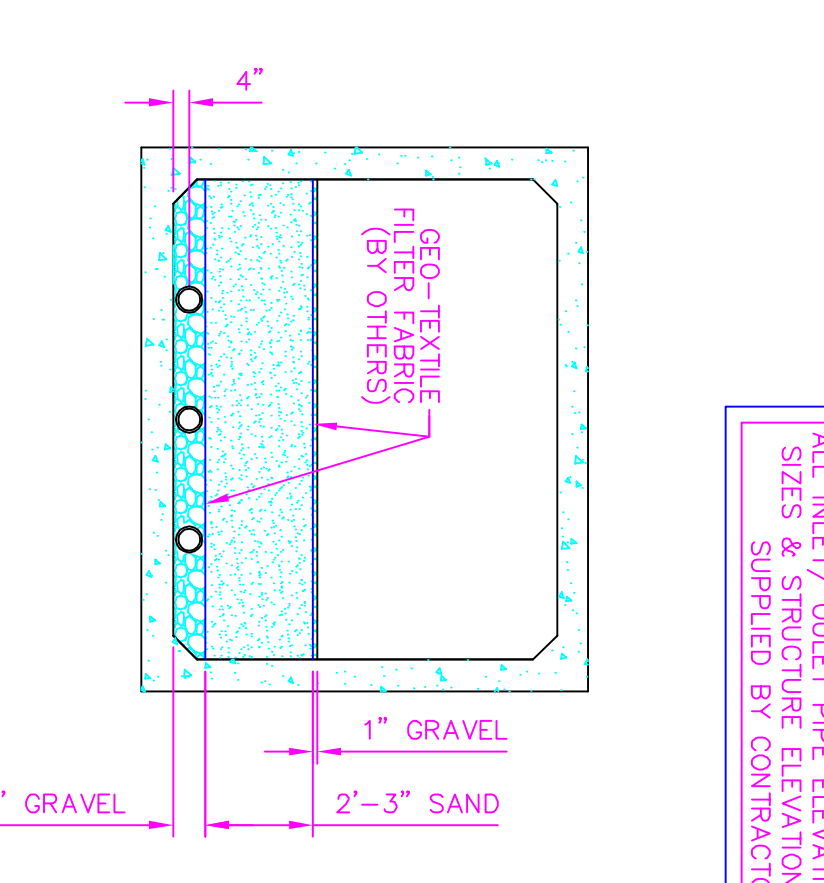
ALL INLET/ OULET PIPE ELEVATIONS, PIPE SIZES & STRUCTURE ELEVATIONS TO BE SUPPLIED BY CONTRACTOR



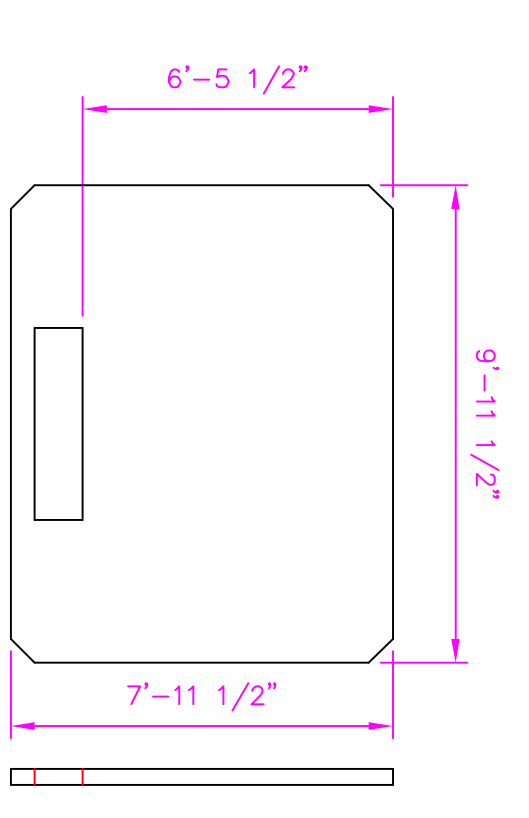
SECTION A-A



SECTION B-B



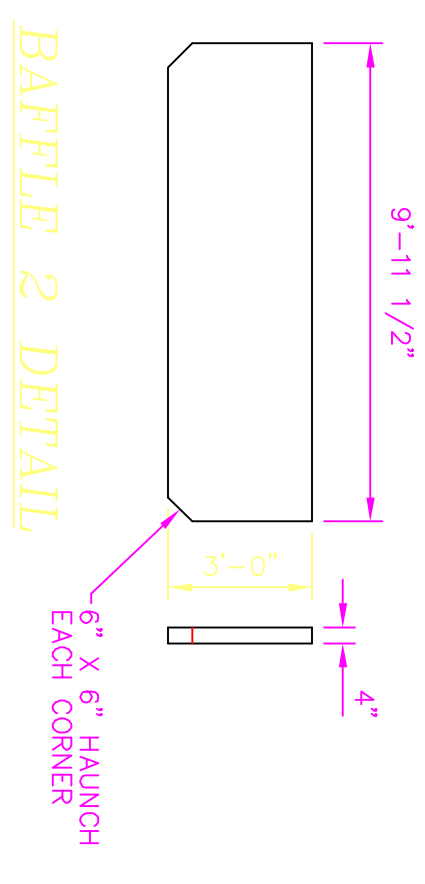
SECTION C-C



BAFFLE 1 DETAIL

DESIGN NOTES
 CONCRETE MINIMUM COMPRESSIVE STRENGTH 5000 @ 28 DAYS
 STEEL REINFORCEMENT - ASTM A615, GRADE 60
 COVER TO STEEL - 1 1/4" OUTSIDE, 1" INSIDE
 DESIGN LOADING - AASHTO HS20-44
 DESIGN SPECIFICATIONS - ACI 318-02 & ASTM C 890

ASSUMPTIONS
 GROUND WATER @ FINISHED GRADE
 EARTH COVER - 1'-0" MIN TO 8'-0" MAX
 2'-0" LIVE LOAD SURCHARGE APPLIED TO 8'-0" DEPTH
 LIVE LOAD IMPACT - 0" TO 1' COVER I = 30%
 COEFFICIENT OF ACTIVE EARTH PRESSURE (K) = 0.5 MAX, 0.25 MIN
 DRY EARTH DENSITY = 120



BAFFLE 2 DETAIL

BAFFLE 2 DETAIL

BAFFLE 3 DETAIL
 9'-11 1/2" length, 4" width, 3" x 6" weephole, 7'-6" width, 6" x 10'-0" overflow opening, 3'-0" clearwell.

BAFFLE 3 DETAIL

BAFFLE 3 DETAIL

BY APPROVING THIS DRAWING THE CONTRACTOR/ENGINEER HAS VERIFIED THAT ALL INFORMATION SHOWN ON DRAWING HAS BEEN THOROUGHLY CHECKED, COMPARES WITH THE CONTRACT DOCUMENTS, AND IS ADEQUATE TO MEET THE FIELD CONDITIONS. OLDCASTLE PRECAST ACCEPTS NO RESPONSIBILITY FOR INSTALLATION ERRORS BY THE CONTRACTOR.
 NOTE: PRODUCTION WILL NOT COMMENCE UNTIL RECEIPT OF SIGNED APPROVED SHOP DRAWINGS.

Oldcastle Precast—Telford

DATE: 4/10/2009	DESIGNED BY:	DRAWN BY:
SCALE: 1/4"=1'-0"	CHECKED BY:	SHEET 1 OF X
200 KEYSTONE DRIVE TELPHONOVA, VA 28989 215-257-8081		10'-0" X 8'-0" DRAWING NUMBER: SF-11XXXX
WEBSITE SAMPLE		