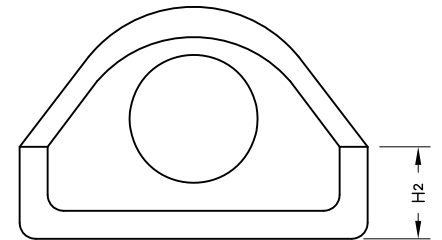


Spigot



Dia in.	A in.	B in.	C in.	T ₁ in.	T ₂ in.	H ₁ in.	H ₂ in.	L in.	S in.	R in.
12	30	23.5	46	3/4	5	13	11	74	27	8
15	30	23.5	46	3/2	3/2	16	11	74	27	11
18	36	28	46	3/2	3/2	19	13	73	27	9
21	48	33	30	4/2	6	22	14	73 1/2	43 1/2	14
24	48	33	30	4/2	4/2	25	13 1/2	73 1/2	43 1/2	14

GENERAL NOTES:

- 1. Reinforcing in the "C" Portion shall be the Same as Specified for Concrete Pipe ASTM C76 and AASHTO M170 Class III for the Size of Connection Pipe.**
- 2. Concrete shall Have a Minimum Strength of 4000 psi.**
- 3. Variations in Manufacturing Dimensions shall be as Called for in ASTM C76 and AASHTO M170.**
- 4. Pipe to End Section Connection shall Match Joints of Standard Pipe Details.**
- 5. Refer to Standard Details for Information not Listed on this Drawing.**