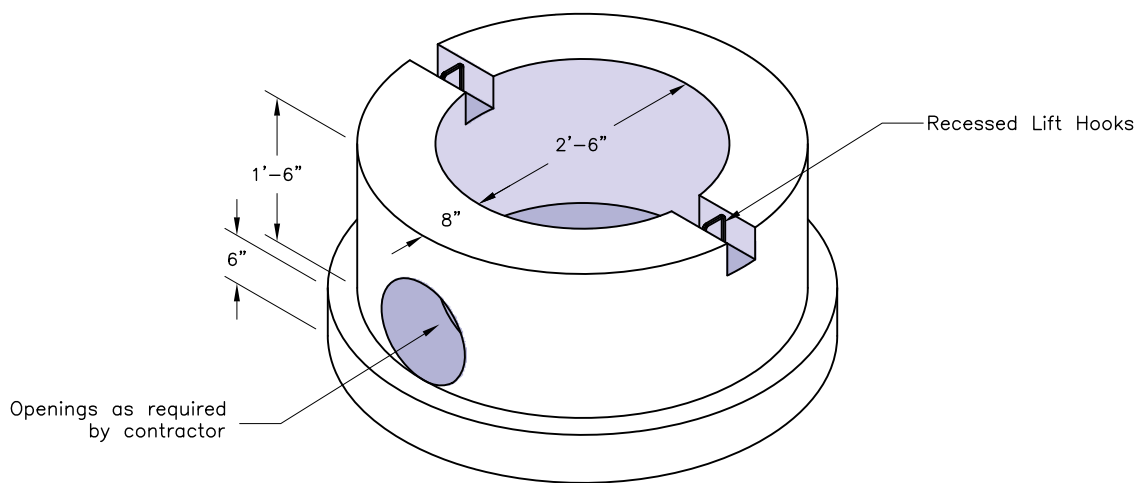


**Drop Inlet****SPECIFICATIONS:**

1. Concrete: 28 Day Compressive Strength  $f'_c = 4,000$  psi.
2. Steel reinforcement: ASTM A-615, Grade 60.
3. Designed for 18" min. ground cover from top of pipe to top of grate.
4. For drop inlets D1 & D2, 10"Ø pipe permitted on runs of 30 ft. or less, otherwise use 12"Ø pipe as the minimum size.