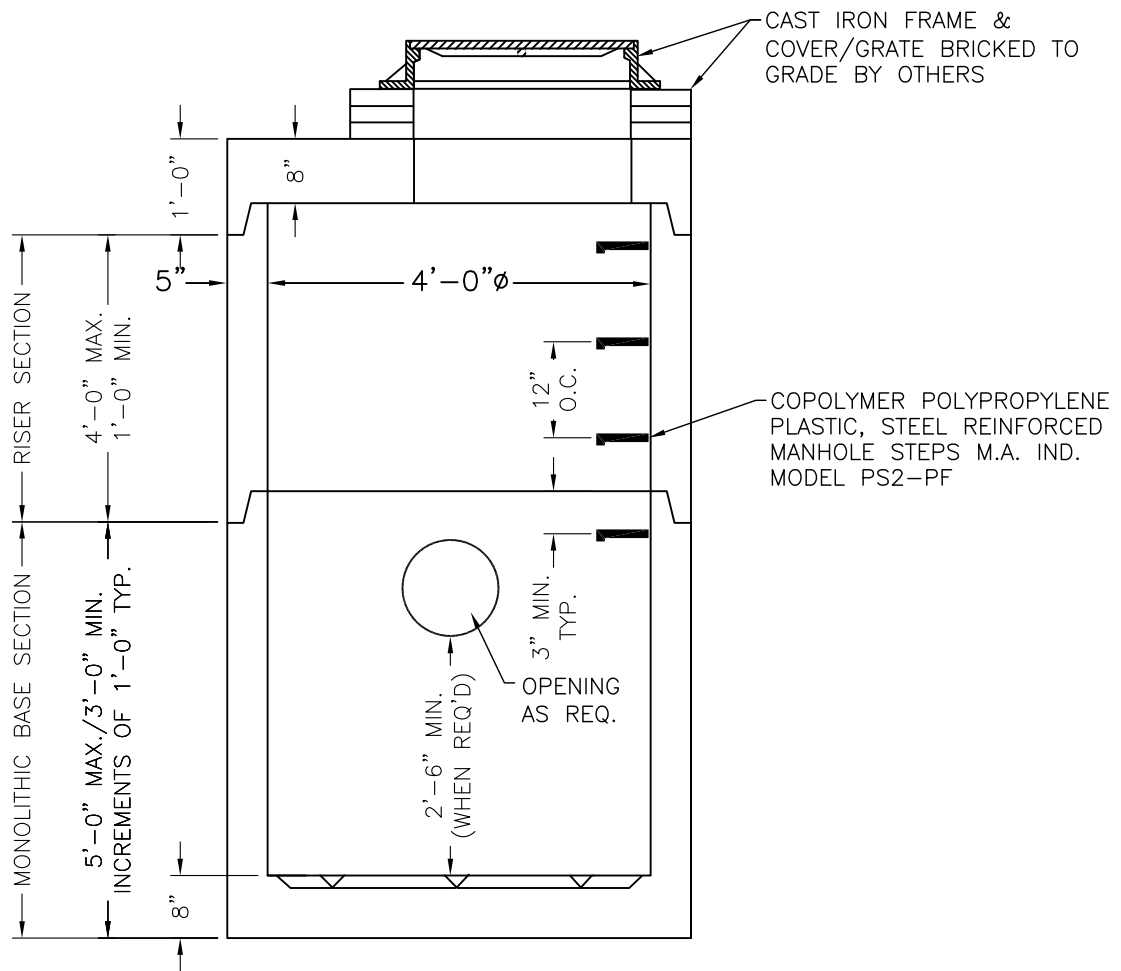


NYC Dept. of Parks & Recreation 4'-0" Ø Manhole

SECTION A-A
GENERAL NOTES:

1. Concrete: 28 Day Compressive Strength $f'_c = 4,000\text{psi}$.
2. Steel Reinforcement: ASTM A-615, Grade 60, ASTM A-185.
3. Manhole riser reinforcement complies with ASTM C-478.
4. Designed for AASHTO HS-20-44 loading with 12" min. cover.
5. Concrete bench (invert) to be poured in field, by others.