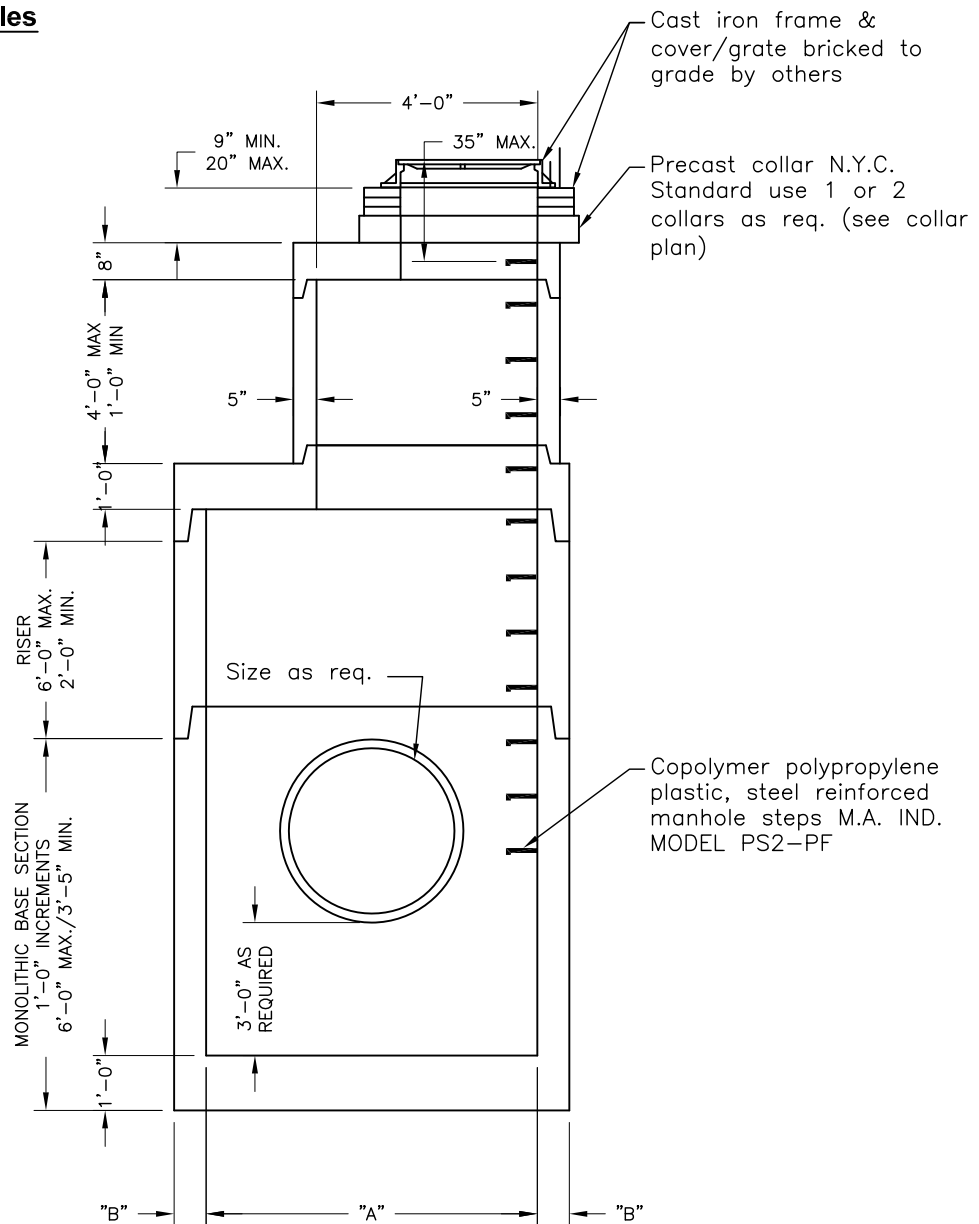


**NYC Manholes**

**SECTION A-A**

NYC Manholes	
DIM. "A"	DIM. "B"
6'-0"	7"
7'-0"	8"
8'-0"	9"
10'-0"	11"

**GENERAL NOTES:**

- Concrete: 28 Day Compressive Strength  $f'c = 4,000\text{psi}$ .
- Steel Reinforcement: ASTM A-615, Grade 60, ASTM A-185.
- Designed for AASHTO HS-20-44 loading.