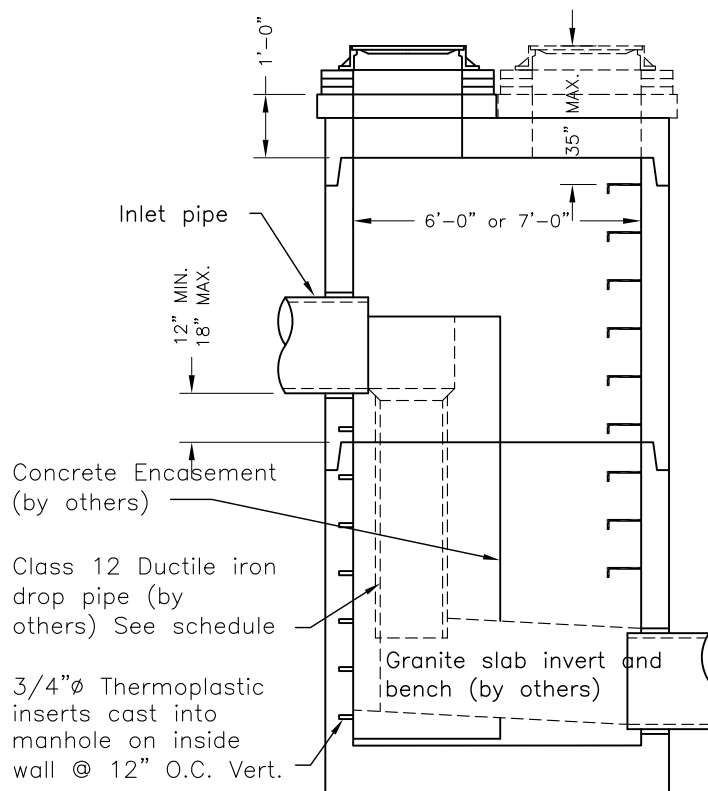

**PLAN**

**SECTION A-A**

SCHEDULE	
INLET PIPE	DROP PIPE
10"Ø	8"Ø
12"Ø	10"Ø
15"Ø	12"Ø
18"Ø	14"Ø
21"Ø	16"Ø
24"Ø	16"Ø
30"Ø	20"Ø

**GENERAL NOTES:**

1. Concrete: 28 Day Compressive Strength  $f_c = 4,000\text{psi}$ .
2. Steel Reinforcement: ASTM A-615, Grade 60, ASTM A-185.
3. Details of internal drop to be similar to NYC Dep. standard detail dwg. #33 & 34.
4. Depth of manhole shall be decided as per actual field verification of final ground elevation.