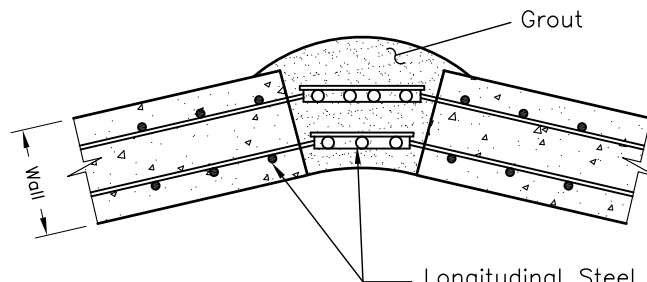


**TWO PIECE ELBOW**



Longitudinal Steel shall be Rejoined and Sufficient Circumferential Steel to be Placed Close Enough to Hold Grout in Place.

**FABRICATION DETAIL**

**GENERAL NOTES:**

1. Pipe Meets the Requirements of A.S.T.M. C-76 (AASHTO M-170)
2. This Drawing is not Intended to Show Reinforcement Design  
Either as to Placement or Steel Area. Consult with  
Manufacturer for Design Information and Details not Shown  
on this Drawing.