

**GENERAL NOTES:**

1. 2EA. GROUND-ROD KNOCK-OUTS NOT SHOWN, LOCATED DIAGONALLY OPPOSING CORNERS.
2. LIFTING DEVICES (NOT SHOWN)
  - 4EA. 4-TON SWIFT LIFTS ON OUTSIDE FACE OF TAPERED FORM
  - 4EA. INSERTS FOR LIFTING, CAST INTO OUTSIDE FACE ON COLLAPSIBLE FORM

NAME PLATE MARKED:  
"M.I.D." & "HIGH VOLTAGE"

48"X78" ADJUSTABLE FRAME  
AND COVER ASSEMBLY  
INCIDENTAL TRAFFIC,  
SLIP-RESISTANT

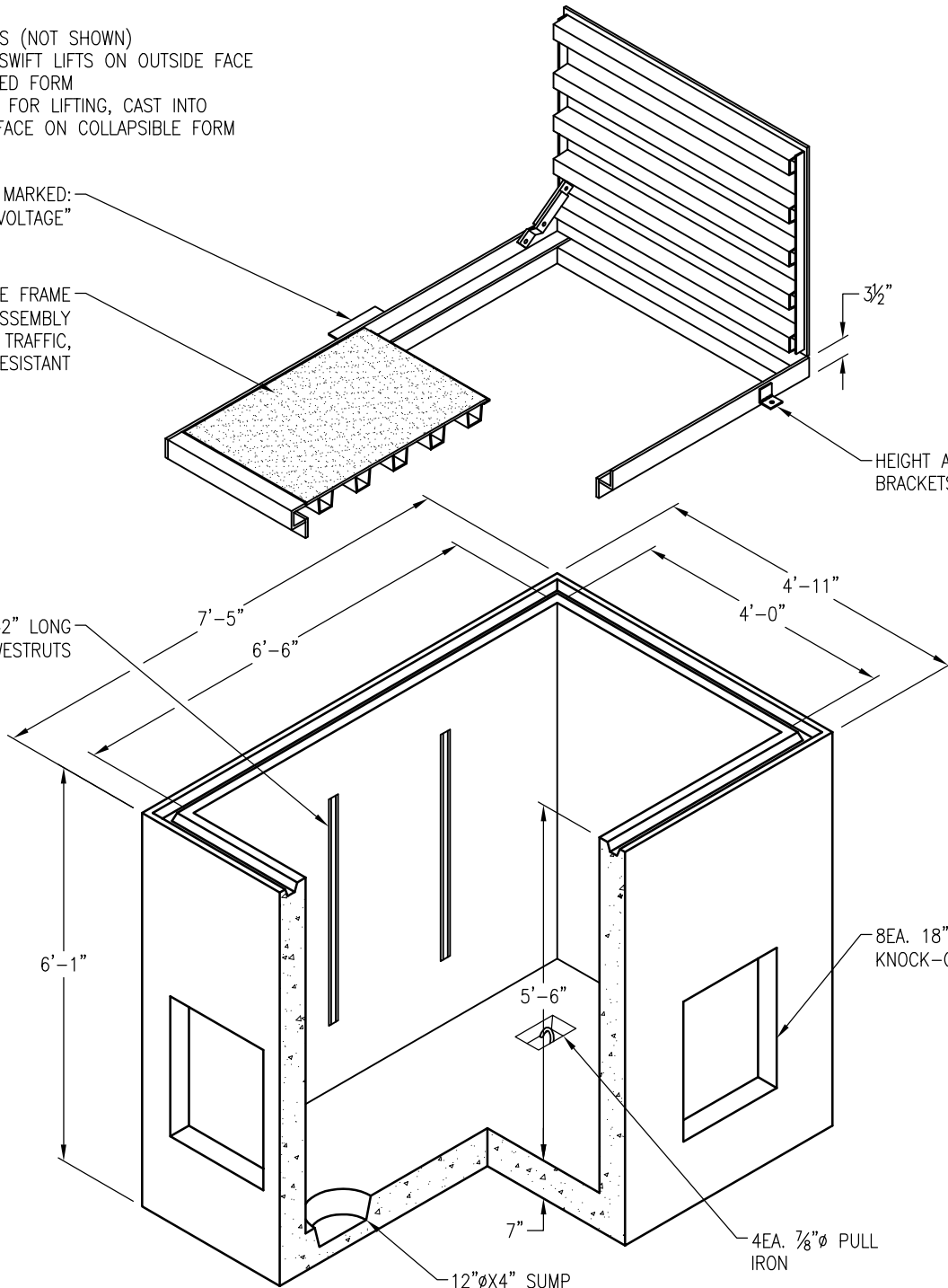
4EA. 42" LONG  
W-7353 WESTRUTS

HEIGHT ADJUSTMENT  
BRACKETS

8EA. 18"X24"  
KNOCK-OUTS

4EA. 7/8"Ø PULL  
IRON

12"ØX4" SUMP



APPROXIMATE WEIGHTS:  
BASE WEIGHT: 12,065 LBS

DRAWING MAY NOT CONFORM TO THE  
MOST CURRENT SPECIFICATION



**Oldcastle Precast**<sup>®</sup>  
Northern California  
Madera ■ Morgan Hill ■ Pleasanton ■ Santa Rosa ■ Stockton ■ Tulare  
Phone: 925-750-6650 Fax: 925-750-6660

<b>MID-4878</b>
FILE NAME: MID-7.DWG
REVISED: MARCH 2016
<a href="http://www.oldcastleprecast.com">www.oldcastleprecast.com</a>

**4'-0" X 6'-6" X 5'-6" (I.D.)  
UTILITY VAULT  
M.I.D.**