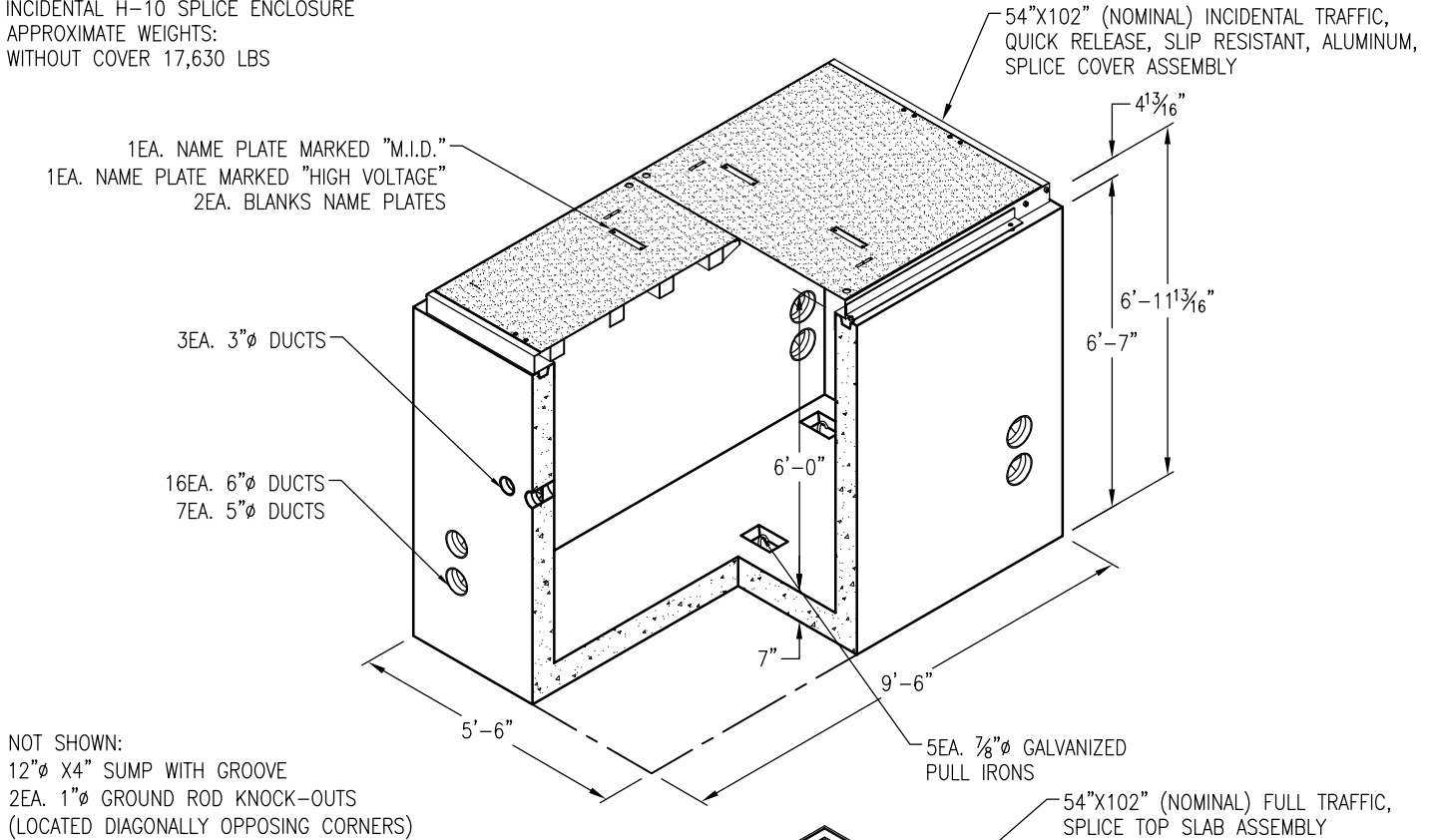


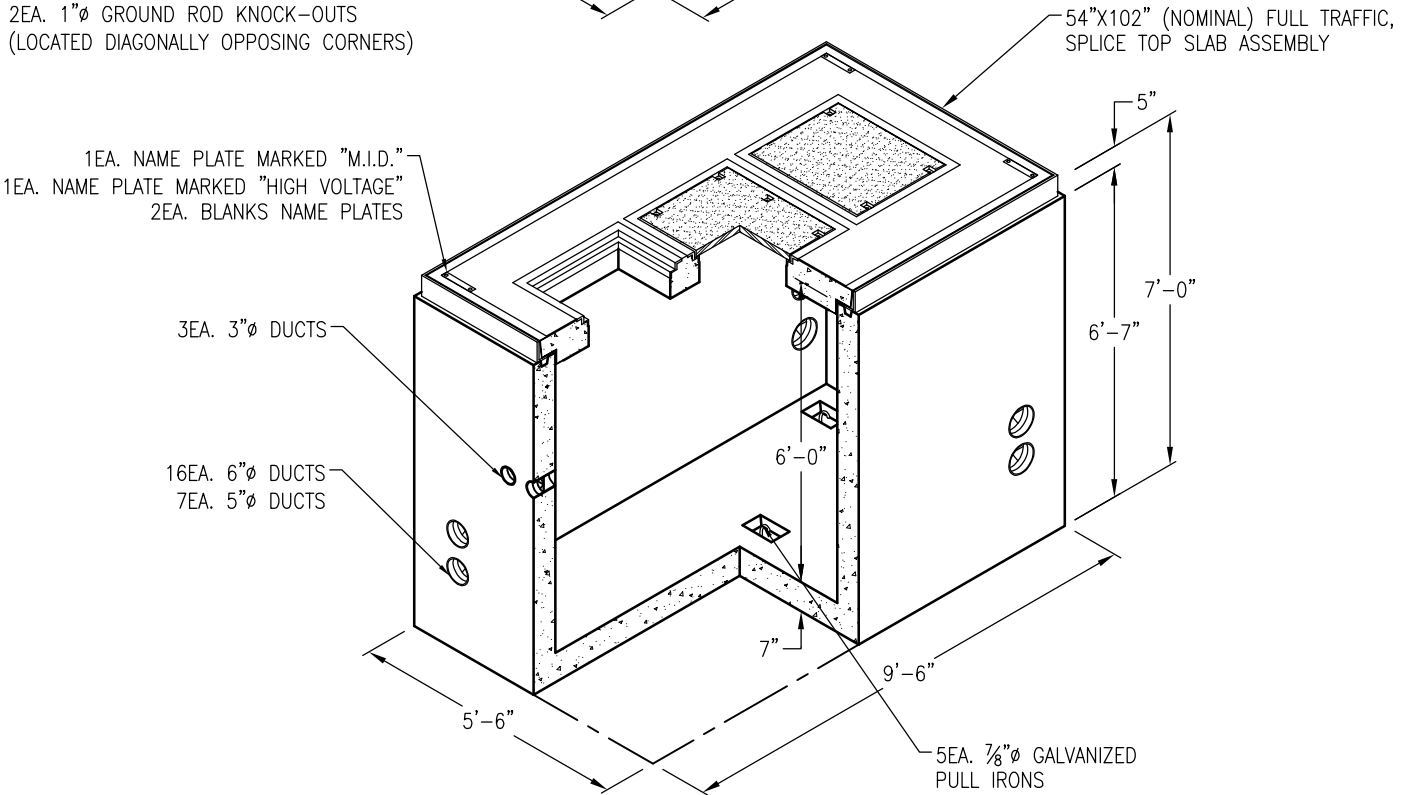
4'-6" X 8'-6" X 6'-0"
 INCIDENTAL H-10 SPLICE ENCLOSURE
 APPROXIMATE WEIGHTS:
 WITHOUT COVER 17,630 LBS



1EA. NAME PLATE MARKED "M.I.D."
 1EA. NAME PLATE MARKED "HIGH VOLTAGE"
 2EA. BLANKS NAME PLATES

3EA. 3" Ø DUCTS
 16EA. 6" Ø DUCTS
 7EA. 5" Ø DUCTS

4'-6" X 8'-6" X 6'-0"
 HEAVY FULL TRAFFIC H-20 SPLICE ENCLOSURE
 APPROXIMATE WEIGHTS:
 WITHOUT COVER 17,630 LBS



DRAWING MAY NOT CONFORM TO THE
 MOST CURRENT SPECIFICATION