

NOT SHOWN:

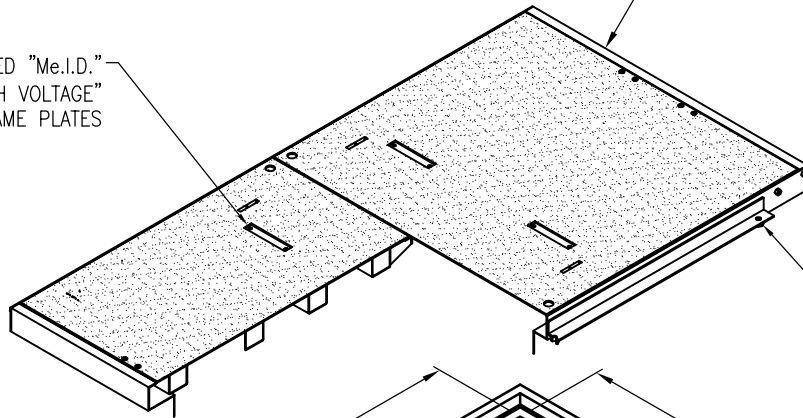
- 2EA. 1"Ø GROUND ROD KNOCK-OUTS
(LOCATED DIAGONALLY OPPOSING CORNERS)
- 2EA. 1/2"Ø BRONZE INSERTS
WITH 3/8" DEEP DEPRESSION

- 1EA. NAME PLATE MARKED "Me.I.D."
- 1EA. NAME PLATE MARKED "HIGH VOLTAGE"
- 2EA. BLANKS NAME PLATES

54"x102" (NOMINAL) INCIDENTAL TRAFFIC, QUICK RELEASE, SLIP RESISTANT, ALUMINUM, SPLICE COVER ASSEMBLY

4 3/16"

HEIGHT ADJUSTMENT BRACKET



8'-6"

4'-6"

4EA. MB79U55 HOOK LIFTS

6'-7"

24EA. 4"Ø DUCTS (ONE STEP GRAY)

4EA. 6"Ø DUCTS

6'-0"

4EA. 18"x18" KNOCK-OUTS

8EA. 5"Ø DUCTS

12"ØX4" SUMP

7"

9'-6"

4EA. 3"Ø DUCTS

5'-6"

5EA. 7/8"Ø GALVANIZED PULL IRONS

APPROXIMATE WEIGHTS:
WITHOUT COVER 17,500 LBS

DRAWING MAY NOT CONFORM TO THE
MOST CURRENT SPECIFICATION

Oldcastle Precast[®]
Northern California
Madera ■ Morgan Hill ■ Pleasanton ■ Santa Rosa ■ Stockton ■ Tulare
Phone: 925-750-6650 Fax: 925-750-6660

MeID-4686
FILE NAME: MEID-4.DWG
REVISED: MARCH 2016
www.oldcastleprecast.com

4'-6" X 8'-6" X 6'-0" (I.D.)
ELECTRIC ENCLOSURE
Me.I.D.