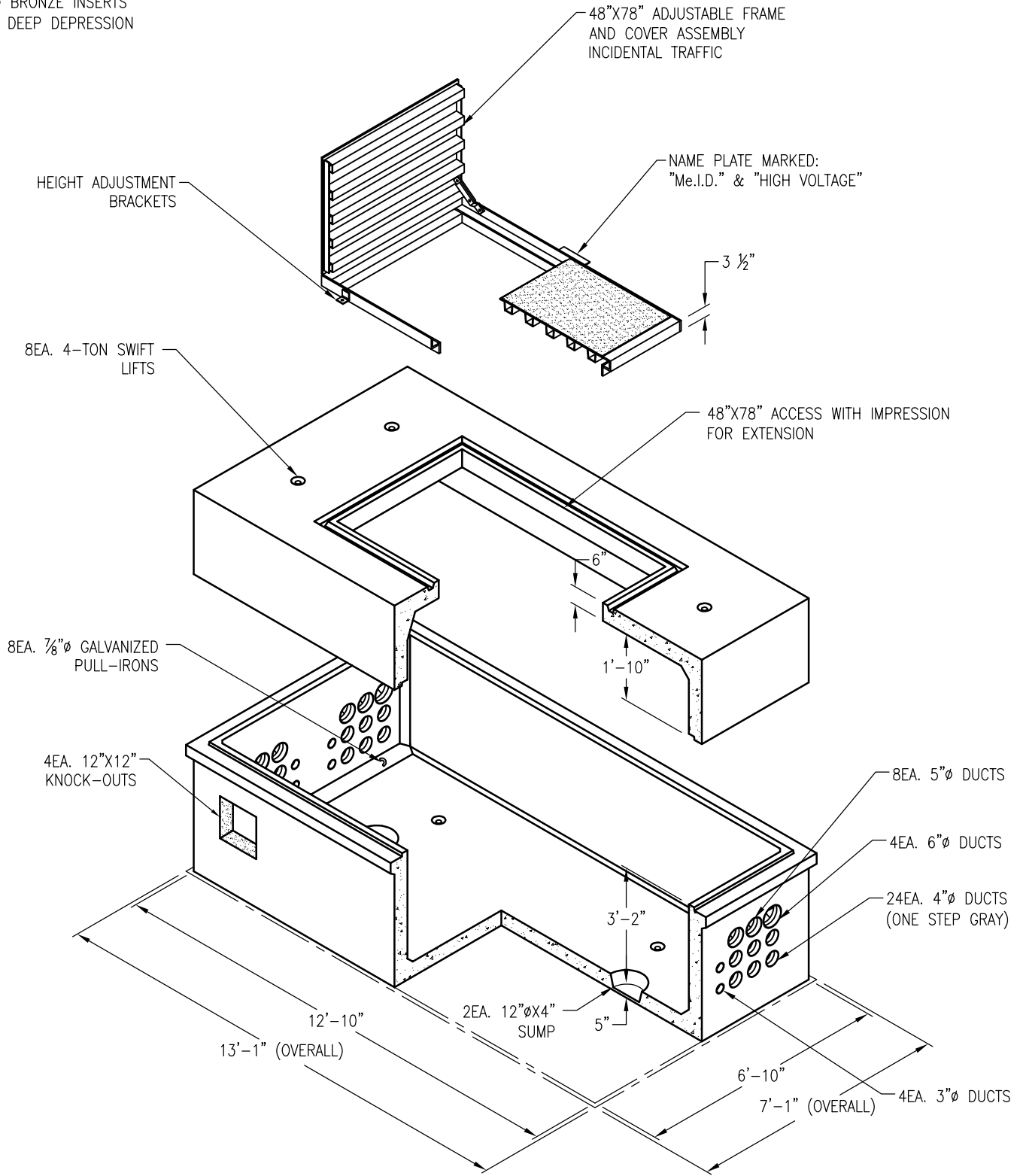


NOT SHOWN:
 2EA. 1"Ø GROUND ROD KNOCK-OUTS
 (LOCATED DIAGONALLY OPPOSING CORNERS)
 4EA. 1/2"Ø BRONZE INSERTS
 WITH 3/8" DEEP DEPRESSION



TOP SECTION WEIGHT: 9,200 LBS.
 BASE SECTION WEIGHT: 14,500 LBS.

DRAWING MAY NOT CONFORM TO THE MOST CURRENT SPECIFICATION

Oldcastle Precast[®]

Northern California
 Madera ■ Morgan Hill ■ Pleasanton ■ Santa Rosa ■ Stockton ■ Tulare
 Phone: 925-750-6650 Fax: 925-750-6660

MeID-6125
FILE NAME: MEID-6.DWG
REVISED: MARCH 2016
www.oldcastleprecast.com

6'-0" X 12'-0" X 5'-0" (I.D.)
 ELECTRIC ENCLOSURE
 Me.I.D.