

MSE Retaining Wall System

SYSTEM OVERVIEW

THE MEGAWALL VALUE

STANDARD BLOCK TYPES

REINFORCEMENT

APPLICATIONS

FEATURES & BENEFITS

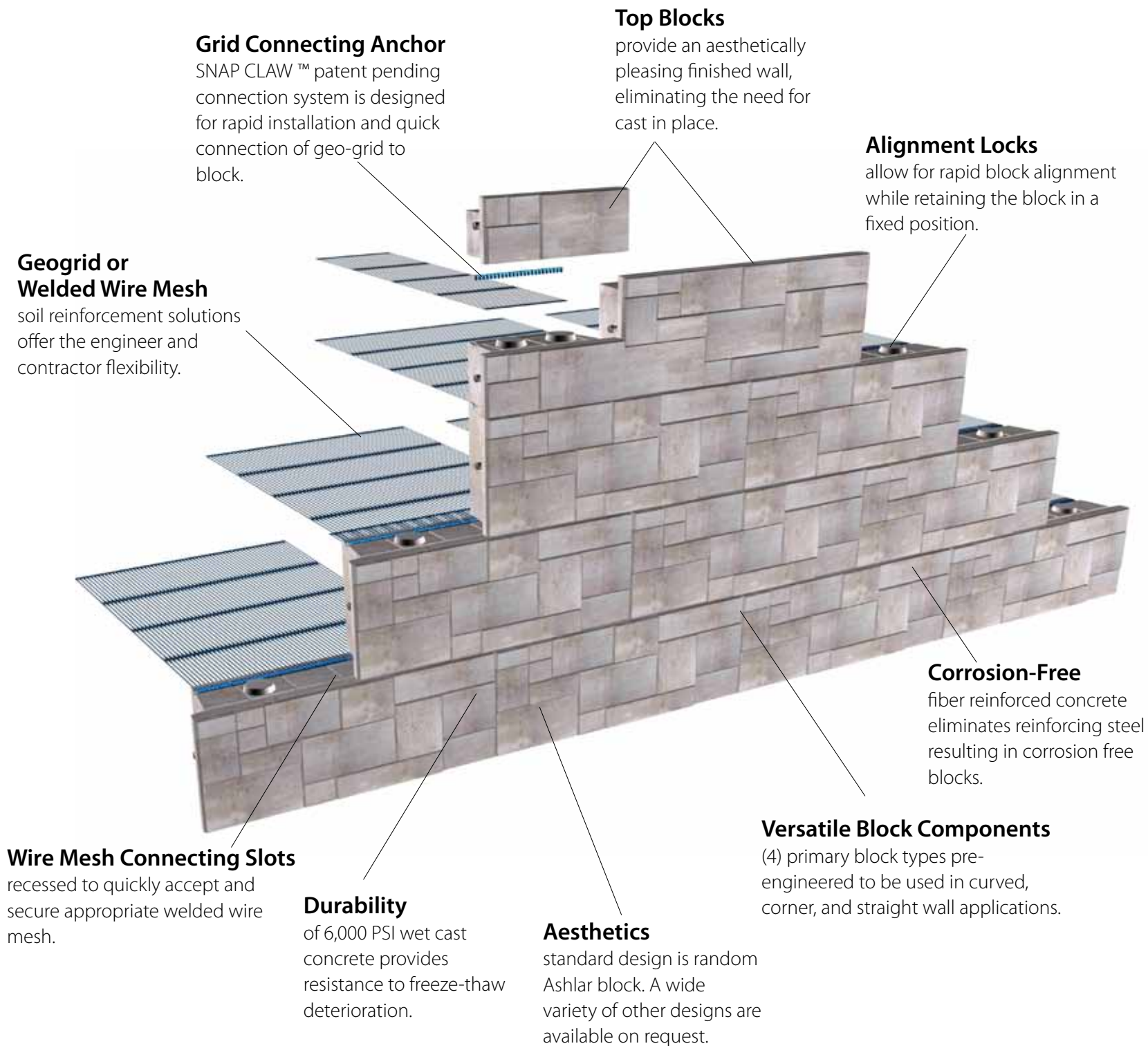


Building on decades of wall manufacturing experience, MegaWall™ MSE combines **easier** planning, **quicker** installation and **better** durability to build **superior** retaining walls.



From the ground up, we are with you every block of the way

MegaWall MSE System



Standard Ashlar Form Liners

Random placement of (3) standard block face patterns eliminates repetition resulting in an authentic appearance.

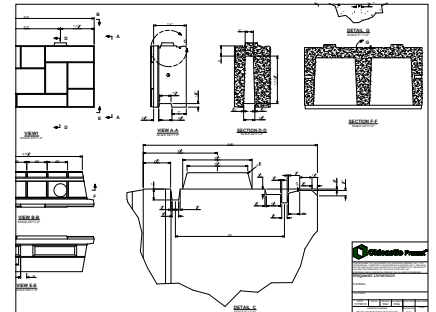


The Value of MegaWall MSE

MegaWall MSE retaining wall systems offer versatility, reliability, and ease of installation to every jobsite, simplifying everything from project design and engineering to installation scheduling.

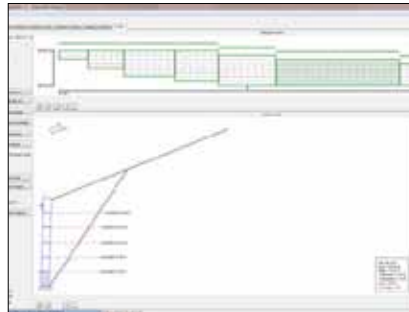
Planning

- Identify best layout and options early-on
- Rough design based on assumed soil properties
Rough materials estimate
- Plan and profile views for public comment or owner review



Design


- NCMA or AASHTO LRFD Design Methodologies
- Internal design program and team=fast response
- Easy plan and profile details for insertion to your plans
- Special wall elements completely detailed
- Outputs for Global Stability Check to be completed by others
- Full system specifications for easy insertion into specification set



Bid

- Design program linked directly to quote; means quick quote turn-around time
- Construction needs to estimate
- Ensure communication and coordination between geotech, civil engineer, and contractor
- Send global outputs to civil engineer for Global Analysis





Olcastle Precast
Delivering Reliability

QUOTATION

Page: _____

Date: _____

Customer: _____

Contact: _____

PROJECT: _____

Phone: _____

Fax: _____

E-Mail: _____

Cell: _____

Reply to: Barry Bauer

678.269.9287

Prices have been quoted prices upon all of the estimated, (not guaranteed) quantities in this quotation. If Buyer elects to purchase from Seller only a portion of the material quoted, Seller shall have the right to adjust the prices to reflect the impact of all resulting cost.

Item No.	Approx. Quantity	Description	Unit Price	Unit	Unit Total
10	2,000	MegaWall M16 retaining wall system, incl: a) MegaWall blocks, 30" tall x 60" wide x 16" deep b) Tensar geogrid for soil reinforcement c) necessary drainage pipe for the wall d) 2" soil separation fabric e) 1 roll vertical seam fabric f) freight g) design	\$17.35	sq	\$34,700

Manufacture

- Manufactured in a controlled environment by Oldcastle Precast
- Quality Control and Mix design tested for consistent results every time
- Standard pieces in stock
- The right material delivered at the right time, every time



Installation

- Final construction details for submittal
- Ensure communication and coordination between geotech, civil engineer, and contractor
- Facilitate fast and correct assembly and installation
- Less jobsite confusion and delay



Standard Blocks

Full Block

Dimensions: 66" x 30" x 16" *
Weight: 2,050 lbs.
Coverage: 13.75 sq ft.
1" Set Back (1:30 batter)



Quarter Block

Dimensions: 33" x 15" x 16.5" *
Weight: 530 lbs.
Coverage: 3.44 sq ft.
.5" Set Back (1:30 batter)



Full Top Block

Dimensions: 66" x 30" x 16" *
Weight: 1,871 lbs.
Coverage: 13.75 sq ft.
1" Set Back (1:30 batter)



Quarter Top Block

Dimensions: 33" x 15" x 16.5" *
Weight: 458 lbs.
Coverage: 3.44 sq ft.
.5" Set Back (1:30 batter)



SNAP CLAW™

3 pcs. per full block
60 pcs. per box
Weight: 60 lbs per box
Material: ABS Plastic



Tensar™ Geogrid

Roll Sizes: 4.36' x 200'/250'
Weight: 87-170 lbs per roll



Welded Wire Mesh

Dimensions: 10" x 10"



* Form liner thickness N.I.

Snap Claw™ Connector

Oldcastle Precast's patent pending grid to block connection system offers many design and installation benefits.

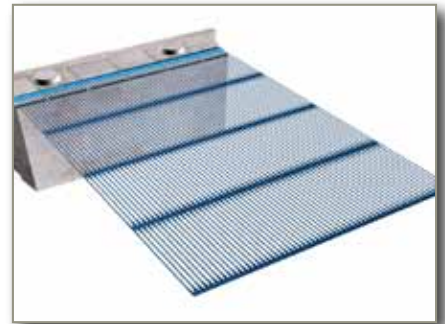
- Exceeds the pull out capacity of the Tensar uniaxial grid
- No metal - made from durable ABS plastic
- No Bodkin connection
- Easy on-site installation



Tensar™ Geogrid

The Tensar geogrid option delivers the most durable soil reinforcing system available.

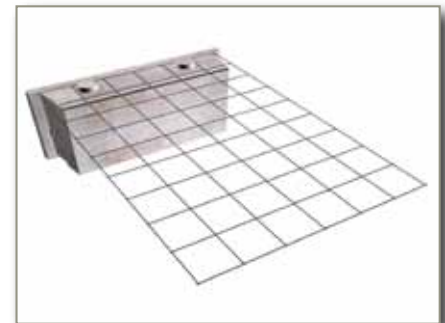
- Manufactured from long lasting HDPE resins
- Resistant to installation damage
- Resists elongation (creep) from heavy loads over time
- Superior junction strength, which allows durable connection to the block



Welded Wire Mesh

Offers a viable solution for taller or specific DOT retaining wall applications.

- Fast Installation
- No connector needed
- Ideal for walls greater than 30' high
- Economic solution in non-corrosive environments



MegaWall Applications

Residential	Architectural, Developments, Home privacy and security
Commercial	Developments, Schools, Parks
Transportation	Highway, DOT, Railway, Bridge, Channels



Features & Benefits

- **Time Saving**- MegaWall MSE systems help you eliminate hassles or liabilities and focus on getting the job done quickly and efficiently. 13.75 SF vs 1 SF small blocks.
- **Durability** - The mechanically stabilized earth reinforcement utilized by MegaWall, ensures a lasting connection and full support of the soil.
- **Stability During Construction** - Facing unit with sufficient mass to resist installation forces. Bracing and clamps are eliminated
- **Sustainability** - The system is maintainable for long term sustainability. Wet cast concrete provides excellent durability against freeze thaw.
- **Variety of Applications** - MegaWall can be utilized in a variety of applications within the Residential, Commercial and Transportation industries.
- **Manufactured** to the rigid standards of the Oldcastle quality control program at Oldcastle facilities around the country.

From the ground up, we are with you every block of the way



www.oldcastleprecast.com

888-965-3227