

MUNICIPAL WATER PRODUCTS OVERVIEW



Oldcastle[®]
Enclosure Solutions





Oldcastle Enclosure Solutions understands what makes your projects successful the right Enclosure, for the right location, for the right application. We are dedicated to providing innovative high quality solutions to meet every application.

PRODUCT MATRIX BY BRAND

Select the appropriate size and shape for your application from our list of available products in each brand.

Brand	Material	Model	Size (LxW)	Shape	Wall Type	Depths	Design Load	Rating
CARSON®	HDPE	510	5" Dia	○	Flared ▤	9"	300 lb/ft²	Ped
		708	6" Dia	○		9"		
		809	7" Dia	○		9"		
		0011	10" Dia	○		10"		
		910	10" Dia	○		10" 18" 20" 36"		
		2200	12" Dia	○		15" 18" 21" 30" 36"		
		1012	10" x 12"	□		6" 10" 16"		
		1015	10" x 15"	□		6" 12"		
		1220	12" x 20"	□		6" 12" 18" 24"		
		1324	13" x 24"	□		12" 15" 24" 30"		
		1419	14" x 19"	□		6" 12" 24"		
		0012	14" x 20"	□		6" 12" 18"		
		1730	17" x 30"	□		12" 15" 18" 24" 36" 48"		
		2436	24" x 36"	□		18" 24" 30" 36" 42" 48" *		
CHRISTY®	Concrete	F08	8" Dia	○	Straight	12"	300 lb/ft²	Ped
		B03	9" x 14"	□		12"		
		B09	10" x 15"	□		12" 24" 36" 48" 60"		
		B12	12" x 18"	□		12" 24" 36" 48" 60"		
		B16	11" x 21"	□		12" 24" 36" 48" 60"		
		B24	18" x 19"	□		12" 24" 36" 48" 60"		
		N30	13" x 24"	□		12"		
		N36	17" x 30"	□		12"		
		N40	22" x 35"	□		12" 24" 36" 48" 60"		
B65	15" x 27"	□	12" 24" 36" 48" 60"					
CARSON®	HDPE with Polymer Concrete Cover	1324	13" x 24"	□	Flared ▤	12" 14" 15" 17"	8,000 lbf	Tier 8
		1730	17" x 30"	□		12" 15" 18" 24" 36"		
		2424	24" x 24"	□		18" 24" 30" 36" 42" 48" *		
		2436	24" x 36"	□		18" 24" 30" 36" 42" 48" *		
		2448	24" x 48"	□		18" 24" 30" 36" 42" 48" *		
		2460	24" x 60"	□		18" 24" 30" 36" 42" 48" *		
		3636	36" x 36"	□		18" 24" 30" 36" 42" 48" *		
		3648	36" x 48"	□		18" 24" 30" 36" 42" 48" *		
3660	36" x 60"	□	18" 24" 30" 36" 42" 48" *					
FIBRELYTE®	Composite	FL08	9" Dia	○	Straight	12" 18" 20" 24" 30"	8,000 lbf	Tier 8
		FL09	10" x 15"	□	Flared ▤	12"		
		FL12	11" x 18"	□	Straight	12"		
		FL30	13" x 24"	□	Flared ▤	12" 18" 20" 24"		
		FL36	17" x 30"	□		12" 18" 20" 24"		
OLDCASTLE FRP	Fiberglass Reinforced Polymer w/ Polymer Concrete Ring	1118	11" x 18"	□	Straight	12" 18"	Medium Duty	Tier 15
		1324	13" x 24"	□	Straight/Flared ▤	12" 18" 24"		
		1419	14" x 19"	□	Flared ▤	18" 24"		
		1730	17" x 30"	□	Straight/Flared ▤	12" 18" 24"		
		2424	24" x 24"	□	Straight	24"		
		2436	24" x 36"	□	Straight/Flared ▤	18" 24" 30" 36" 48"		
		3048	30" x 48"	□		18" 24" 30" 36" 48"		
		3060	30" x 60"	□	Straight	30" 36"		
		3660	36" x 60"	□		24" 30" 36"		
		4872	48" x 72"	□		36" 48"		
		4896	48" x 96"	□		48"		
		1000	10" Dia	○	Flared ▤	18"		
		1800	18" Dia	○		36" 48"		
		2200	22" Dia	○		30"		
		2400	24" Dia	○		36"		
		2700	27" Dia	○		36" 48"		
		3900	39" Dia	○		24" 36" 48" 72"		
		5400	54" Dia	○	Straight	36" 46"		
						Lt/Med Duty	T8 / T15	
						Medium Duty	Tier 15	
						Lt/Med Duty	T8 / T15	
						Medium Duty	Tier 15	

Blue - Stacked Body Units (Stacked body units are currently not rated.) Orange - Extension Units

*Models can be increased by 6" to a height you desire. **Tier 15 Design Load: 15,000 lbf Tier 22 Design Load: 22,500 lbf

PRODUCT MATRIX BY BRAND

Select the appropriate size and shape for your application from our list of available products in each brand.

Brand	Material	Model	Size (LxW)	Shape	Wall Type	Depths	Design Load	Rating		
SYNERTECH®	Composite	Duo 11x18	11" x 18"	□	Straight	12" 18" 24" 30" 36"	15,000 lbf	Tier 15		
		Duo 12x12	12" x 12"	□		12" 18" 24" 30" 36"				
		Duo 13x24	13" x 24"	□		12" 18" 24" 30" 36" 42"				
		Duo 17x30	17" x 30"	□		12" 18" 24" 30" 36" 42"				
		Duo 24x36	24" x 36"	□		18" 24" 36" 42" 48" 60"	22,500 lbf	Tier 22		
		Duo 30x48	30" x 48"	□		18" 24" 36" 42" 48" 60"				
		Duo 36x60	36" x 60"	□		24" 36" 48" 60" 72"				
OLDCASTLE POLYMER <i>(formerly H-Series™)</i>	Polymer	910	9" Dia	○	Flared ▤	10"	**	T15 / 22		
		1118	11" x 18"	□	Straight	12" 18" 24"	8,000	T8		
		1212	12" x 12"	□		12" 24" 36"				
		1324	13" x 24"	□		12" 15" 18" 24" 30"	**	T15 / 22		
		1730	17" x 30"	□		12" 18" 24" 30" 36"	**	T15 / 22		
		2424	24" x 24"	□		24" 36" 48" 60"	**	Tier 15 / 22		
		2436	24" x 36"	□		18" 24" 36" 42"				
		3048	30" x 48"	□		18" 24" 36" 42" 48"				
		3060	30" x 60"	□		24" 30" 36" 48"				
		3636	36" x 36"	□		36" 48" 72" 84" 96"				
4848	48" x 48"	□	36" 48" 72" 84" 96"							
CHRISTY®	Concrete	G03	10" Dia	○	Straight	12"			16,000 lbf	N/A
		G04	11" Tri	○		12"				
		G05	11" Dia	○		12" 24" 36"				
		G08	11" Dia	○		12" 24" 36"				
		G12	13" Dia	○		12"				
		B1017	10" x 17"	□		12" 24" 36"				
		B1324	13" x 24"	□		12" 24" 36"				
		B1730	17" x 30"	□		12" 24" 36"				
		B2436	24" x 36"	□		12" 24" 36"				
		B3048	30" x 48"	□		12" 24" 36"				
CARSON®	Polyethylene	0015	15" Dia	○	Straight	14" 18" 24" 30" 36" 48"	20K	N/A		
		0018	18" Dia	○		14" 18" 24" 30" 36" 48" 60"				
		0020	20" Dia	○		14" 20" 24" 30" 36" 42" 44" 48" 64" 72"				
		0021	21" Dia	○		36" 48"				
		0024	24" Dia	○		18" 24" 30" 36" 48" 55"				
		0030	30" Dia	○		18" 24" 30" 36" 40" 51"				
		0036	36" Dia	○		24" 30" 36" 48"				
		0018 Ext	18" Dia	○		3" 6" 12" 22"				
		0020 Ext	20" Dia	○		2" 3" 4" 6" 7" 8" 12" 15" 22"				
		0024 Ext	24" Dia	○		3" 12"				
		0030 Ext	30" Dia	○		3"				
		0036 Ext	36" Dia	○		3"				
		1015	10" x 15"	□		Straight/Flared ▤			12" 18" 24"	
		1118	11" x 18"	□	Straight/Flared ▤	12" 15" 18" 21" 24" 26"				
		1324	13" x 24"	□	Straight/Flared ▤	12" 18"				
		1416	14" x 16"	□	Straight	12"				
		1527	15" x 27"	□		12" 18" 36"				
		1730	17" x 30"	□		Straight/Flared ▤	12" 18" 24" 30"			

Blue - Stacked Body Units (Stacked body units are currently not rated.) Orange - Extension Units

*Models can be increased by 6" to a height you desire. **Tier 15 Design Load: 15,000 lbf Tier 22 Design Load: 22,500 lbf

CARSON® HDPE PLASTIC

Modify in the field with a standard hole saw or jig saw.



LIGHT DUTY
PEDESTRIAN / GREENBELT

Carson® TrussT meter boxes are value-engineered to achieve top-down strength for lasting access to water systems. Sidewalls feature “truss” reinforcements to withstand passing pressure from push-mowers, domestic riding mowers, and other do-it-yourself equipment.

Carson products are made of structural foam high-density polyethylene with UV inhibitors to provide a lifetime of consistent performance in a variety of weather conditions.

Round boxes feature our Twist-Lock Lid to resist mower suction, which helps preserve the lid and prevent costly damage to mower blades.



COMMON SIZES & STYLES



Truss-T Models: 0708, 0011, 1015, 0012



Spec Grade Models: 0809, 0910, 1419, 1220, 1520, 1324, 1730



LIGHT DUTY
PEDESTRIAN / GREENBELT



TRAFFIC RATED
AASHTO H20

Our Christy® concrete products provide reliable, cost-effective solutions to protect underground components. Concrete is suitable for a range of uses due to its proven compressive strength and durability. Heavy lids are unaffected by commercial mower suction, and the rolled Plastic Cap edge helps prevent blade strikes. Concrete lids also resist puncture damage from commercial aerators. The large throat diameter permits quick, easy valve adjustments. The Christy brand is spec-approved for a number of municipalities and cities throughout the United States.

With a steel cover and steel frame, these concrete boxes are suited for deliberate roadway traffic. Unique locking grade rings assure permanence and quality of surface grades when streets are re-paved. Careful engineering reduces the danger of lid “pop-out” in high traffic areas; bolt down is recommended.

Models with a steel frame and steel cover are approved for use in areas of deliberate traffic.

BOLT-DOWN PROVISIONS
built into the body for added security.

NON-SETTLING SHOULDERS
to maintain grade and facilitate backfilling.

RANGE OF SIZES
available up to 30"W x 60"L.

RELIABLE PHYSICAL PROPERTIES
for a wide range of uses.

- Chemical resistance
- Withstands freeze/thaw conditions
- Non-Flammable

PLASTIC CAP
only available with Oldcastle products.

- Resists chipping when the lid is removed and reinstalled
- Etched pattern allows traction for pedestrian traffic
- Clean, finished look when installed in concrete and pavement

MOUSEHOLES AND KNOCK-OUTS
for ease of modification in the field.

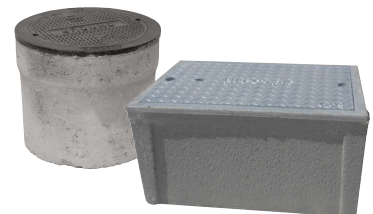
COMMON CATEGORIES



Curb Valve Boxes



Meter Boxes



Traffic Rated Curb Valve Boxes & Meter Boxes

OLDCASTLE POLYMER

Modify in the field with a diamond-tipped hole saw.



MEDIUM DUTY
ANSI/SCTE TIER 8 AND 15



HEAVY DUTY
ANSI/SCTE TIER 22

Oldcastle Polymer is an increasingly popular alternative to traditional concrete for utility infrastructure. Polymer concrete is produced with a precise mix of aggregate and resin, reinforced by a fiberglass cloth. The resulting boxes are lighter weight than similar-sized concrete boxes, yet offer greater performance strength with improved chip resistance.

These characteristics allow Oldcastle Polymer products to withstand incidental traffic from light and medium-duty trucks*, while also tolerating shipping and handling stress.

* Select Oldcastle Polymer models meet ANSI/SCTE 77 standards for Tier 15 and Tier 22 load ratings.



COMMON SIZES



1118



1324



1730



2436



3048

FIBRELYTE® COMPOSITE

Modify in the field with a standard hole saw or jig saw.



Fibrelyte™ meter boxes are engineered for a greater strength-to-weight ratio than plastic products. Ideal for turf and walkway applications, Fibrelyte Enclosures are capable of withstanding incidental traffic from vehicles, such as light trucks.*

Fibrelyte boxes achieve greater load capacity than similar plastic sizes. Plus, the durable composite material of intertwined glass fibers maintains comparable weight as similar plastic sizes. This allows installers to utilize the same resources for handling and cutting Fibrelyte boxes as needed for plastic boxes.

* All Fibrelyte units meet ANSI/SCTE 77 standards for the Tier 8 load ratings.



Select Lids & Bodies Available in Green, Grey and Purple

COMMON SIZES



FL08



FL09



FL12



FL30



FL36

SYNERTECH® COMPOSITE

Modify in the field with a standard hole saw or jig saw.

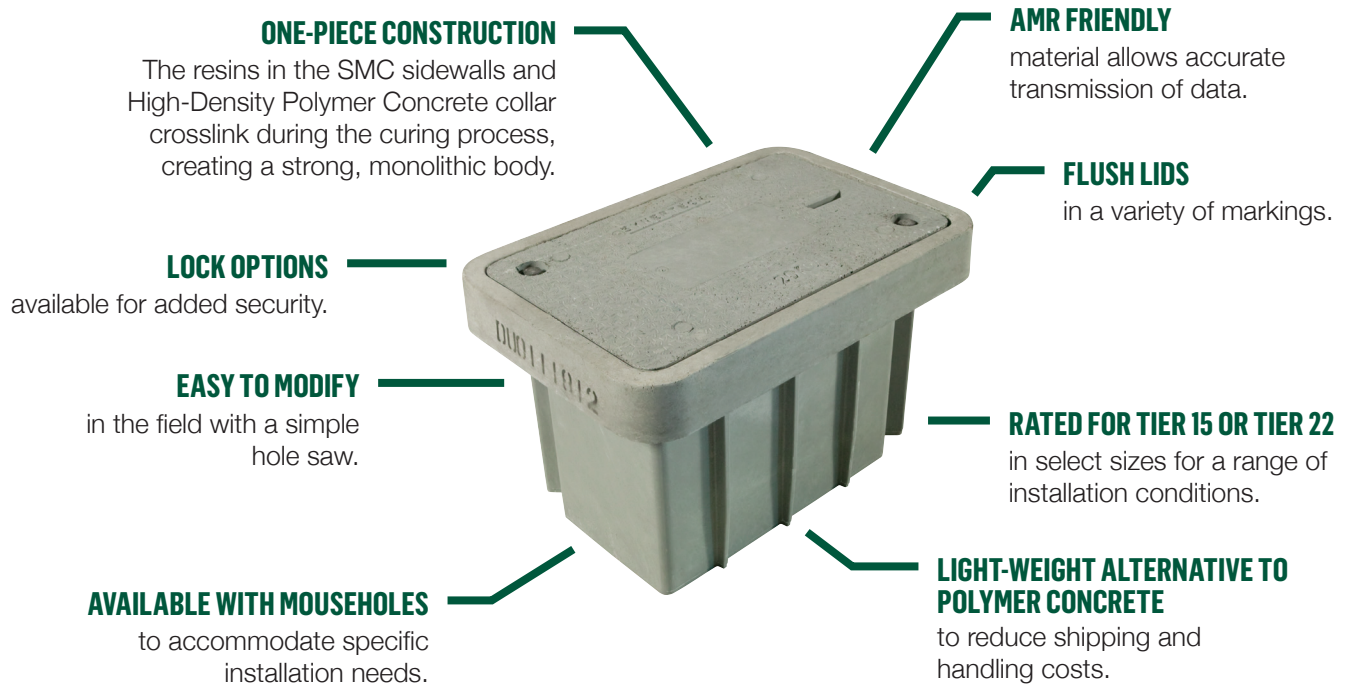


Our Synertech™ products solve key concerns for both specifiers and installers with a unique combination of two durable composite materials.

Our patented Duo-Mold production process bonds a high-density polymer concrete lid collar with glass fiber composite walls, forming a one-piece Synertech body. Paired with a Synertech high-density polymer concrete lid, select units are suitable for incidental traffic from light and heavy trucks.* Ideal for use in spaces maintained with tractor mowers and utility vehicles.

Specifiers can meet expected load rating requirements, while installers can more easily handle and modify Synertech units compared to similar concrete and polymer concrete units. The composite sidewalls allow minimal weight for ease of shipping and handling.

* Synertech units meet ANSI/SCTE 77 standards for tier 15 and tier 22 load ratings.



Compliant with NIOSH lifting requirements in sizes 1730 and smaller

COMMON SIZES



1118



1324



1730



2436



3048

CARSON® HEAVYWALL METER BOXES

Modify in the field with a standard hole saw or jig saw.



Carson Heavywall meter boxes are a lightweight alternative to concrete. Made using our Structural Foam molding process and designed to exceed 20,000 lb vertical load (20K); these boxes also providing the Best in Class lateral load rating of any plastic box on the market today. Extra wide shoulders beneath the lid seat as well as increased footer on the bottom provide the largest amount of anti-settling surface area of any meter box on the market today.

Our BC style has a flared wall, while our BCF design includes straight walls and a paving flange. These boxes are available in a variety of sizes and heights and are engineered to accept all types of covers: including Iron, Plastic, Composite, Steel, Polymer Concrete, and Heavy duty Plastic.



COMMON SIZES & STYLES



BCF: 1015, 1118, 1416, 1324, 1527, 1730



BC: 1015, 1118, 1324, 1416, 1730



Oval: 10"x15" and 10"x20"

CARSON® HEAVYWALL METER PITS

Modify in the field with a standard hole saw or jig saw.



Carson Heavywall meter pits offer high strength and durability. These pits feature an easily modifiable and lightweight wall structure with a patented white interior. Available in diameters from 15" to 36" with a wide range of depths, the product is ideal for cold weather applications. A bottom anti-settling flange prevents sinking in soft soil conditions.

Wall orientations include straight, flared, and tapered. Our line of Bullet boxes provide extra interior room ideal for dual meter, backflow, and larger meter applications.

A complete line of extensions—in both flat and grade leveling orientations—and accessories, such as Thermo-pak to prevent freezing, make the Carson Heavywall meter pit an ideal solution for many municipalities.

PATENTED WHITE INTERIOR

Offers improved working visibility.

STYLE CHOICE

Straight, Flared, Tapered, or Bullet.

CAST IRON COVERS AND RINGS

are available in a variety of sizes.



CUSTOM OPTIONS AND ACCESSORIES

- Extensions
- Grade Rings
- Thermo-pak
- Interior Wall Coloring

MOUSEHOLES & KNOCKOUTS

to accommodate many pipe configurations.

ANTI-SETTLING FLANGE

prevents sinking in soft soil conditions.

COMMON SIZES & STYLES



Round: 15" to 36" Diameter



Bullet: 18" and 20" Diameter Opening

OLDCASTLE FRP FIBERGLASS REINFORCED POLYMER



MEDIUM DUTY
ANSI/SCTE TIER 15



HEAVY DUTY
ANSI/SCTE TIER 22

The Oldcastle FRP Family of enclosures are produced in a unique hybrid process bonding strong, polymer concrete rings with high impact resistant fiberglass sidewalls, forming a monolithic body. Paired with polymer concrete lid, select units are suitable for light or heavy incidental traffic. Specifiers can meet expected load ratings while installers can handle and modify with ease.

Oldcastle FRP offers straight and flared wall bodies. Our line of enclosures provide the interior room needed for large meter applications and check valves.

Oldcastle FRP is manufactured using a spray up method with even layers of fiberglass strand sand resins that are applied onto the mold. After being rolled to remove trapped air, we reinforce the enclosure with woven cloth applied between layers. This process ensures our high impact resistance and durability.

MARKING OPTIONS

Flush cover polymer concrete lids available in multiple marking options, including custom marking opportunities.

HARDWARE, ACCESSORIES & SECURITY

Available accessories such as cable racking and hooks as well as diverse hardware options providing various levels of security.

MONOLITHIC DESIGN

Fiberglass resin sidewalls paired with a polymer concrete ring crosslink during the curing process creating a strong body.

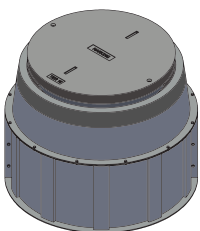
HIGH-IMPACT RESISTANT SIDEWALL FABRICATION

Even layers of fiberglass strand resin applied and reinforced with woven cloth, making this product exceptionally strong and high quality performance.

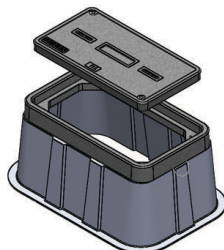
EASILY FIELD MODIFIABLE

Add mouseholes and knockouts in the field with ease. Common tools and bits to make simple field modifications.

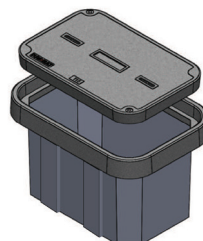
COMMON SIZES & STYLES



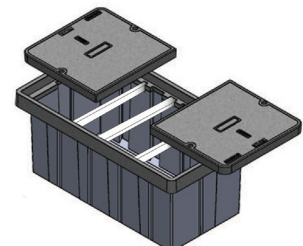
Round: 10" Dia., 54" Dia



Flared Wall: 1324, 1730, 2436, 3048



Straight Wall: 1324, 1730, 2436, 3048, 3060, 3660, 4872



PERFORMANCE LEVEL AND LOAD RATINGS



LIGHT DUTY: PEDESTRIAN / GREENBELT APPLICATIONS

Class Vehicle	GVW (lb)	Max Wheel Load (lb)	Design Load	Test Load	Specification	Load Category
Pedestrian	-	-	300 lb/ft	-	ASTM C 857	A-0.3
Pedestrian	-	-	-	3000 lbf	ANSI/SCTE 77	Light Duty, Pedestrian
Pedestrian	-	-	850 lb	2200 lb	Telcordia GR-902	Greenway
Passenger Vehicle	6000	2400	2000lbf	4340 lbf	WUC, Guide 3.6	Ped.Greenway

MEDIUM DUTY: ANSI/SCTE TIER 5, 8, AND 15

Class Vehicle	GVW (lb)	Max Wheel Load (lb)	Design Load	Test Load	Specification	Load Category
Light Duty Truck up to Class 3	1400	5600	5000	7500	ANSI/SCTE 77	Tier 5
			8000	12000		Tier 8
			3900	10400	Telcordia GR-902	Pedestrian/Light Duty Incidental
Medium Duty Truck up to Class 5	19500	7800	7800	20800	Telcordia GR-902	Non-Continuous Traffic
			8000	17360	ASTM C 857	A-8
			8000	17360	WUC, Guide 3.6	Non-Continuous Traffic
Medium Duty Truck up to Class 7	33000	13200	15000	22500	ANSI/SCTE 77	Tier 15

HEAVY DUTY: ANSI/SCTE TIER 22

Class Vehicle	GVW (lb)	Max Wheel Load (lb)	Design Load	Test Load	Specification	Load Category
Heavy Duty Truck up to Class 8	40000	16000	16000	34720	ASTM C 857	A-16
			22500	33750	ANSI/SCTE 77	Tier 22
			16000	16000	WUC, Guide 3.6	In shoulder or parking area outside traffic lane

TRAFFIC RATED: AASHTO H20*

Class Vehicle	GVW (lb)	Max Wheel Load (lb)	Design Load	Test Load	Specification	Load Category
Vehicles up to Class 8	40000	16000	16000	34720	ASTM C 857	A-16

*Units must include a steel frame and steel cover.

Load Ratings are determined by the lowest component rating

The Rural Utility Service (RUS) is a department of the US Department of Agriculture organized to facilitate rural developments. You will find Oldcastle Enclosure Solutions brand Enclosures listed by the RUS. Please reference brand specific product data sheets for additional clarifications. All Oldcastle Enclosure Solutions brand Enclosures conform to the RUS "Tamper Resistant" fastener design for buried pedestals found listed by code and group.

The "Test Load" term is used in ANSI/SCTE 77-2010 to designate the minimum load that an Enclosure must be able to sustain to qualify for a particular performance rating. The term is synonymous with (minimum) Failure Load. It should be noted that within the ANSI/SCTE 77-2010 specification, the "Test Load" is 1.5 x the Design Load. Some specification and Operating Companies select a higher multiple or Safety Factor for Proof of Design Load.



Oldcastle®
Enclosure Solutions

Count on Oldcastle Enclosure Solutions to deliver reliable, high-performance products to allow for a safer and more successful project.



FOR MORE INFORMATION CALL

(877) 250-5139



VISIT OUR WEBSITE

OldcastleEnclosures.com

At Oldcastle Enclosure Solutions, we understand what makes your projects successful — the right enclosure, for the right location, for the right application. That's why we're dedicated to providing innovative, high-quality solutions to meet every application and the reliable service to back it up.

We leverage our footprint and manufacturing portfolio of the world's leading brands in grade-level utility boxes to create optimal solutions for Electrical, Communications, Water and Irrigation markets.

We believe our solutions do more than simply support infrastructure, that our solutions keep our communities running strong.

The information provided in this document is intended for informational purposes only and is subject to change without notice. Oldcastle may also make improvements and/or changes in the products, described in this information at any time without notice. Revision 5/2018