

NOTE  
 Inside Height as Specified  
 Inside Roof, Floor and Side Wall Openings as Specified  
 Maximum Height of Wall Per Piece 8'-0"



**Oldcastle Precast**®

**UV10X20RC**

FILE NAME: 322UCPMH10X20RC\_ISO.DWG

ISSUE DATE: January, 2008

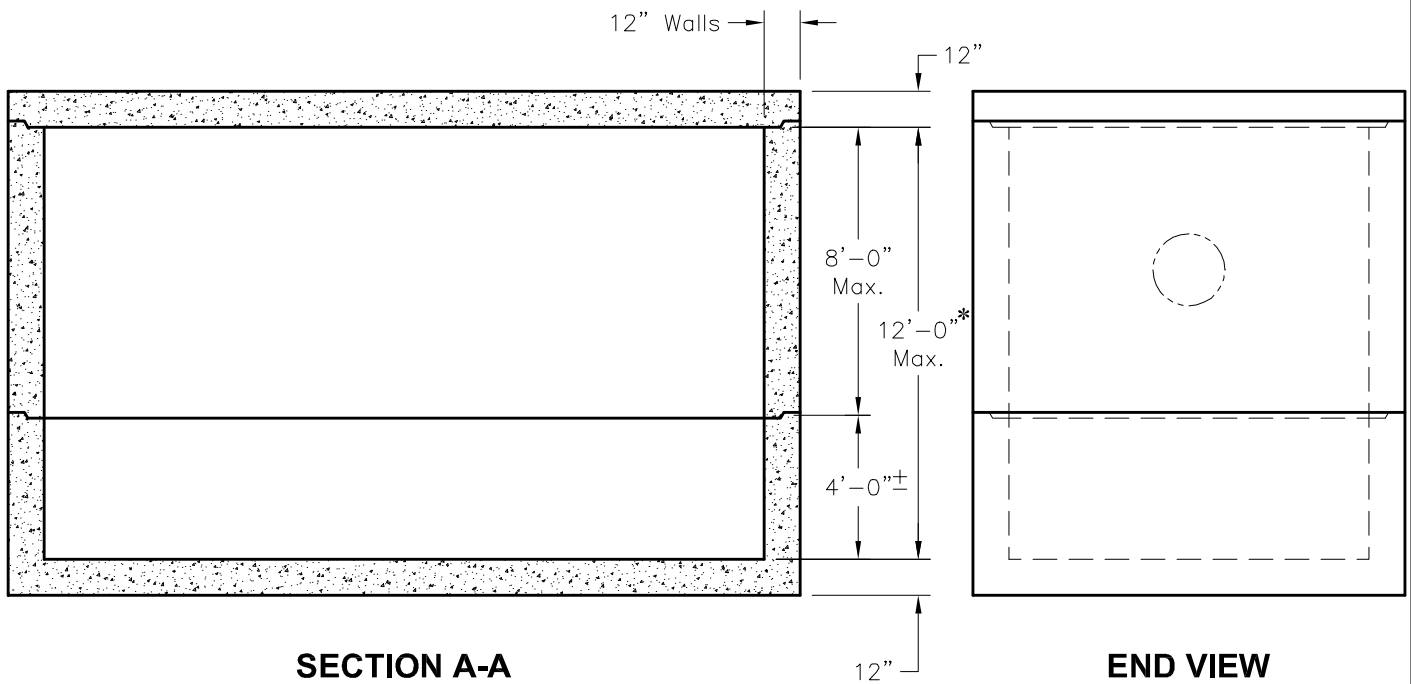
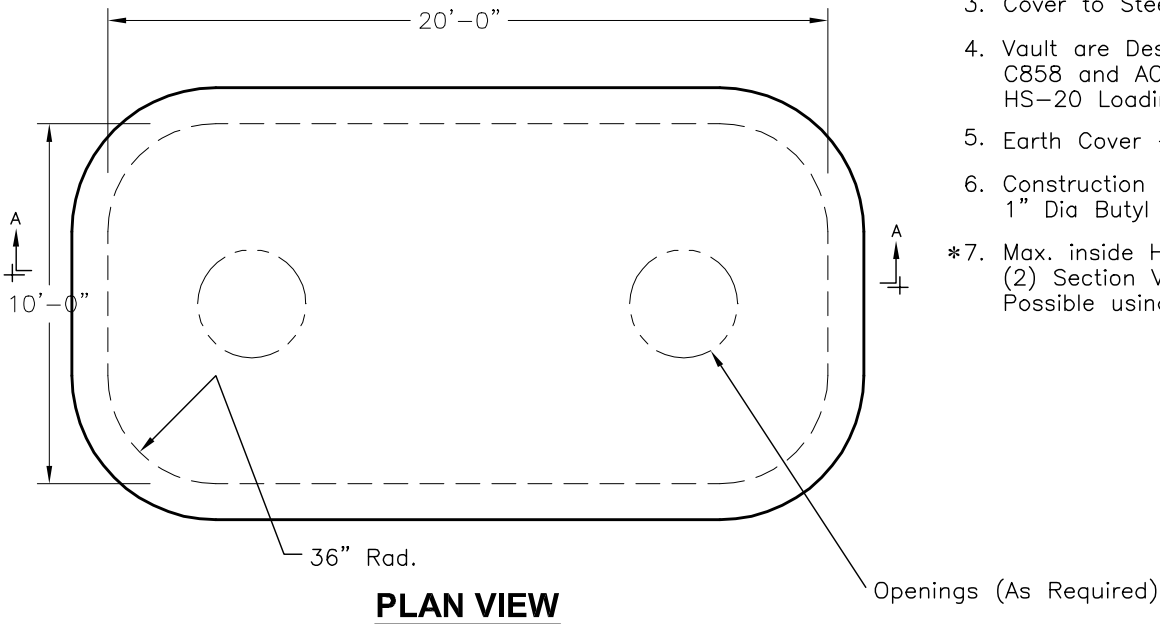
[www.oldcastleprecast.com](http://www.oldcastleprecast.com)

**10'-0" x 20'-0" x Variable I.D.  
 Round Corner  
 Pump Station**

Copyright © 2008 Oldcastle Precast

**NOTES:**

1. Concrete: 5,000 P.S.I  
Minimum Strength @ 28 Days
2. Steel Reinforcing – ASTM A-615,  
Grade 60.
3. Cover to Steel – 1"
4. Vault are Designed to Meet ASTM  
C858 and ACI 318 with AASHTO  
HS-20 Loading
5. Earth Cover – 0 to 5 Feet Max.
6. Construction Joint–Sealed with  
1" Dia Butyl Rubber or Equivalent
- \*7. Max. inside Height Based on  
(2) Section Vault. Additional Height  
Possible using Multiple Sections.



**UV10X20RC**

FILE NAME: 322UCPMH10X20RC\_DET.DWG

ISSUE DATE: January, 2008

[www.oldcastleprecast.com](http://www.oldcastleprecast.com)

**10-0" x 20'-0" x Variable I.D.  
Rounded Corner  
Pump Station**

Copyright © 2008 Oldcastle Precast