

**Oldcastle Precast**<sup>®</sup>

**DB-9 w/access**

FILE NAME: 324ESDDB-9\_ISO.DWG

ISSUE DATE: January, 2008

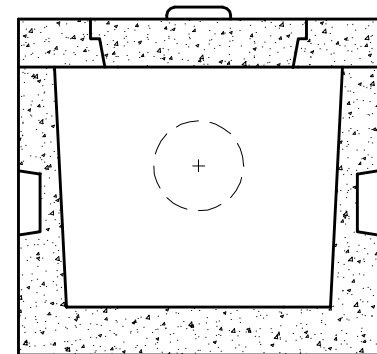
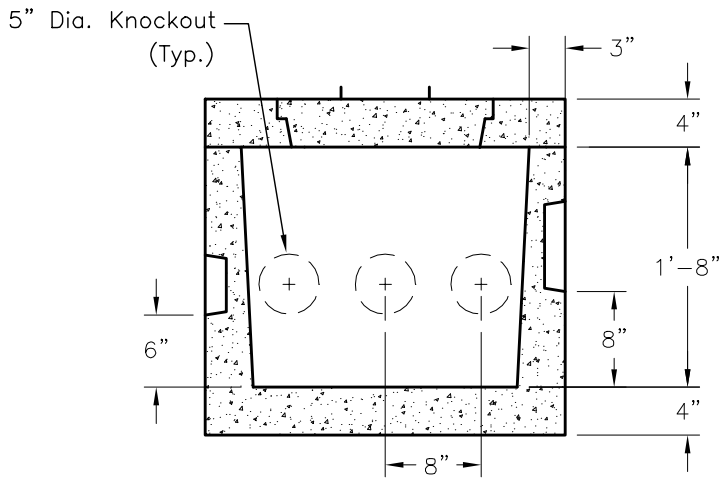
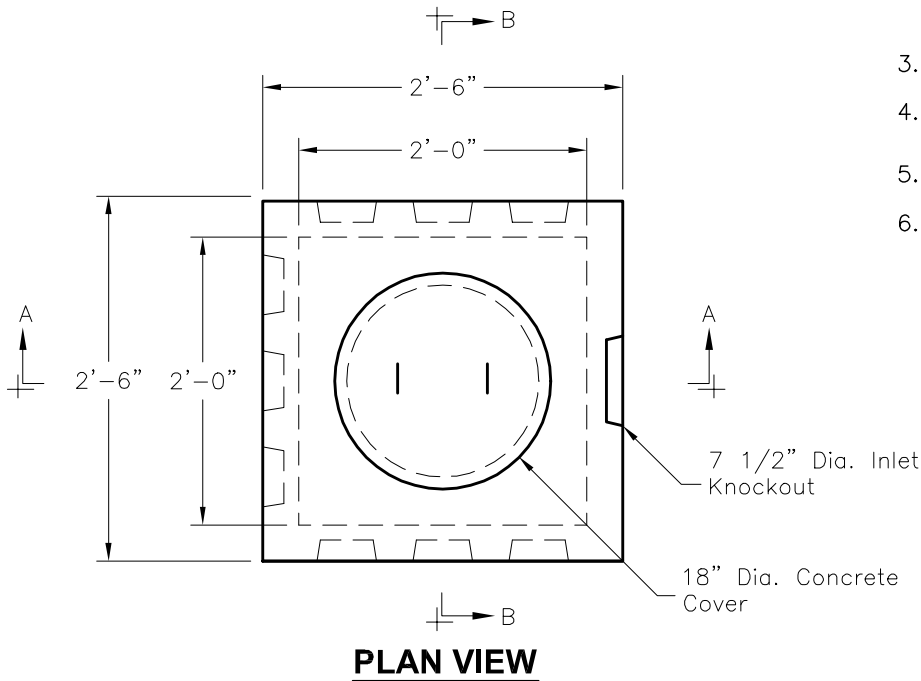
[www.oldcastleprecast.com](http://www.oldcastleprecast.com)

**2'-0" x 2'-0" x 1'-8" I.D.  
9 Outlet D-Box  
Weight 1375 Lbs.**

Copyright © 2008 **Oldcastle Precast**<sup>®</sup>

**NOTES:**

1. Concrete : 4,000 P.S.I  
Minimum Strength @ 28 Days
2. Steel Reinforcing- ASTM A-615,  
Grade 60.
3. Cover to Steel-1" Minimum
4. Designed Loading-HS-20
5. Earth Cover 1'-5' Max.
6. Approx. Wt. = 0.7 TONS  
(1375 lb.)



**DB-9 w/access**

FILE NAME: 324ESDDB-9\_DET.DWG

ISSUE DATE: January, 2008

[www.oldcastleprecast.com](http://www.oldcastleprecast.com)

**2'-0" x 2'-0" x 1'-8" I.D.  
9 Outlet D-Box  
Weight 1375 Lbs.**

Copyright © 2008 **Oldcastle Precast**