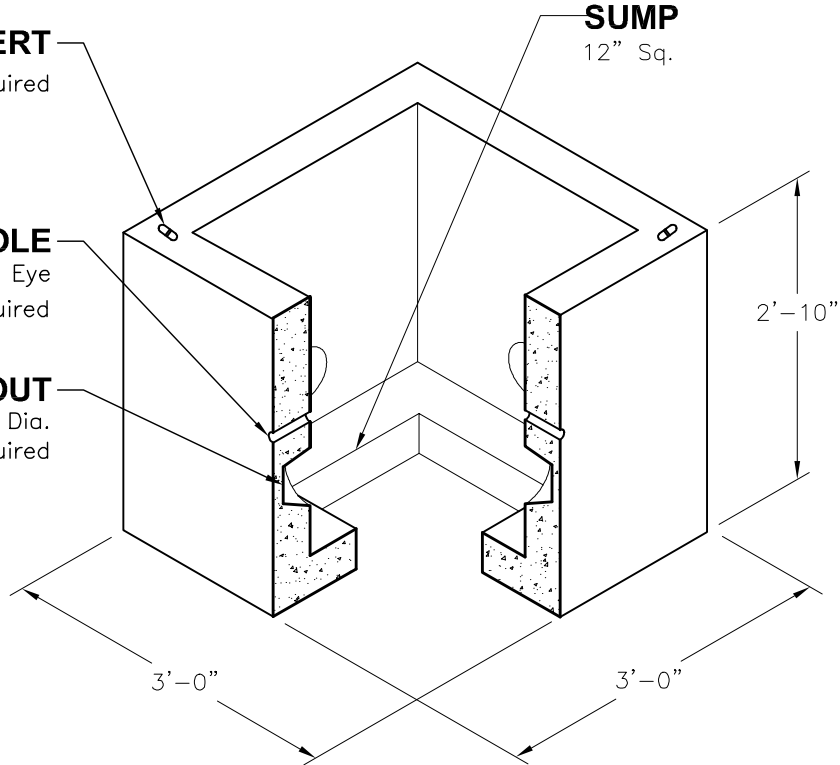


**LIFTING INSERT**  
(2) Required

**1" DIA. HOLE**  
For Pulling Eye  
(4) Required

**KNOCKOUT**  
4" Dia.  
(4) Required

**SUMP**  
12" Sq.



**Oldcastle Precast**<sup>®</sup>

**HH2424-6**

FILE NAME: 325UEHH2424-6\_ISO.DWG

ISSUE DATE: January, 2008

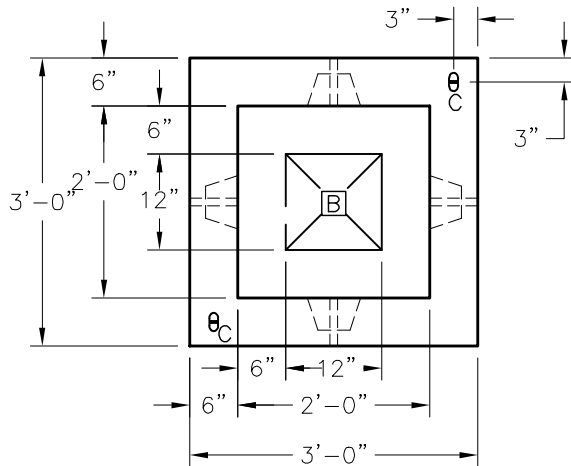
[www.oldcastleprecast.com](http://www.oldcastleprecast.com)

**2'-0" x 2'-0" x 2'-4" I.D.**  
**Handhole**  
**MHD Standard**  
**2,500 Lbs**

Copyright © 2008 **Oldcastle Precast**<sup>®</sup>

GENERAL NOTES:

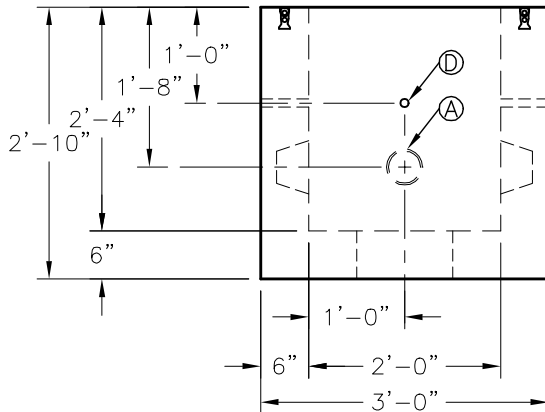
1. Concrete: 28 Day Compressive Strength  $f'_c = 5,000$  psi. Type III.
2. Rebar: Grade 60 Per ASTM A615.
3. General Contractor to Verify all Openings Sizes and Locations.
4. 12" x 12" Square Sump (1) Place (As Shown).
5. H-20



**PLAN VIEW**

DATA CHART

LTR	QTY	Description
(A)	4	4" Dia. Knockout
(B)	1	12" x 12" Sump
C	2	Lifting Insert
(D)	4	1" Dia. Hole (For Pulling Eye)



**ELEVATION**

Typical 4 Sides



**HH 2424-6**

FILE NAME: 325UEHH2424-6\_DET.DWG

ISSUE DATE: January, 2008

[www.oldcastleprecast.com](http://www.oldcastleprecast.com)

**2'-0" x 2'-0" x 2'-4" I.D.  
Handhole  
MHD Standard  
2,500 Lbs**

Copyright © 2008 Oldcastle Precast