

**ST 1500ATC**

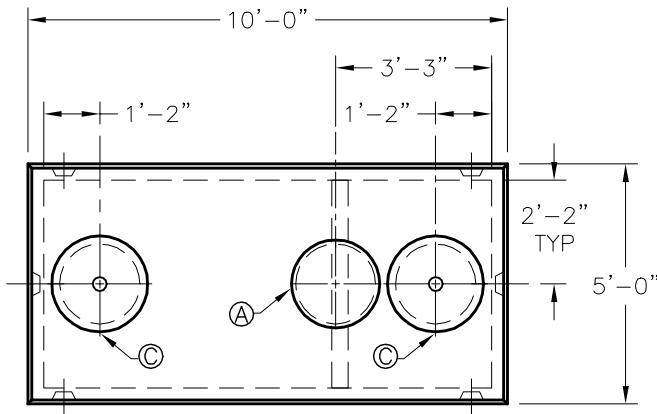
FILE NAME: 325ESRST1500A\_ISO.DWG

ISSUE DATE: January, 2008

[www.oldcastleprecast.com](http://www.oldcastleprecast.com)

**4'-6" x 9'-6" x 5'-11" I.D.**  
**Two Compartment(H-10)**  
**1,500 Gallon Capacity**  
**12,000 Lbs**

Copyright © 2008 **Oldcastle Precast**



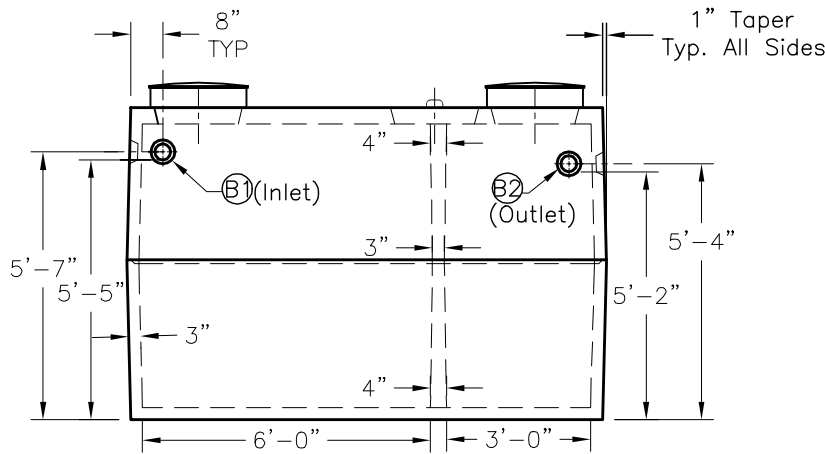
**PLAN VIEW**

GENERAL NOTES:

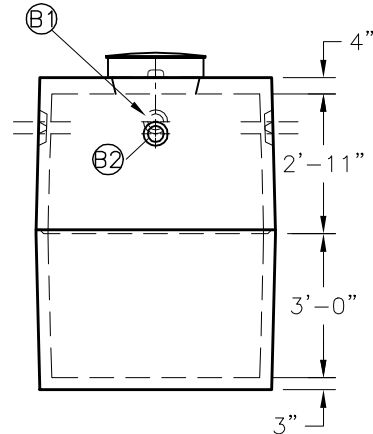
1. Concrete: 28 Day Compressive Strength  $f'_c = 5,000$  psi. Type III.
2. Rebar: Grade 60 Per ASTM A615.
3. Design Loading: H-10.
4. General Contractor to Verify all Openings Sizes and Locations.
5. All Pipe and Roof Openings have Additional Rebar Reinforcement.
6. Joint to be Sealed with 1" Butyl Rubber.

DATA CHART

LTR	QTY	Description
(A)	1	20" $\phi$ Cleanout
(B1)	3	4" $\phi$ Polylock (Inlet)
(B2)	3	4" $\phi$ Polylock (Outlet)
(C)	2	24" $\phi$ Plastic Riser w/Cover



**ELEVATION VIEW**



**END VIEW**



**ST 1500ATC**

FILE NAME: 325ESRST1500A\_DET.DWG

ISSUE DATE: January, 2008

[www.oldcastleprecast.com](http://www.oldcastleprecast.com)

**4'-6" x 9'-6" x 5'-11" I.D.  
Two Compartment(H-10)  
1,500 Gallon Capacity  
12,000 Lbs**

Copyright © 2008 **Oldcastle** Precast