

**TOP**  
6.1 Tons

**BOTTOM**  
8.0 Tons

11'-0"

6'-0"

8'-8"



**Oldcastle Precast**<sup>®</sup>

**CST-2500**

FILE NAME: 324ESCCST2500\_ISO.DWG

ISSUE DATE: January, 2008

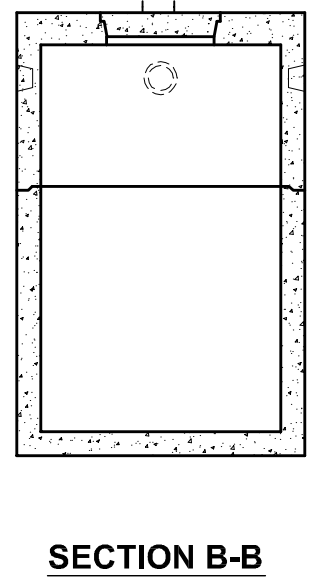
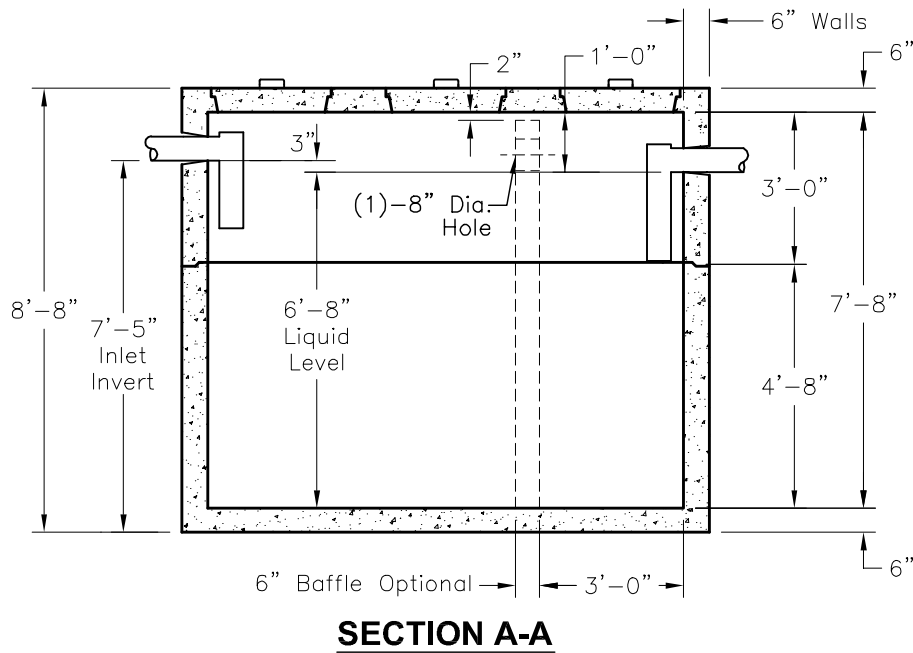
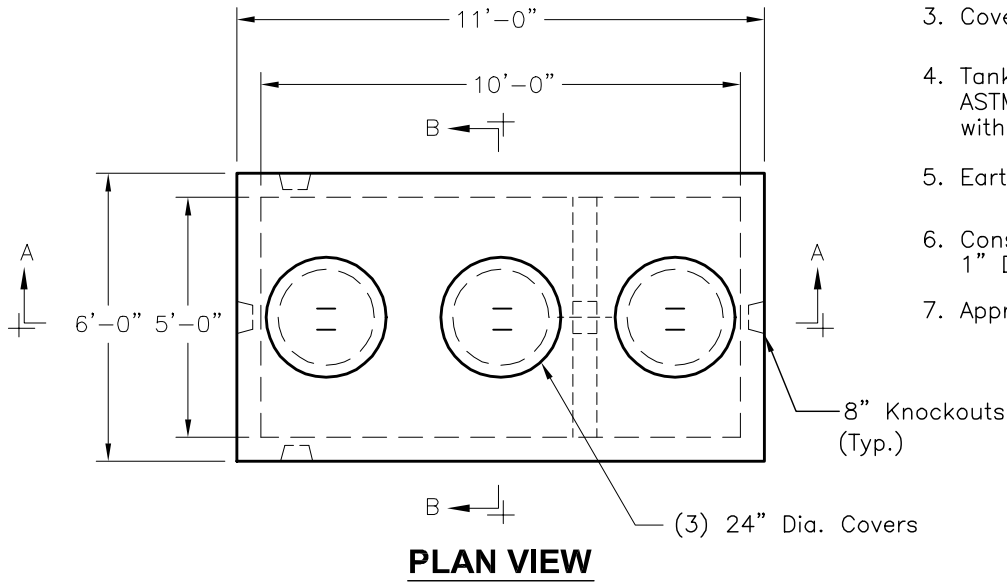
[www.oldcastleprecast.com](http://www.oldcastleprecast.com)

**5'-0" x 10'-0" x 7'-8" I.D.**  
**Septic Tank**  
**2,500 Gallon Capacity**

Copyright © 2008 **Oldcastle Precast**<sup>®</sup>

DESIGN NOTES:

1. Concrete: 5,000 P.S.I  
Minimum Strength @ 28 Days
2. Steel Reinforcement: ASTM A-615,  
Grade 60.
3. Cover to Steel-1" Minimum
4. Tanks are Designed to Meet  
ASTM C858 and ACI 318  
with AASHTO HS-20 Loading
5. Earth Cover-0 to 5 Feet Max.
6. Construction Joint-Sealed with  
1" Dia. Butyl Rubber or Equivalent
7. Approx. Wts: Top Section=6.1 Tons  
Bottom Section= 8.0 Tons



**CST-2500**

FILE NAME: 324ESCCST2500\_DET.DWG

ISSUE DATE: January, 2008

[www.oldcastleprecast.com](http://www.oldcastleprecast.com)

**5'-0" x 10'-0" x 7'-8" I.D.  
Septic Tank  
2,500 Gallon Capacity**

Copyright © 2008 **Oldcastle Precast**