

Oldcastle Precast[®]

GT-1000

FILE NAME: 324ECGGT1000_ISO.DWG

ISSUE DATE: January, 2008

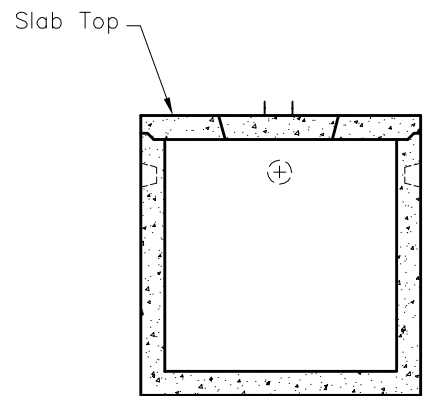
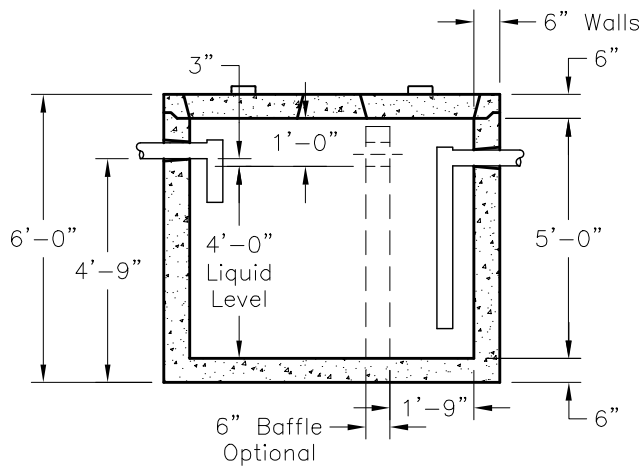
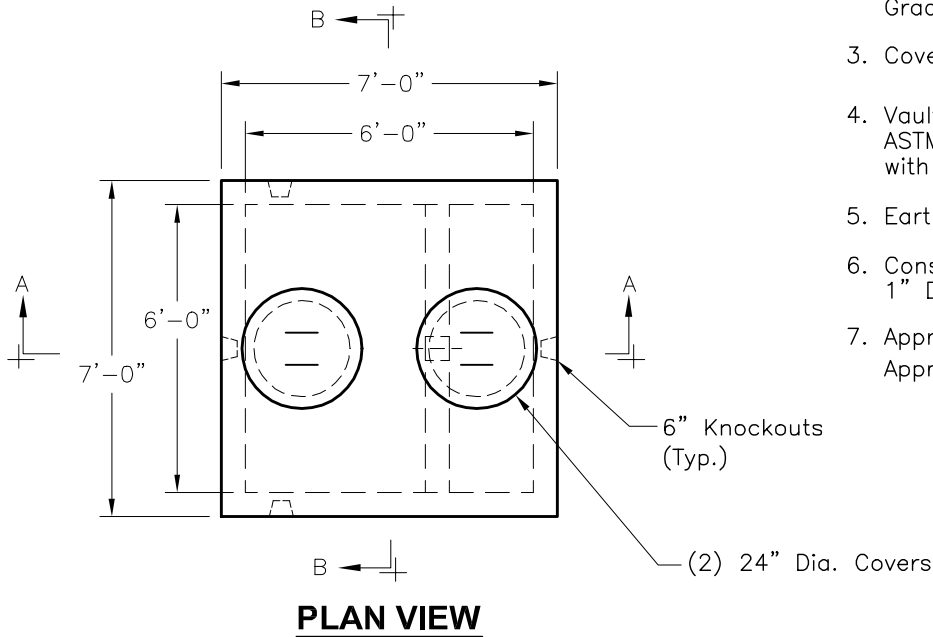
www.oldcastleprecast.com

6'-0" x 6'-0" x 5'-0" I.D.
Grease Interceptor
1,000 Gallon Capacity

Copyright © 2008 **Oldcastle Precast**[®]

GENERAL NOTES:

1. Concrete: 28 Day Compressive Strength $f'_c = 5,000$ psi
2. Steel Reinforcement: ASTM A-615, Grade 60
3. Cover to Steel-1" Minimum
4. Vaults are Designed to Meet ASTM C858 and ACI 318 with Aashto HS-20 Loading
5. Earth Cover-0 to 5 Feet Max.
6. Construction Joint Sealed with 1" Dia. Butyl Rubber or Equivalent
7. Approx. Wt. Slab Top = 1.85 Tons
Approx. Wt. Bottom Section = 6.7 Tons



GT-1000

FILE NAME: 324ECGGT1000_DET.DWG

ISSUE DATE: January, 2008

www.oldcastleprecast.com

**6'-0" x 6'-0" x 5'-0" I.D.
Grease Trap
1,000 Gallon Capacity**

Copyright © 2008 **Oldcastle Precast**