

**COVER**  
24" Dia.

**TOP**  
9.5 Tons

8" Dia. Holes  
(2 Req'd) 6'-0"

**BAFFLE**  
1.2 Tons

**BOTTOM**  
5.8 Tons

7'-0"

7'-0"

This print is an example of an o/w separator and is not designed for specific performance ratings. Openings can be modified for specific project requirements.



**Oldcastle Precast**<sup>®</sup>

**OW-1000**

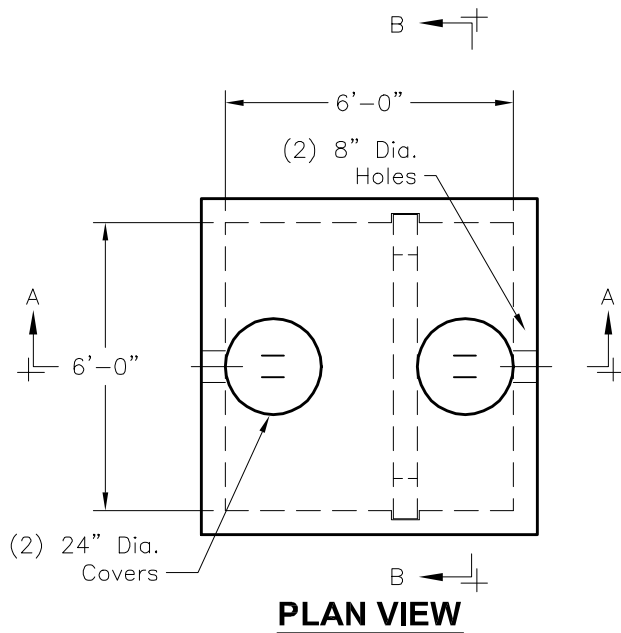
FILE NAME: 324ECOOW-1000\_ISO.DWG

ISSUE DATE: January, 2008

[www.oldcastleprecast.com](http://www.oldcastleprecast.com)

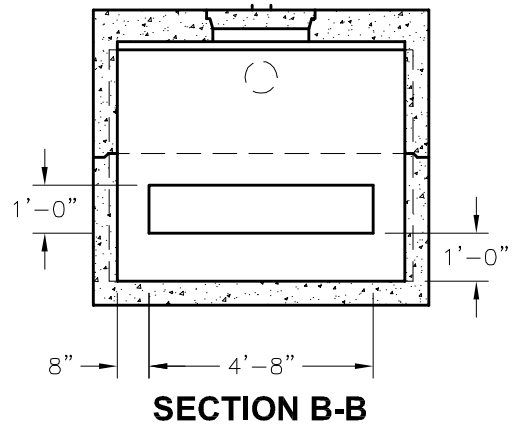
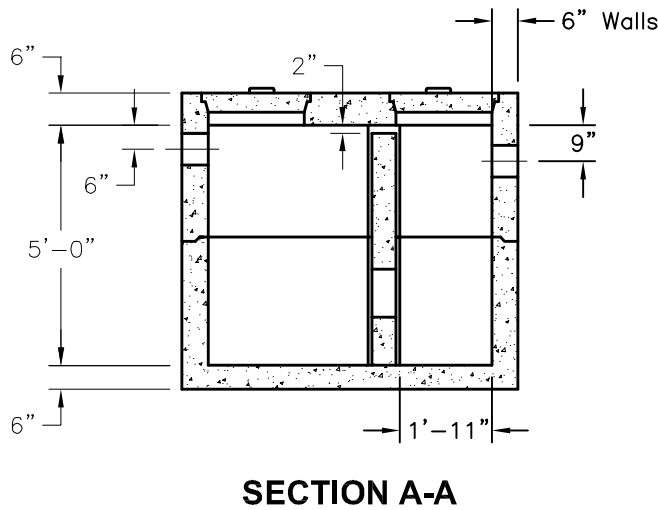
**6'-0" x 6'-0" x 5'-0" I.D.  
Oil/Water Separator  
1,000 Gallon Capacity**

Copyright © 2008 **Oldcastle Precast**<sup>®</sup>



NOTES:

1. Concrete: 5,000 P.S.I.  
Minimum Strength @ 28 Days
2. Steel Reinforcement— ASTM A-615,  
Grade 60.
3. Cover to Steel—1" Minimum
4. Tanks are Designed to Meet ASTM  
C858 and ACI 318 with AASHTO  
HS-20 Loading
5. Earth Cover—0 to 5 Feet  
Minimum
6. Construction Joint—Sealed with  
1" Dia. Butyl Rubber or Equivalent
7. Approx. Wt. Top Pc. = 6.3 Tons  
Approx. Wt. Bottom Pc. = 6.3 Tons
8. This Print is an Example of an O/W  
Separator and is not Designed for  
Specific Performance Ratings.  
Openings can be Modified for  
Specific Project Requirements.



**OW-1000**

FILE NAME: 324ECOOW-1000\_DET.DWG

ISSUE DATE: January, 2008

[www.oldcastleprecast.com](http://www.oldcastleprecast.com)

**6'-0" x 6'-0" x 5'-0" I.D.  
Oil/Water Separator  
1,000 Gallon Capacity**

Copyright © 2008 **Oldcastle Precast**