

NOTE
 Inside Height as Specified
 Inside Roof, Floor and Side Wall Openings as Specified
 Maximum inside Height for 2 Piece Manhole 10'-0"
 Maximum inside Height of Each Additional Piece 5'-0"



MH6X6

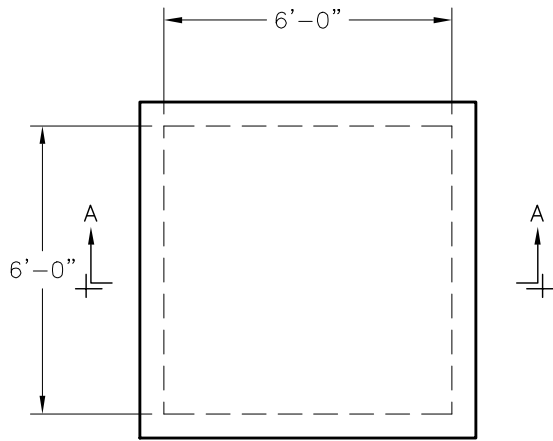
FILE NAME: 324UCPMH6X6_ISO.DWG

ISSUE DATE: January, 2008

www.oldcastleprecast.com

**6'-0" x 6'-0" x Variable I.D.
 Utility Vault**

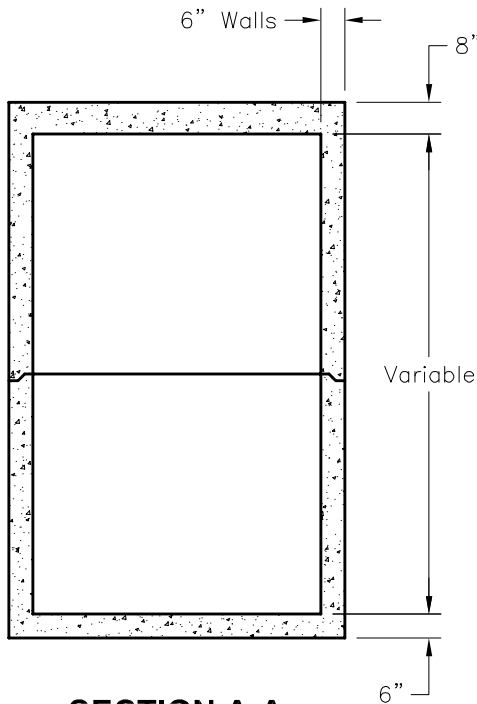
Copyright © 2008 **Oldcastle** Precast



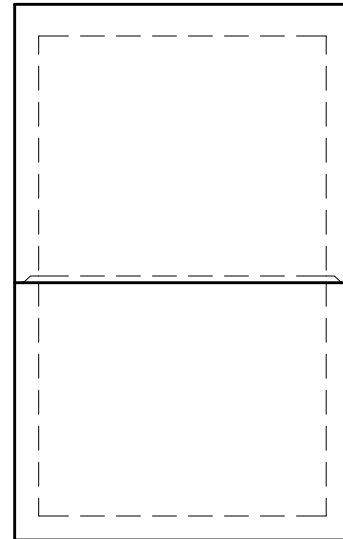
PLAN VIEW

NOTES:

1. Concrete: 5,000 P.S.I
Minimum Strength @ 28 Days
2. Steel Reinforcement – ASTM A-615,
Grade 60
3. Cover to Steel – 1”
4. Vault are Designed to Meet
ASTM C858 and ACI 318
with AASHTO HS-20 Loading
5. Earth Cover – 0 to 5 Feet Max.
6. Construction Joint– Sealed with
1” Dia. Butyl Rubber or Equivalent
7. Wall Thickness Available in 6”, 8”&
10”



SECTION A-A



END VIEW



Oldcastle Precast®

MH6X6

FILE NAME: 324UCPMH6X6_DET.DWG

ISSUE DATE: January, 2008

www.oldcastleprecast.com

**6'-0" x 6'-0" x Variable I.D.
Utility Vault**

Copyright © 2008 **Oldcastle Precast®**