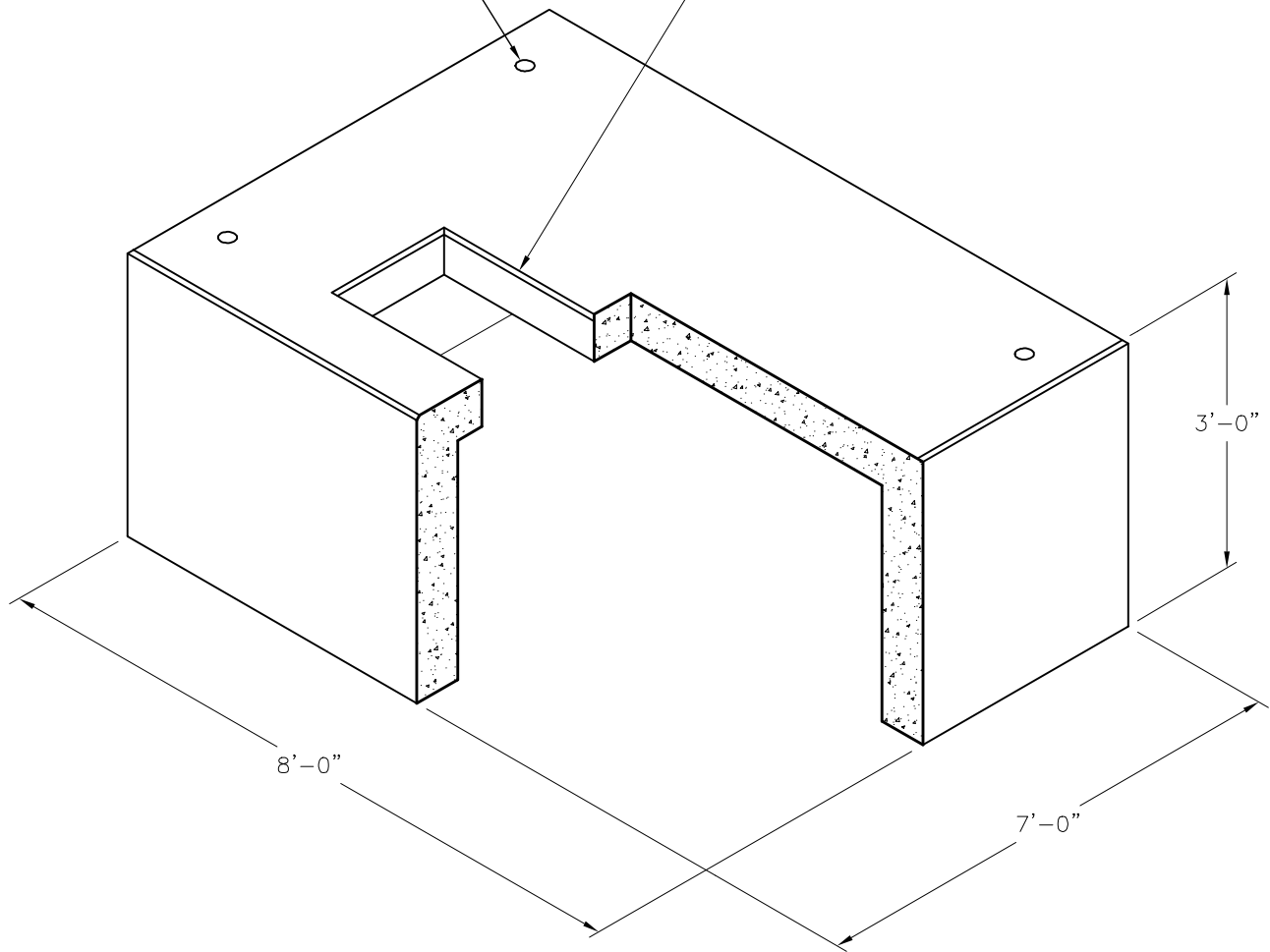


**LIFTING INSERT**  
(4) Required

**ACCESS HOLE**  
1'-6" X 5'-0"



**Oldcastle Precast**<sup>®</sup>

**TPAD 849636**

FILE NAME: 325UETP84\_ISO.DWG

ISSUE DATE: January, 2008

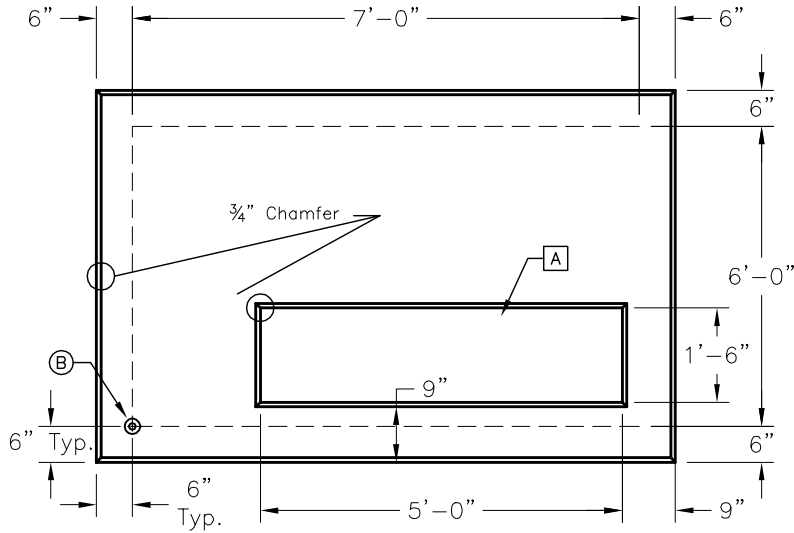
[www.oldcastleprecast.com](http://www.oldcastleprecast.com)

**84" x 96" x 36"**  
**Transformer Box Pad**  
**NGRID**  
**8,900 Lbs**

Copyright © 2008 **Oldcastle Precast**<sup>®</sup>

GENERAL NOTES:

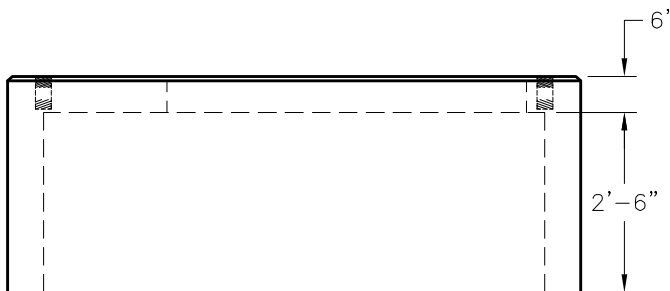
1. Concrete: 28 Day Compressive Strength  $f'_c = 5,000$  psi. Type III.
2. Rebar: Grade 60 Per ASTM A615 (Black)
3. General Contractor to Verify all Openings Sizes and Locations.
4. Additional Reinforcement Around all Openings.
5. Any Hardware Shown But not Dimensioned is for Visual Reference Only Do not Scale for Placement.



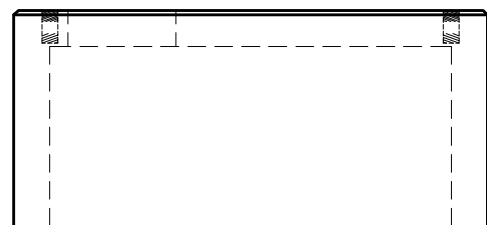
**PLAN VIEW**

DATA CHART

LTR	QTY	Description
[A]	1	1'-6" x 5'-0" Opening
[B]	4	5" Utility Anchors



**ELEVATION VIEW**



**END VIEW**



**TPAD 849636**

FILE NAME: 325UETP84\_DET.DWG

ISSUE DATE: January, 2008

[www.oldcastleprecast.com](http://www.oldcastleprecast.com)

**84" x 96" x 36"**  
**Transformer Box Pad**  
**NGRID**  
**8,900 Lbs**

Copyright © 2008 **Oldcastle Precast**