

**Oldcastle Precast**<sup>®</sup>

**CTR-DBH**

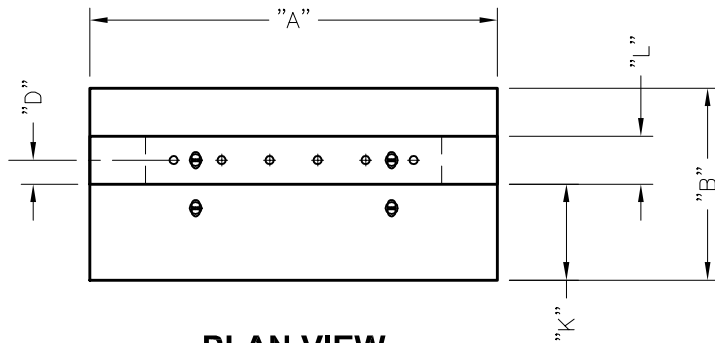
FILE NAME: 325DBH-CTR\_ISO.DWG

ISSUE DATE: January, 2008

[www.oldcastleprecast.com](http://www.oldcastleprecast.com)

**Center Wall**  
**13,000 Lbs.**

Copyright © 2008 **Oldcastle Precast**<sup>®</sup>



**PLAN VIEW**

DIMENSION CHART

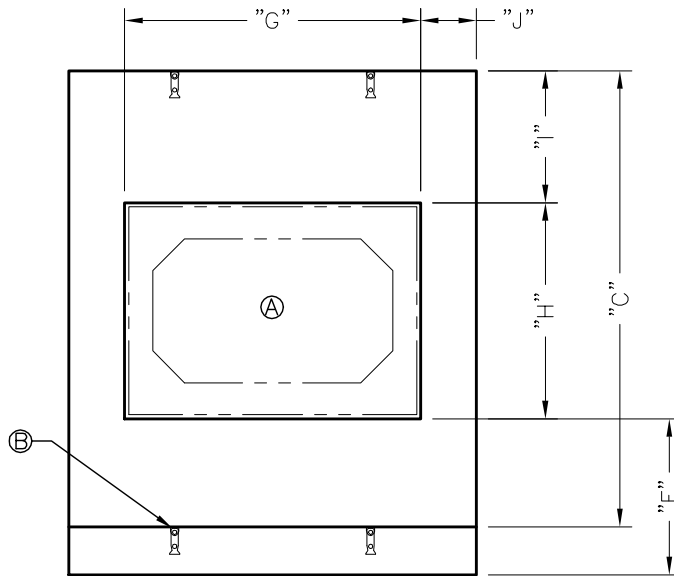
LTR	Dimension
A	
B	
C	
D	
E	
G	
H	
I	
J	
K	
L	

DESIGN NOTES:

1. Concrete: 28 Day Compressive Strength  $f'_c = 5,000$  psi. Type III.
2. Rebar: Grade 60 Per ASTM A615.
3. Design Loading: H-20 with 0' to 2'-0" Cover.
4. Tolerances: Per ASTM C850.
5. Any Hardware Shown but not Dimensioned is for Visual Reference Only. - Do not Scale for Placement.
6. Actual length of Culvert May Vary due to Manufacturing & Installation Tolerances.

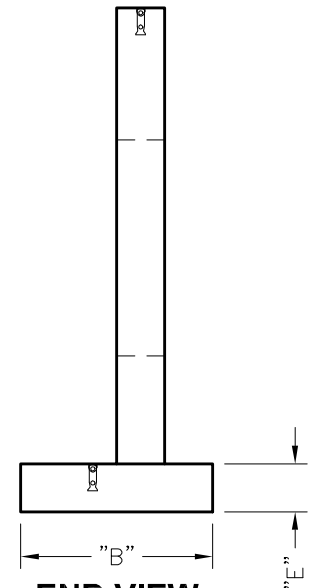
DATA CHART

LTR	QTY	Description
A		Opening As Required
B		Lifting Inserts As Required



**SIDE ELEVATION**

Typical



**END VIEW**

Typical



**CTR-DBH**

FILE NAME: 325DBH-CTR\_DET.DWG

ISSUE DATE: January, 2008

[www.oldcastleprecast.com](http://www.oldcastleprecast.com)

**Center Wall  
13,000 Lbs.**

Copyright © 2008 **Oldcastle** Precast