

PUMP CHAMBERS

FILE NAME: 324EPSPUMP_ISO.DWG

ISSUE DATE: January, 2008

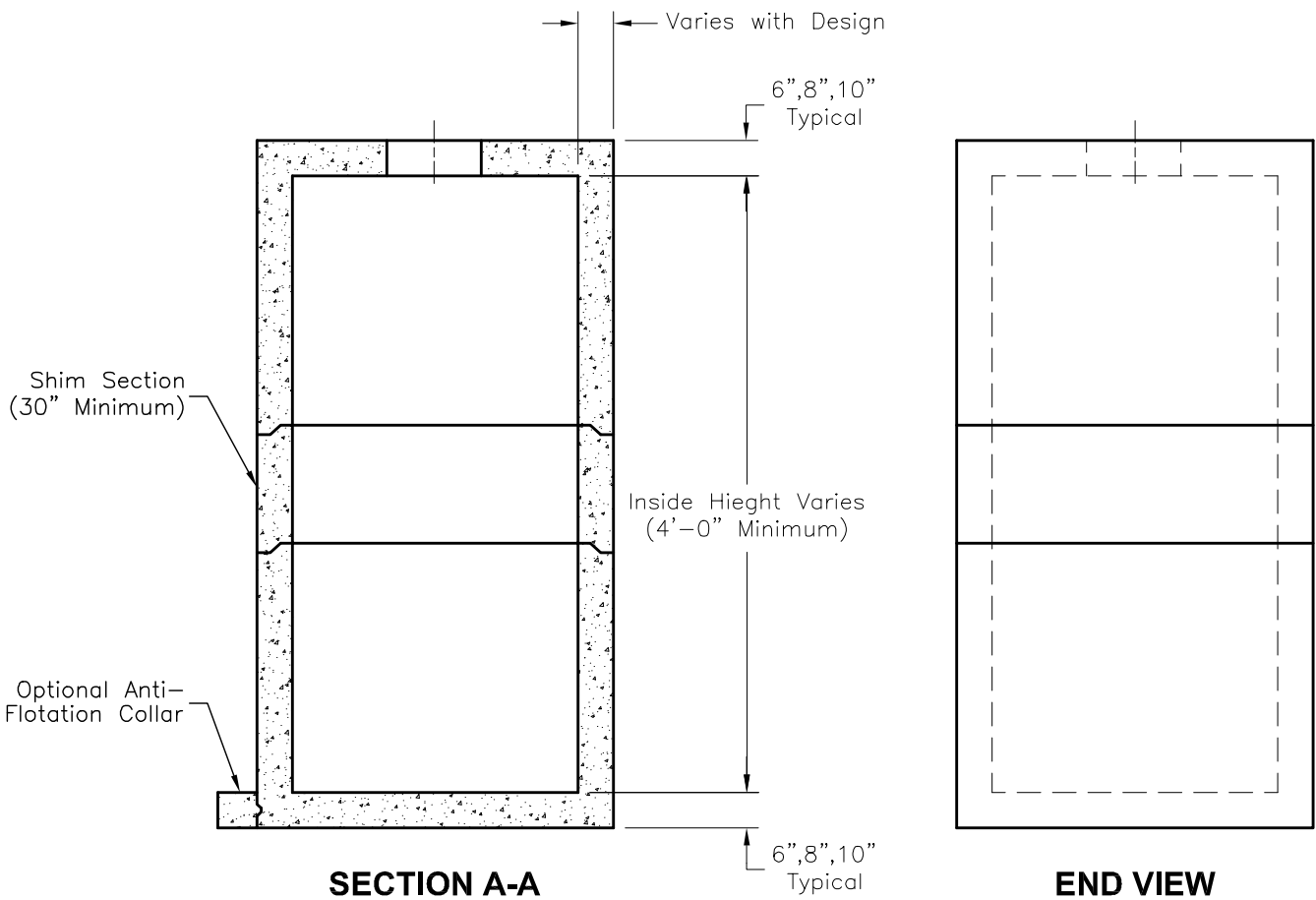
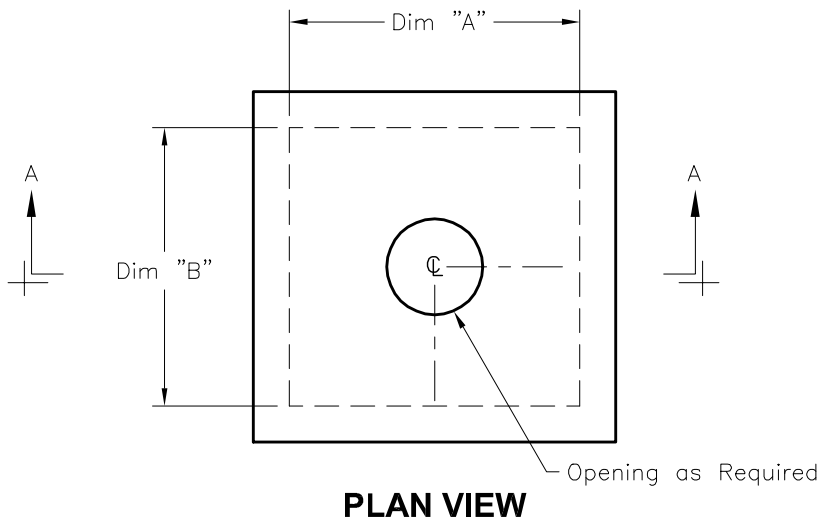
www.oldcastleprecast.com

**Dimensions Varies
Pump Chambers**

Copyright © 2008 **Oldcastle Precast**

GENERAL NOTES:

1. Concrete: 28 Day Compressive Strength $f'_c = 5,000$ psi
 2. Steel Reinforcement: ASTM A-615, Grade 60
 3. Cover to Steel-1" Minimum
 4. Vaults are Designed to Meet ASTM C858 and ACI 318 with AASHTO HS-20 Loading
 5. Earth Cover-0 to 5 Feet Max.
 6. Construction Joint Sealed with 1" Dia. Butyl Rubber or Equivalent
- * Possibility of Flotation in High Water Table Areas Should be Analyzed and the Appropriate Anti-Flotation Collars Added if Required



MODEL NO.	PC3x3	PC4x4	PC4x6	PC5x10	PC6x6	PC6x8	PC6x10	PC6x12	PC6x13	PC6x14	PC8x8	PC8x14	PC10x10
DIM "A"	3'-0"	4'-0"	6'-0"	10'-0"	6'-0"	8'-0"	10'-0"	12'-0"	13'-0"	14'-0"	8'-0"	8'-0"	10'-0"
DIM "B"	3'-0"	4'-0"	4'-0"	5'-0"	6'-0"	6'-0"	6'-0"	6'-0"	6'-0"	6'-0"	8'-0"	14'-0"	10'-0"
Max.Height	5'-0"	5'-0"	4'-0"	5'-0"	5'-0"	5'-0"	4'-0"	5'-0"	6'-0"	6'-0"	5'-0"	5'-0"	5'-0"



PUMP CHAMBERS

FILE NAME: 324EPSPUMP_DET.DWG

ISSUE DATE: January, 2008

www.oldcastleprecast.com

**Dimensions Varies
Pump Chambers**

Copyright © 2008 Oldcastle Precast