

Oldcastle Precast[®]

WW-DBW

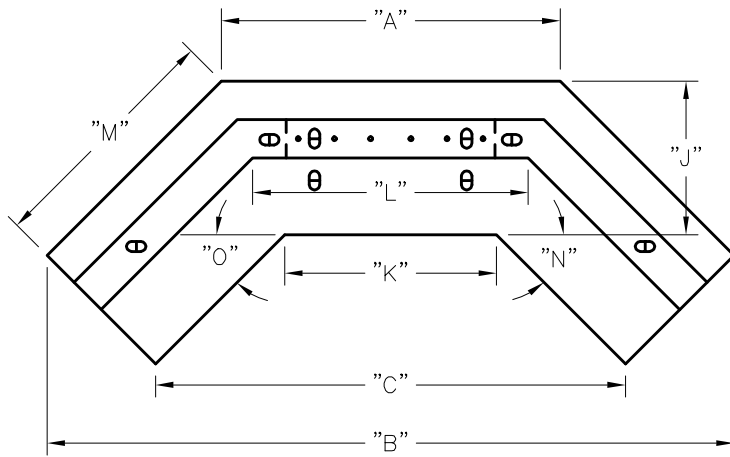
FILE NAME: 324DBWWW_ISO.DWG

ISSUE DATE: January, 2008

www.oldcastleprecast.com

**Wingwalls
Box Culvert**

Copyright © 2008 **Oldcastle Precast**[®]



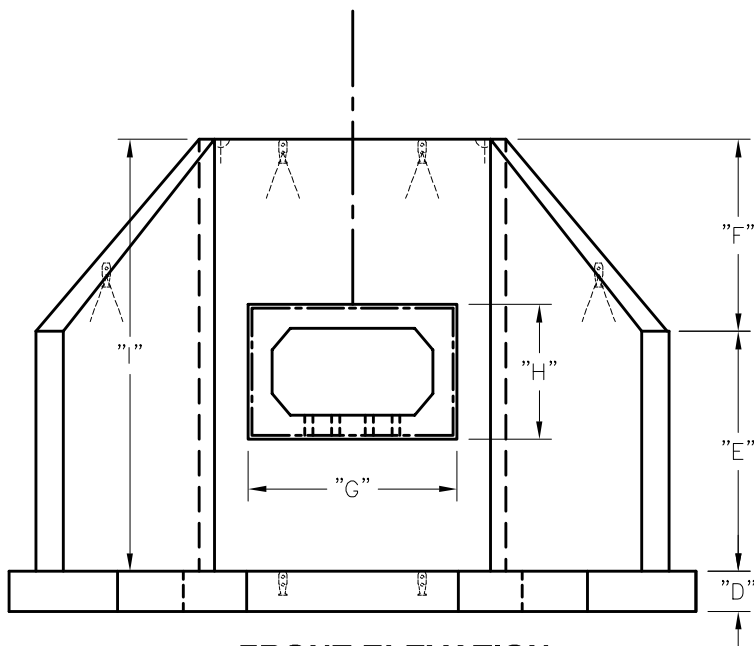
PLAN VIEW

LTR	DIMENSION
A	
B	
C	
D	
E	
F	
G	
H	
I	
J	
K	
L	
M	
N	
O	

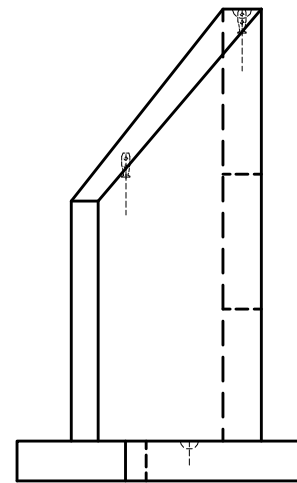
GENERAL NOTES

1. Concrete: 28 Day Compressive Strength $f'_c = 5,000$ psi.
2. Rebar: Grade 60 Per ASTM A615.
3. Design Loading: H-20 with 0' to 2'-0" Cover.
4. Joints to be Sealed with 1" SQ. Neoprene Cord in Shiplap Joint.
5. Tolerances: Per ASTM C 850.
6. Any Hardware Shown but not Dimensioned is for Visual Reference Only.—Do not Scale for Placement.
7. Actual Length of Culvert May Vary Due to Manufacturing & Installation Tolerances.

LTR	QTY	DESCRIPTION
A	6	Lifting Insert
B	2	4 1/2" ϕ LF Insert
C	1	2'-0" ϕ Access Hole
D	1	16" ϕ Hole (Ref. 12" ϕ Pipe)
E	5	2" ϕ Sleeve
F	7	Lifting Insert
G	4	2" ϕ x 8" Sleeve



FRONT ELEVATION



SIDE ELEVATION



WW-DBW

FILE NAME: 324DBWWW_DET.DWG

ISSUE DATE: January, 2008

www.oldcastleprecast.com

**Wingwalls
Box Culvert**

Copyright © 2008 **Oldcastle Precast**