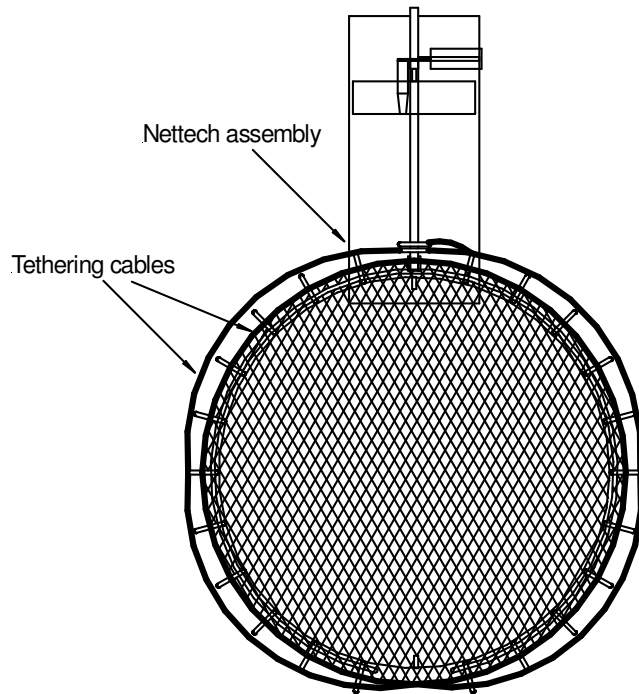


**END VIEW**



**NOTES:**

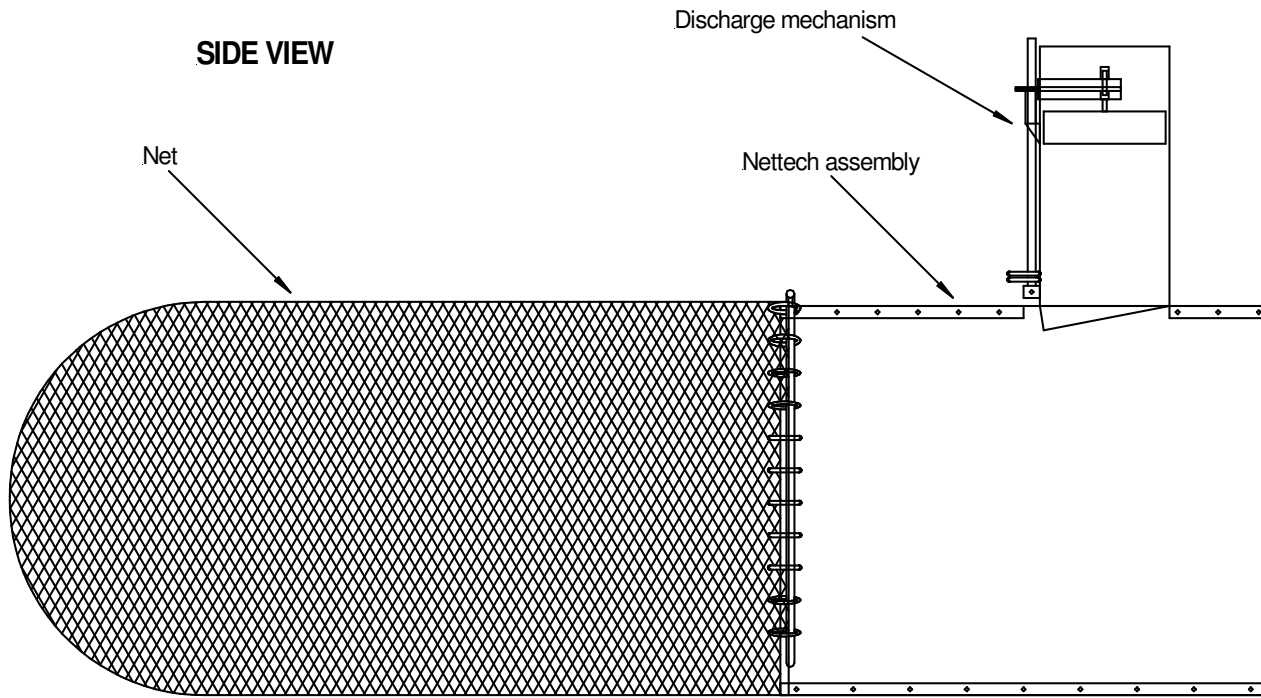
1. Nettech gross pollutant interceptor is available in sizes to fit most industry-standard circular culverts (see specifications). Rectangular culverts may be accommodated on a custom basis. Nets are also available in a range of mesh sizes and lengths.
2. Nettech shall have a mechanism to allow it to discharge its net when full of debris, tethering the captured litter for retrieval while preventing backup of the stormwater system.
3. Nettech assembly shall be constructed from stainless steel (Type 304) with UV-resistant nylon netting.
4. Allow a minimum of 10 feet of clearance from the outfall for proper Nettech function.

**NETTECH**

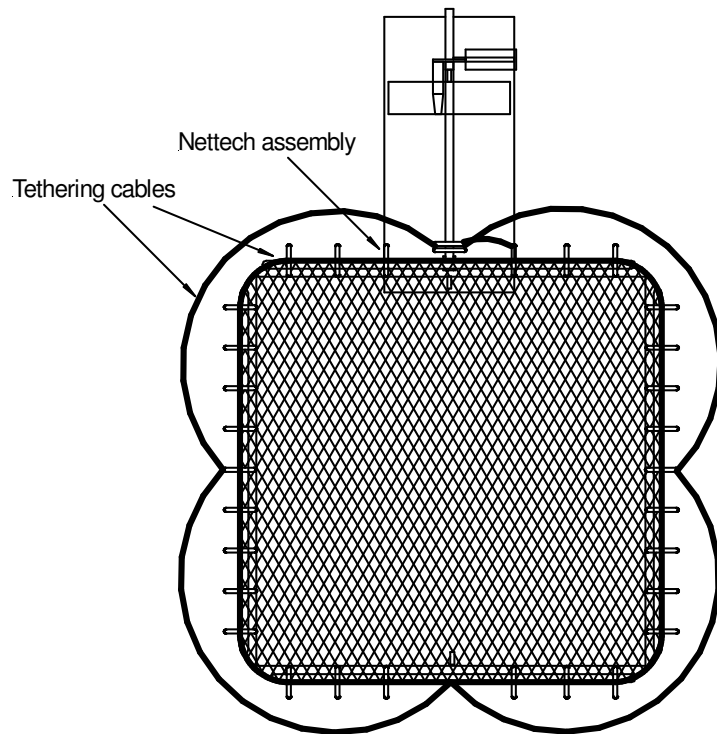
**GROSS POLLUTANT INTERCEPTOR  
(Circular Structure)**

KriStar Enterprises, Inc., Santa Rosa, CA (800) 579-8819

06/04



**END VIEW**



**NOTES:**

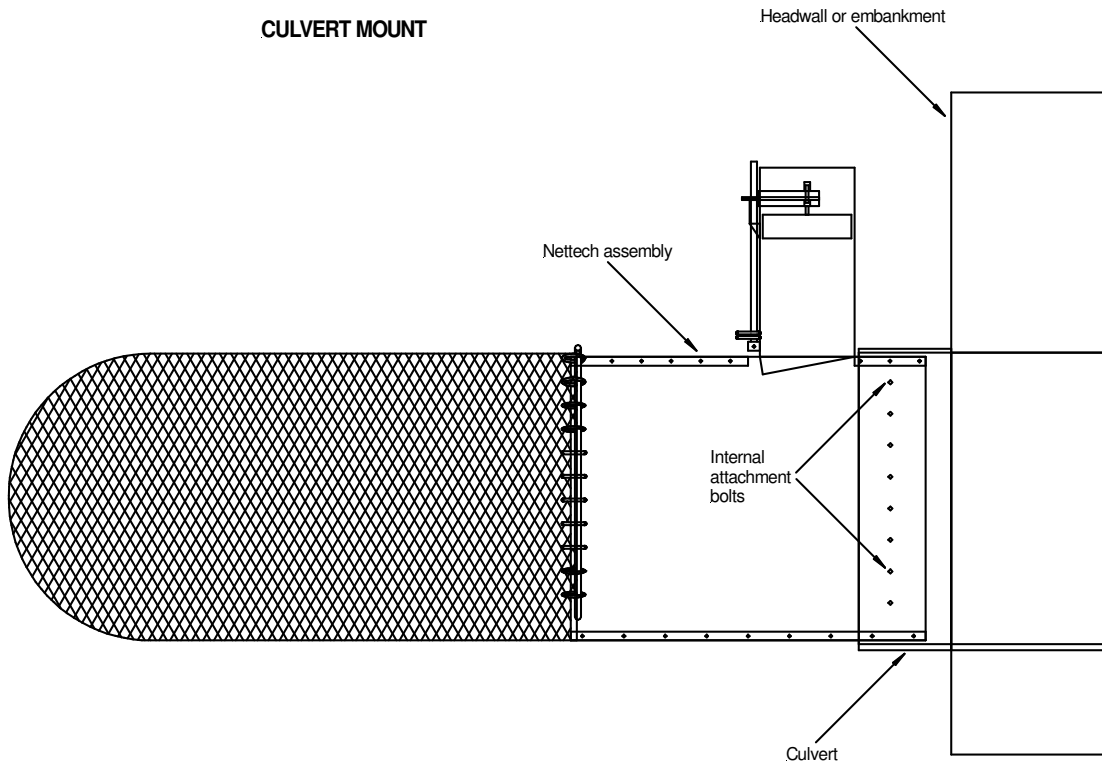
1. Nettech gross pollutant interceptor is available in sizes to fit most industry-standard circular culverts (see specifications). Rectangular culverts may be accommodated on a custom basis. Nets are also available in a range of mesh sizes and lengths.
2. Nettech shall have a mechanism to allow it to discharge its net when full of debris, tethering the captured litter for retrieval while preventing backup of the stormwater system.
3. Nettech assembly shall be constructed from stainless steel (Type 304) with UV-resistant nylon netting.
4. Allow a minimum of 10 feet of clearance from the outfall for proper Nettech function.

**NETTECH**

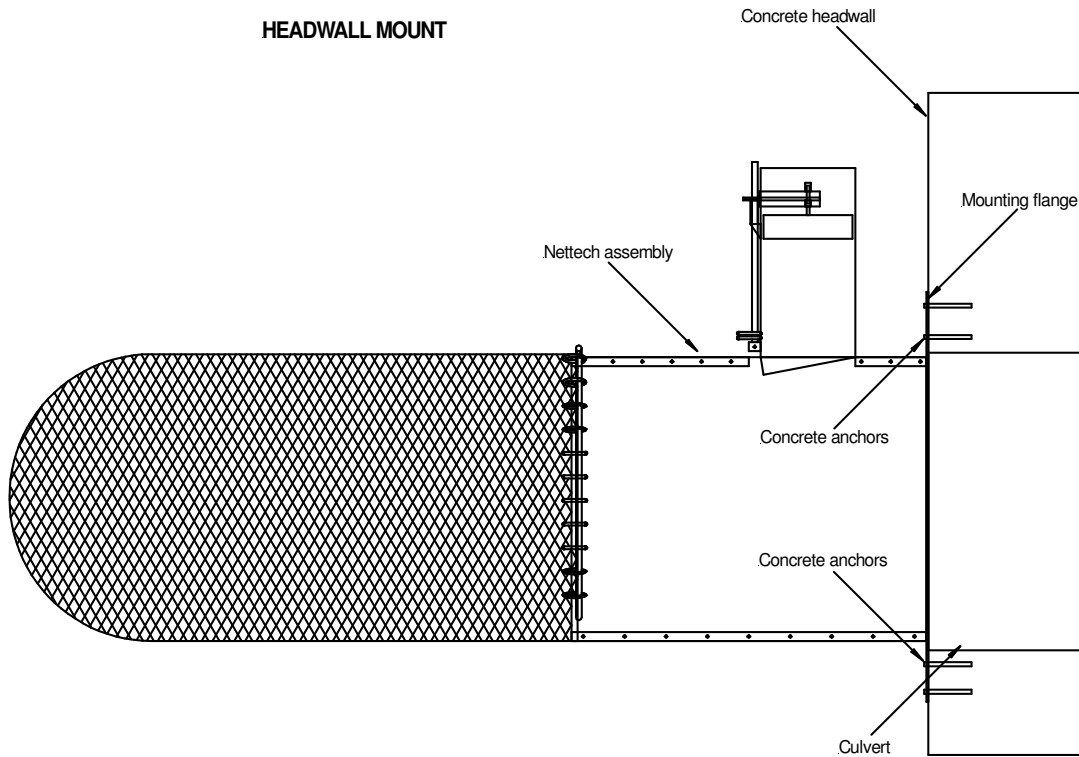
**GROSS POLLUTANT INTERCEPTOR  
(Rectangular Structure)**

KriStar Enterprises, Inc., Santa Rosa, CA (800) 579-8819

### CULVERT MOUNT



### HEADWALL MOUNT



#### NOTES:

1. Nettech gross pollutant interceptor is available in sizes to fit most industry-standard circular culverts (see specifications). Rectangular culverts may be accommodated on a custom basis. Nets are also available in a range of mesh sizes and lengths.
2. Nettech shall have a mechanism to allow it to discharge its net when full of debris, tethering the captured litter for retrieval while preventing backup of the stormwater system.
3. Nettech assembly shall be constructed from stainless steel (Type 304) with UV-resistant nylon netting.
4. Allow a minimum of 10 feet of clearance from the outfall for proper Nettech function.

**NETTECH**

**GROSS POLLUTANT INTERCEPTOR  
(Mounting Options)**

KriStar Enterprises, Inc., Santa Rosa, CA (800) 579-8819

06/04