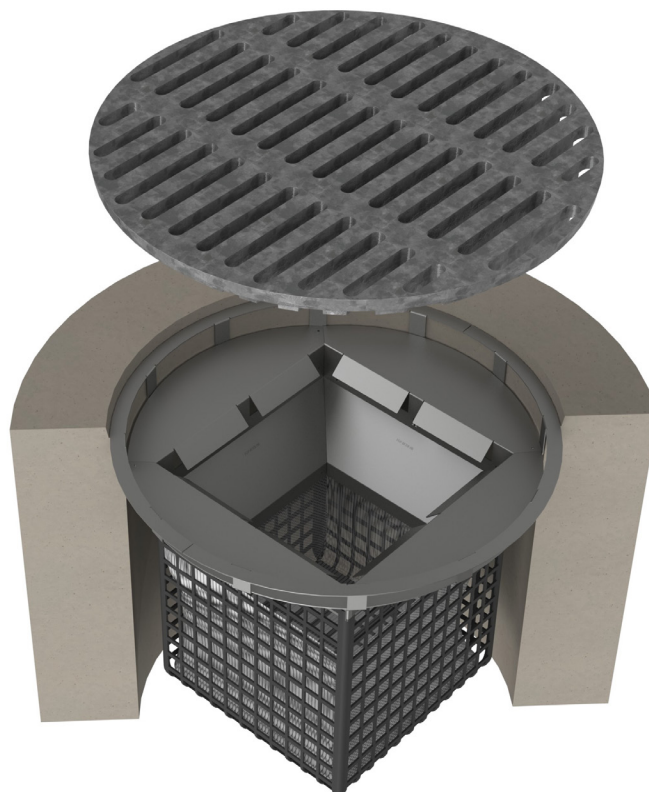


# FLOGARD® CATCH BASIN INSERT FILTER

---

## SUBMITTAL PACKAGE

---



---

# TABLE OF CONTENTS

---

1 - FEATURES & BENEFITS

2 - ACCESSORIES

3 - PRODUCT SPECIFICATIONS

---

# SECTION 1

---

## FEATURES & BENEFITS

# FLOGARD® CATCH BASIN INSERT FILTER

*Removes Pollutants from Runoff Prior to Entering Waterways*

## Efficient System

Catches pollutants where they are easiest to catch, at the inlet.

## Variable Design

Able to be retrofitted or used in new projects.

## Treatment Train

Can be incorporated as part of a "Treatment Train".

## No Standing Water

Helps to minimize bacteria and odor problems.

## Focused Treatment

Removes petroleum hydrocarbons, trash and Total Suspended Solids (TSS).

## Maximum Flexibility

Available in a variety of standard sizes to fit round and square inlets.

## Economical

Earn a higher return on system investment.

*Two-part stainless-steel insert to filter solids and oils/grease*



*Easy to install, inspect and maintain, even on small and confined sites*

## By the Numbers\*:

Filter will remove up to 80% of Total Suspended Solids (TSS), at least 70% of oils and grease and 40% of Total Phosphorus (TP) associated with organic debris as well as Polycyclic Aromatic Hydrocarbons (PAH) from oil leaks and spills.

*\*Approx. for urban street application*

## Catch Basin Filter Test Results Summary

Testing Agency	% TSS Removal	% Oil & Grease Removal	% PAH Removal
UCLA	80	70 to 80	
U of Auckland			
Tonking & Taylor, Ltd. (for City of Auckland)	78 to 95		
U of Hawaii (for City of Honolulu)	80		20 to 40



Call us today **(800) 579-8819** or visit our website for detailed product information, drawings and design tools at [www.oldcastlestormwater.com](http://www.oldcastlestormwater.com)

## Multi-Purpose Catch Basin Insert Retains Sediment, Debris, Trash and Oils/Grease

FloGard® Catch Basin Insert Filters are recommended for areas subject to silt and debris as well as low-to-moderate levels of petroleum hydrocarbons (oils and grease). Examples of such areas include vehicle parking lots, aircraft ramps, truck and bus storage yards, business parks, residential and public streets.

### Catch Basin Filter Competitive Feature Comparison

Evaluation of Catch Basin Filters (Based on flow-comparable units) (Scale 1-10)	Oldcastle Stormwater	Other Insert Filter Types**
Flow Rate	10	7
Removal Efficiency*	80%	45%
Capacity - Sludge & Oil	7	7
Service Life	10	3
Installation - Ease of Handling / Installation	8	6
Ease of Inspections & Maintenance	7	7
Value	10	2

\*approximate, based on field sediment removal testing in urban street application

\*\*average

Long-Term Value Comparison (Based on flow-comparable units) (Scale 1-10)	Oldcastle Stormwater	Other Insert Filter Types
Unit Value - Initial (\$/cfs treated)	10	4
Installation Value (\$/cfs treated)	10	7
Absorbent Replacement (annual avg (\$/cfs treated))	10	2
Materials Replacement Value (annual avg (\$/cfs treated))	10	10
Maintenance Value (annual avg (\$/cfs treated))	10	7
Total First Year ROI (\$/cfs treated)	10	5
Total Annual Avg Value (\$/cfs treated, avg over 20 yrs)*	10	5



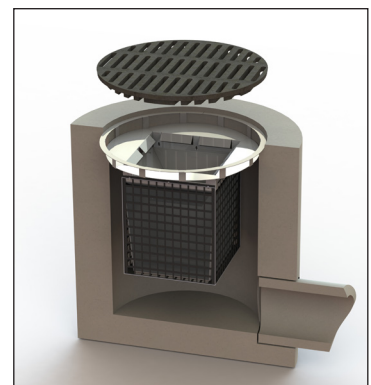
Combination Inlet



Flat-Grated Inlet



Captured debris from FloGard Catch Basin Insert Filter in Dana Point, California



Circular Frame Catch Basin

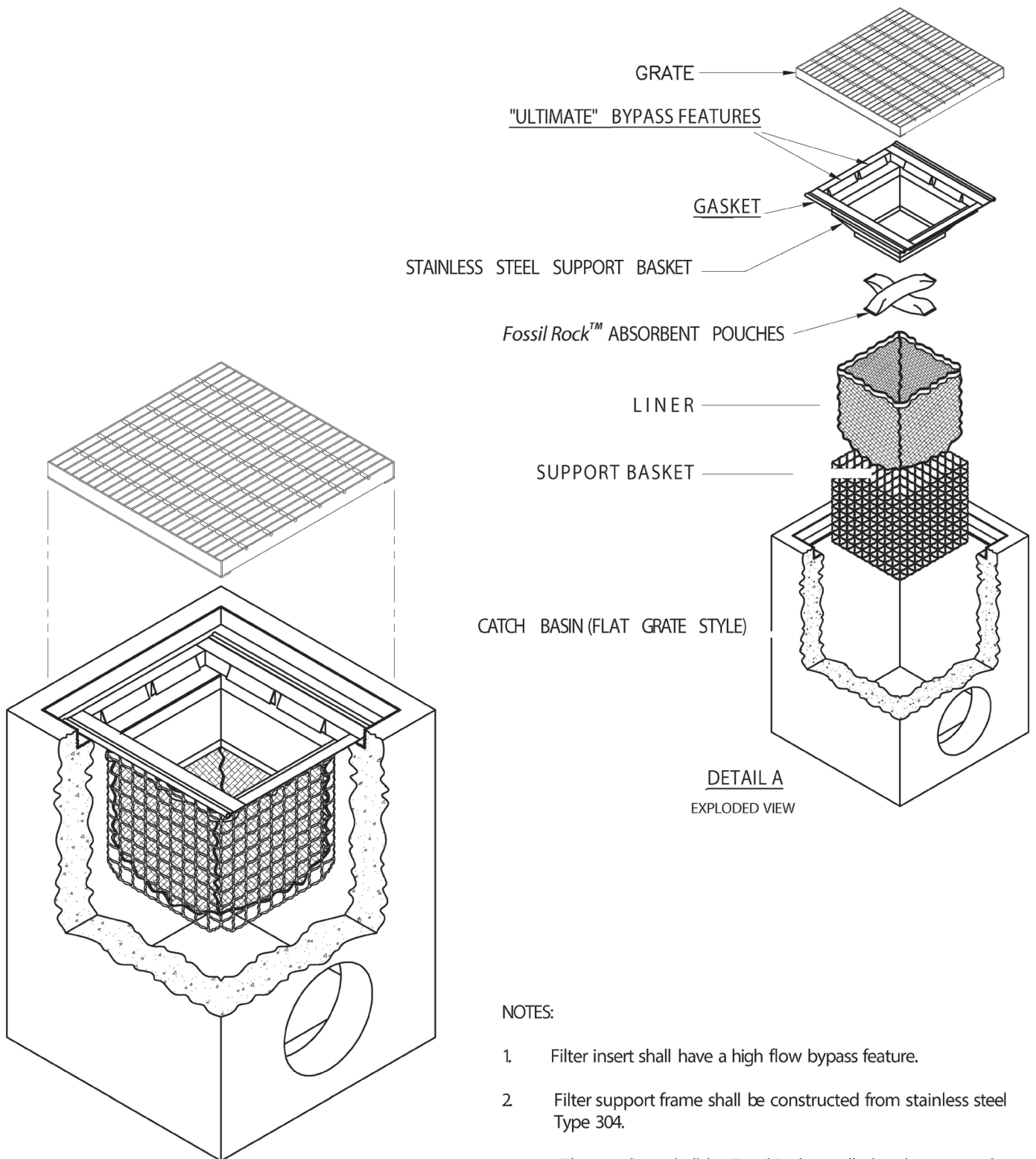
---

## SECTION 2

---

### ACCESSORIES





**FloGard® FILTER**  
-INSTALLED INTO CATCH BASIN-

NOTES:

1. Filter insert shall have a high flow bypass feature.
2. Filter support frame shall be constructed from stainless steel Type 304.
3. Filter medium shall be *Fossil Rock* installed and maintained in accordance with manufacturer specifications.
4. Storage capacity reflects 80% of maximum solids collection prior to impeding filtering bypass.

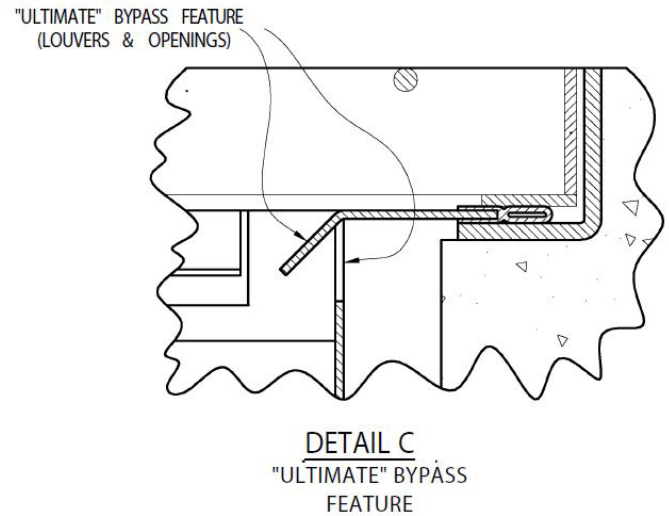
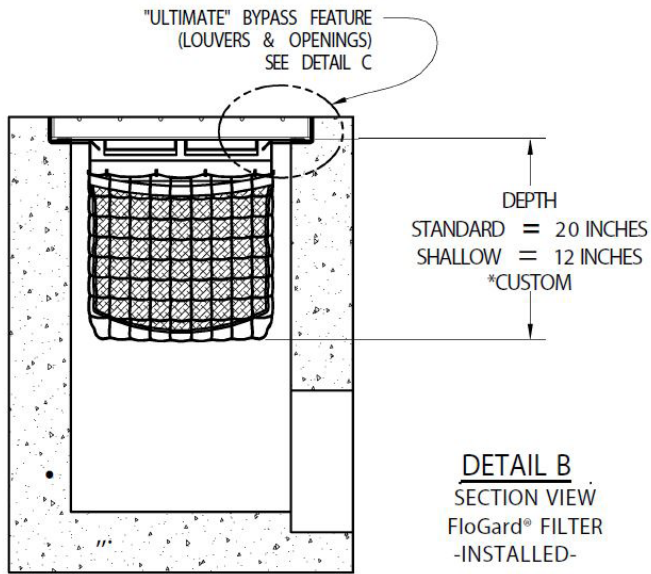
---

# SECTION 3

---

## PRODUCT SPECIFICATIONS





\* **MANY** OTHER STANDARD & CUSTOM SIZES AND DEPTHS AVAILABLE UPON REQUEST.

FloGard Flat Grated Inlet								
SPECIFIER CHART								
MODEL NO.  STANDARD DEPTH	STANDARD & SHALLOW DEPTH (Data in these columns is the same for both STANDARD & SHALLOW versions)			STANDARD DEPTH -20 Inches-		MODEL NO.  SHALLOW DEPTH	SHALLOW DEPTH -12 Inches-	
	INLET ID Inside Dimension (inch x inch)	GRADE OD Outside Dimension (inch x inch)	TOTAL BYPASS CAPACITY (cu. ft. / sec.)	SOLIDS STORAGE CAPACITY (cu. ft.)	FILTERED FLOW (cu. ft. / sec.)		SOLIDS STORAGE CAPACITY (cu. ft.)	FILTERED FLOW (cu. ft. / sec.)
FGP-12F	12 X 12	12 X 14	2.8	0.3	0.4	FGP-12F8	.15	.25
FGP-16F	16 X 16	16 X 19	4.7	0.8	0.7	FGP-16F8	.45	.4
FGP-18F	18 X 18	18 X 20	4.7	0.8	0.7	FGP-18F8	.45	.4
FGP-1836F	18 X 36	18 X 40	6.9	2.3	1.6	FGP-1836F8	1.3	.9
FGP-21F	22 X 22	22 X 24	6.1	2.2	1.5	FGP-21F8	1.25	.85
FGP-24F	24 X 24	24 X 27	6.1	2.2	1.5	FGP-24F8	1.25	.85
FGP-2436F	24 X 36	24 X 40	8.0	3.4	2.0	FGP-2436F8	1.95	1.15
FGP-2448F	24 X 48	24 X 48	9.3	4.4	2.4	FGP-2448F8	2.5	1.35
FGP-32F-TN	28 X 28	32 X 32	6.3	2.2	1.5	FGP-32F8-TN	1.25	.85
FGP-30F	30 X 30	30 X 34	8.1	3.6	2.0	FGP-30F8	2.05	1.15
FGP-36F	36 X 36	36 X 40	9.1	4.6	2.4	FGP-36F8	2.65	1.35
FGP-3648F	36 X 48	40 X 48	11.5	6.8	3.2	FGP-3648F8	3.9	1.85
FGP-48F	48 X 48	48 X 54	13.2	9.5	3.9	FGP-48F8	5.45	2.25
FGP-1633F	16 X 34	18 X 36	6.9	2.3	1.6	FGP-1633F8	1.3	.9
FGP-2234F	22 X 34	24 X 36	8.0	3.4	2.0	FGP-2234F8	1.95	1.15



**Oldcastle®**

# Measurement Chart for FloGard Inserts (Square/Rectangular Flat Grated Inlets)

**THE FOLLOWING MEASUREMENTS ARE REQUIRED TO PLACE AN ORDER**

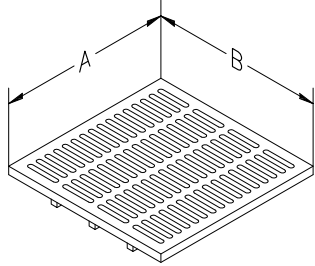
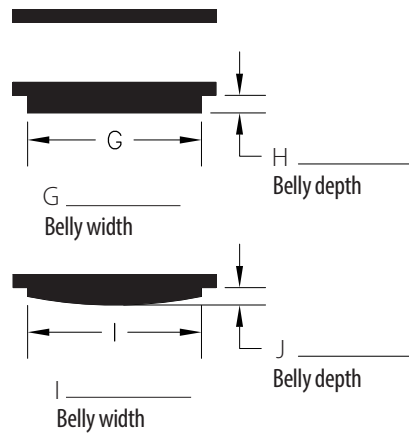
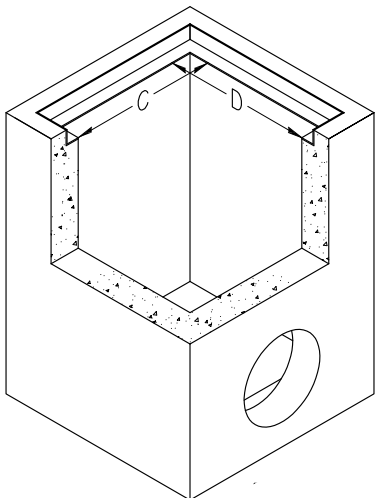
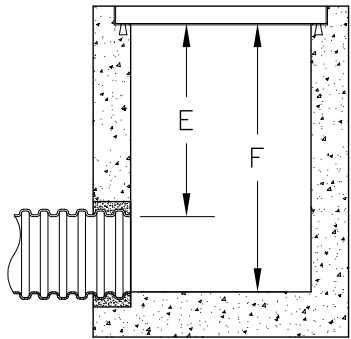
## CONTACT INFORMATION

CONTACT DETAILS	Company:	
	Job Name:	
	Job Address:	City/State/Zip:
	Contact Name:	
	Email:	Phone:

## INLET, FRAME & GRATE INFORMATION

TYPE	Inlet Type (e.g. PA Type M):	Grate MFG/Model (e.g. Neenah R-2060):
	Frame Model #:	Grate Type (Check One): <input type="checkbox"/> Cast Iron <input type="checkbox"/> Steel

**PLEASE PROVIDE MEASUREMENTS WITHIN 1/8" TO GUARANTEE ACCURATE INSTALLATION\***

<p><b>Grate</b></p> <p>A _____ Grate outside dimensions</p> <p>B _____ Grate outside dimensions</p> 		<p><b>Grate type (pick one):</b></p> <p>Flat <input type="checkbox"/></p> <p>Square belly <input type="checkbox"/></p> <p>Round belly <input type="checkbox"/></p>		<p><b>Grate section</b></p> 	
<p><b>Catch Basin</b></p> <p>C _____ Frame clear opening or wall to wall inside the catch basin, whichever is less</p> <p>D _____ Frame clear opening or wall to wall inside the catch basin, whichever is less</p> 		<p><b>Section through Catch Basin</b></p>  <p>E _____ Bottom of frame to top of outlet pipe</p> <p>F _____ Bottom of frame to floor of catch basin</p>			
<p><b>Inlet Pipes?</b></p> <p>Do you have inlet pipes? Y <input type="checkbox"/> N <input type="checkbox"/> If yes, bottom of grate to top of pipe _____ Pipe inside diameter _____ Need to be filtered? Y <input type="checkbox"/> N <input type="checkbox"/></p>					

**Notes:** If any obstructions or protrusions exist within the catch basin, please provide photos and accurate measurements to ensure proper installation. Submittal of this form represents that the customer acknowledges that all details provided are accurate, and that any issues resulting from inaccurate information herein are the responsibility of said customer. \* Use second page for additional catch basins.

Please email completed forms to [contactstormwater@oldcastle.com](mailto:contactstormwater@oldcastle.com)

[www.oldcastlestormwater.com](http://www.oldcastlestormwater.com)

Phone: (800) 579-8819



# Measurement Chart for FloGard Inserts (Square/Rectangular Flat Grated Inlets)

THE FOLLOWING MEASUREMENTS ARE REQUIRED TO PLACE AN ORDER

## PLEASE PROVIDE MEASUREMENTS WITHIN 1/8" TO GUARANTEE ACCURATE INSTALLATION

A - Grate outside dimensions

B - Grate outside dimensions

C - Frame clear opening or wall to wall inside the catch basin, whichever is less

D - Frame clear opening or wall to wall inside the catch basin, whichever is less

E - Measure from bottom of frame to top of outlet pipe

F - Bottom of frame to floor of catch basin

\* If grate has "belly" please include measurements for G & H or I & J, depending on belly style.

Quantity/ Drain #	Grate outside dimensions		Frame clear opening or wall to wall inside the catch basin		Bottom of frame to top of pipe	Bottom of frame to floor of catch basin	Square belly grate		Round belly grate	
							Square belly width	Square belly depth	Round belly width	Round belly depth
	A	B	C	D	E	F	G	H	I	J

### NOTES:

**Notes:** If any obstructions or protrusions exist within the catch basin, please provide photos and accurate measurements to ensure proper installation. Submittal of this form represents that the customer acknowledges that all details provided are accurate, and that any issues resulting from inaccurate information herein are the responsibility of said customer.

Please email completed forms to [contactstormwater@oldcastle.com](mailto:contactstormwater@oldcastle.com)

[www.oldcastlestormwater.com](http://www.oldcastlestormwater.com)

Phone: (800) 579-8819

# FLOGARD® CATCH BASIN INSERT FILTER

## OUR MARKETS



BUILDING  
STRUCTURES



COMMUNICATIONS



WATER



ENERGY



TRANSPORTATION