

# FLOGARD<sup>®</sup> CATCH BASIN INSERT FILTER

*Removes Pollutants from Runoff Prior to Entering Waterways*

## Efficient System

Catches pollutants where they are easiest to catch, at the inlet.

*Two-part stainless-steel insert to filter solids and oils/grease*

## Variable Design

Able to be retrofitted or used in new projects.

## Treatment Train

Can be incorporated as part of a "Treatment Train".

## No Standing Water

Helps to minimize bacteria and odor problems.

## Focused Treatment

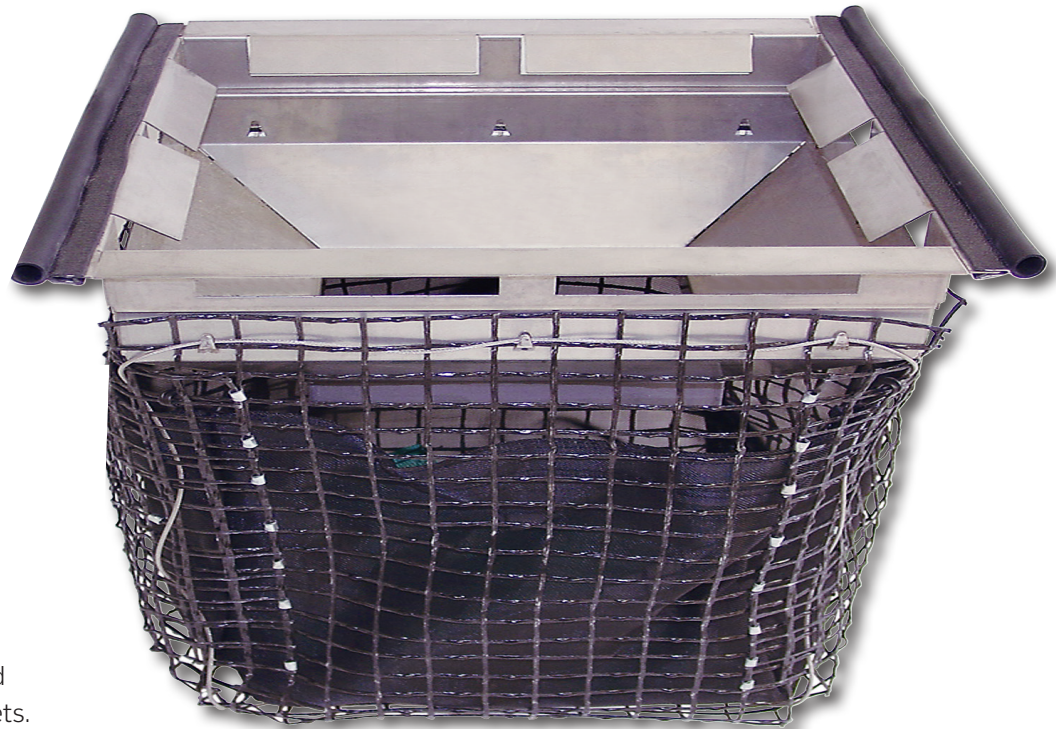
Removes petroleum hydrocarbons, trash and Total Suspended Solids (TSS).

## Maximum Flexibility

Available in a variety of standard sizes to fit round and square inlets.

## Economical

Earn a higher return on system investment.



*Easy to install, inspect and maintain, even on small and confined sites*

## By the Numbers\*:

Filter will remove up to 80% of Total Suspended Solids (TSS), at least 70% of oils and grease, and up to 40% of Total Phosphorus (TP) associated with organic debris as well as Polycyclic Aromatic Hydrocarbons (PAH) from oil leaks and spills.

*\*Approx. for urban street application*

## Catch Basin Filter Test Results Summary

Testing Agency	% TSS Removal	% Oil & Grease Removal	% PAH Removal
UCLA	80	70 to 80	
U of Auckland Tonking & Taylor, Ltd. (for City of Auckland)	78 to 95		
U of Hawaii (for City of Honolulu)	80		20 to 40



Call us today **(800) 579-8819** or visit our website for detailed product information, drawings and design tools at [www.oldcastlestormwater.com](http://www.oldcastlestormwater.com)

## Multi-Purpose Catch Basin Insert Retains Sediment, Debris, Trash and Oils/Grease

FloGard® Catch Basin Insert Filters are recommended for areas subject to silt and debris as well as low-to-moderate levels of petroleum hydrocarbons (oils and grease). Examples of such areas include vehicle parking lots, aircraft ramps, truck and bus storage yards, business parks, residential and public streets.

### Catch Basin Filter Competitive Feature Comparison

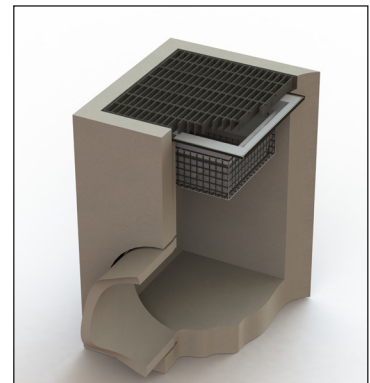
Evaluation of Catch Basin Filters (Based on flow-comparable units) (Scale 1-10)	Oldcastle Stormwater	Other Insert Filter Types**
Flow Rate	10	7
Removal Efficiency*	80%	45%
Capacity - Sludge & Oil	7	7
Service Life	10	3
Installation - Ease of Handling / Installation	8	6
Ease of Inspections & Maintenance	7	7
Value	10	2

\*approximate, based on field sediment removal testing in urban street application      \*\*average

Long-Term Value Comparison (Based on flow-comparable units) (Scale 1-10)	Oldcastle Stormwater	Other Insert Filter Types
Unit Value - Initial (\$/cfs treated)	10	4
Installation Value (\$/cfs treated)	10	7
Absorbent Replacement (annual avg (\$/cfs treated))	10	2
Materials Replacement Value (annual avg (\$/cfs treated))	10	10
Maintenance Value (annual avg (\$/cfs treated))	10	7
Total First Year ROI (\$/cfs treated)	10	5
Total Annual Avg Value (\$/cfs treated, avg over 20 yrs)*	10	5



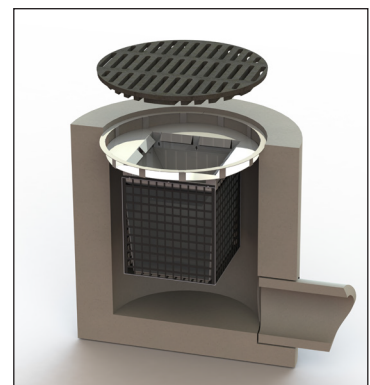
Combination Inlet



Flat-Grated Inlet



Captured debris from FloGard Catch Basin Insert Filter in Dana Point, California



Circular Frame Catch Basin